

98 Sawmill Road

SUBMITTED BY

Ray White Rockhampton Casey
stockers@cqoz.com

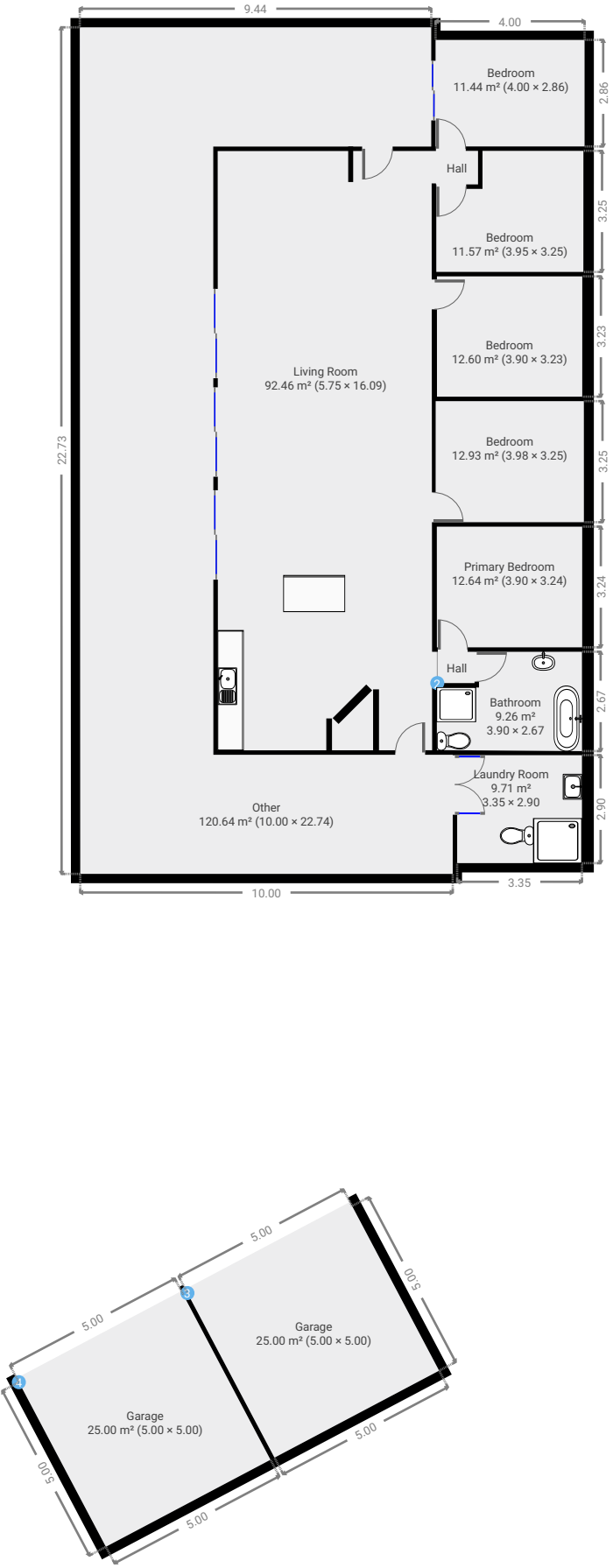
CREATED ON

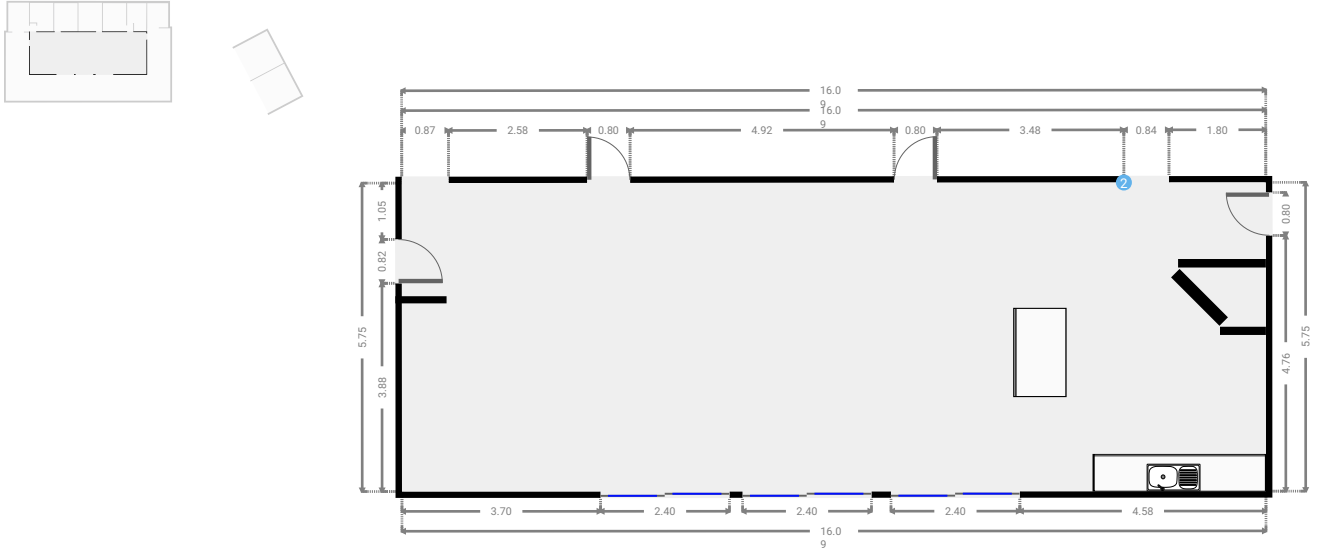
2022-03-23

Floors

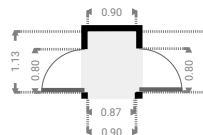
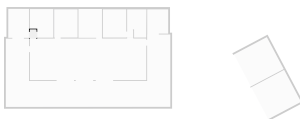
1

▼ Ground Floor



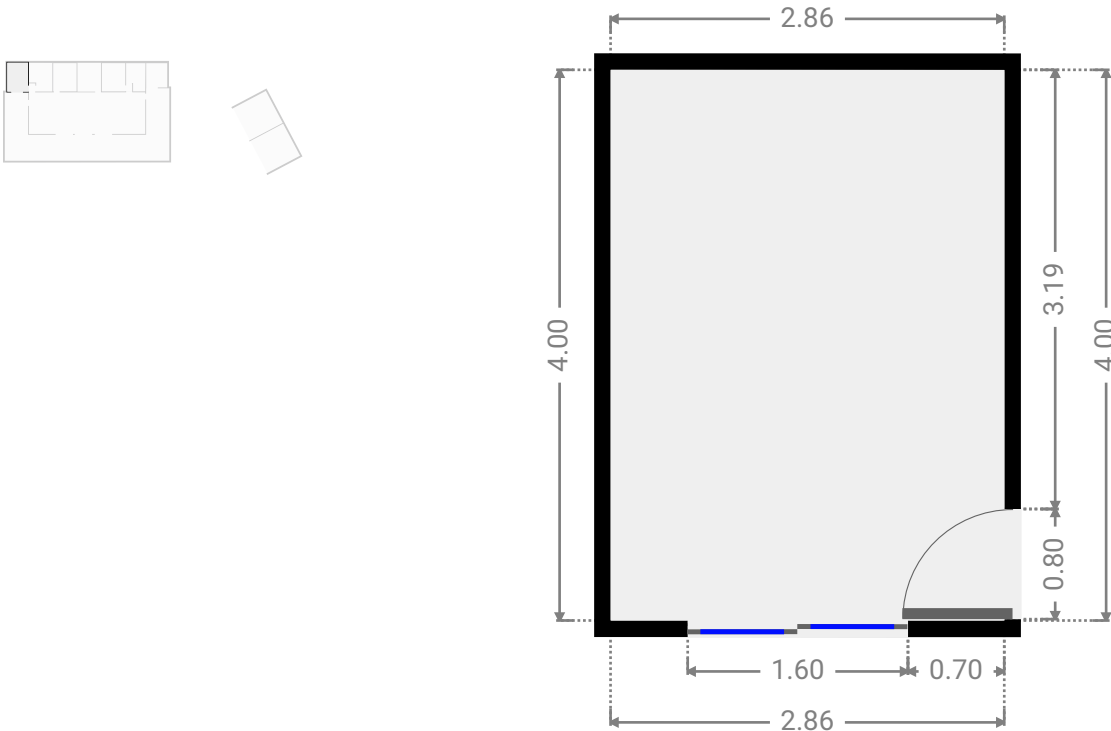


WIDTH: 0.90 m • LENGTH: 1.13 m
AREA: 1.02 m² • PERIMETER: 4.06 m



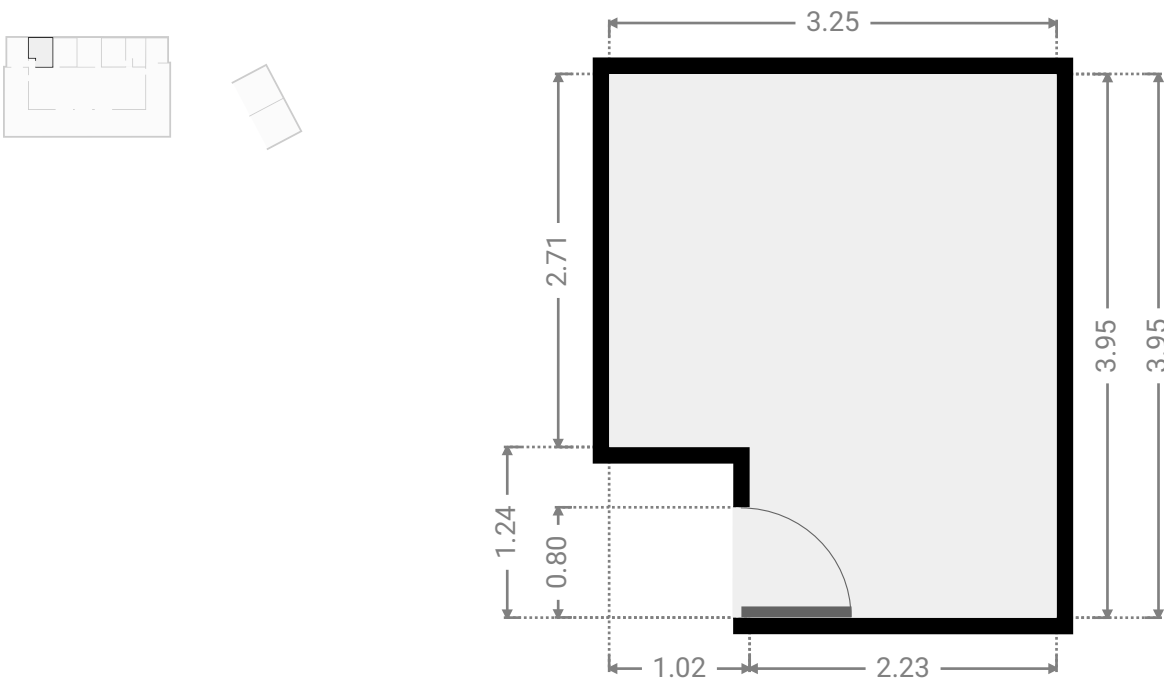
▼ **Bedroom**
Ground Floor

WIDTH: 2.86 m • LENGTH: 4.00 m
AREA: 11.44 m² • PERIMETER: 13.72 m



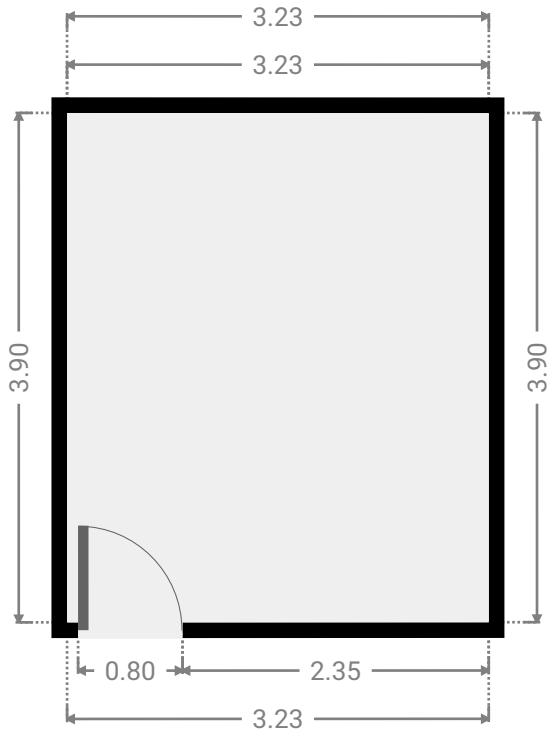
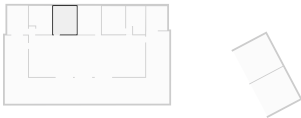
▼ **Bedroom**
Ground Floor

WIDTH: 3.25 m • LENGTH: 3.95 m
AREA: 11.57 m² • PERIMETER: 14.40 m



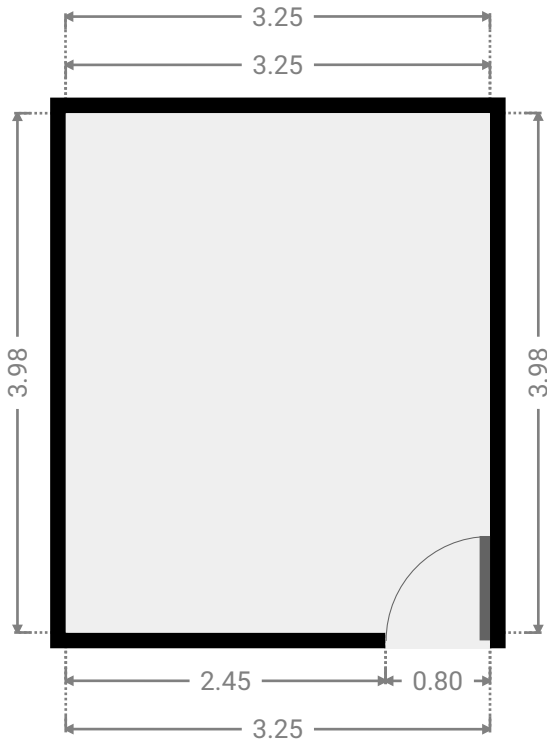
▼ **Bedroom**
Ground Floor

WIDTH: 3.23 m • LENGTH: 3.90 m
AREA: 12.60 m² • PERIMETER: 14.26 m



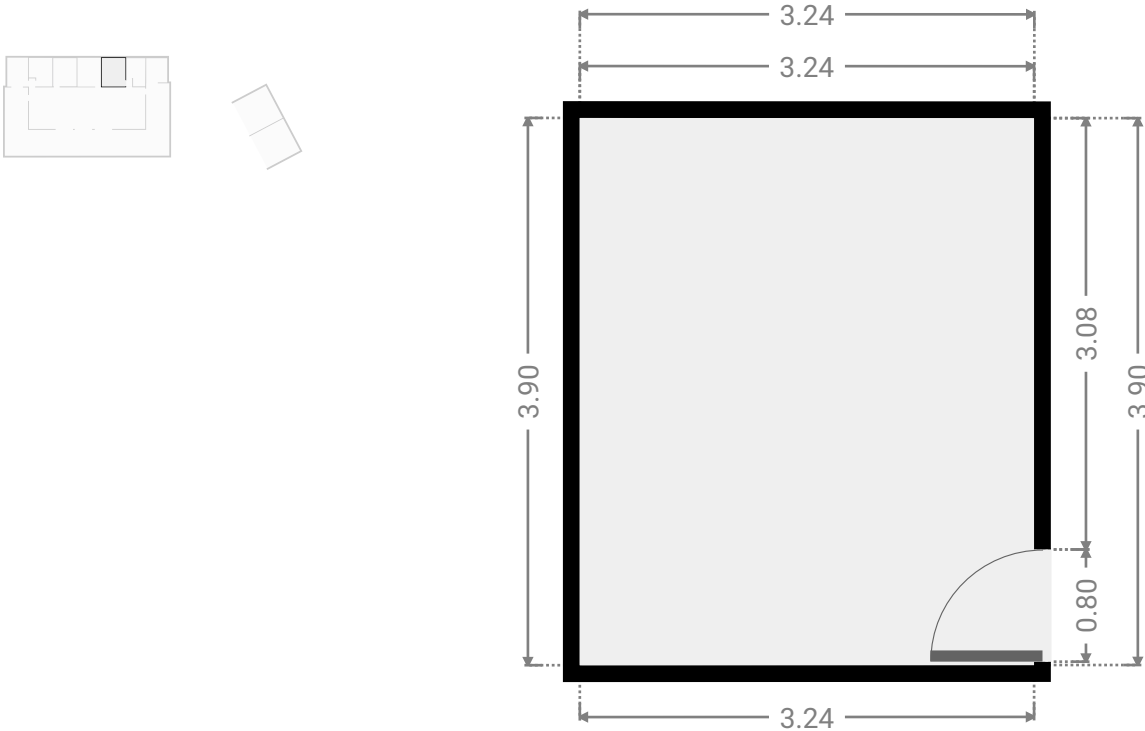
▼ **Bedroom**
Ground Floor

WIDTH: 3.25 m • LENGTH: 3.98 m
AREA: 12.93 m² • PERIMETER: 14.46 m



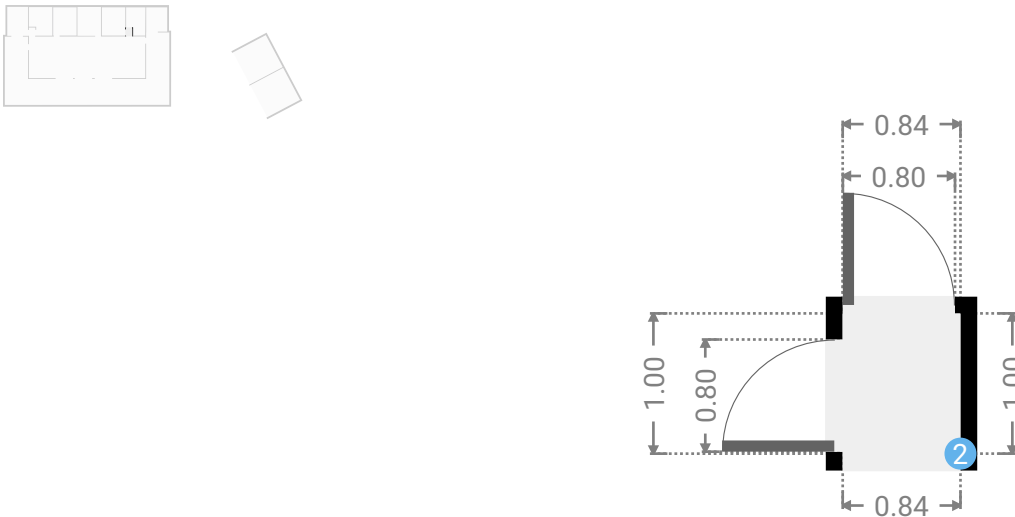
▼ **Primary Bedroom**
Ground Floor

WIDTH: 3.24 m • LENGTH: 3.90 m
AREA: 12.64 m² • PERIMETER: 14.28 m



▼ **Hall**
Ground Floor

WIDTH: 0.84 m • LENGTH: 1.00 m
AREA: 0.84 m² • PERIMETER: 3.68 m



▼ Hall/Ground Floor

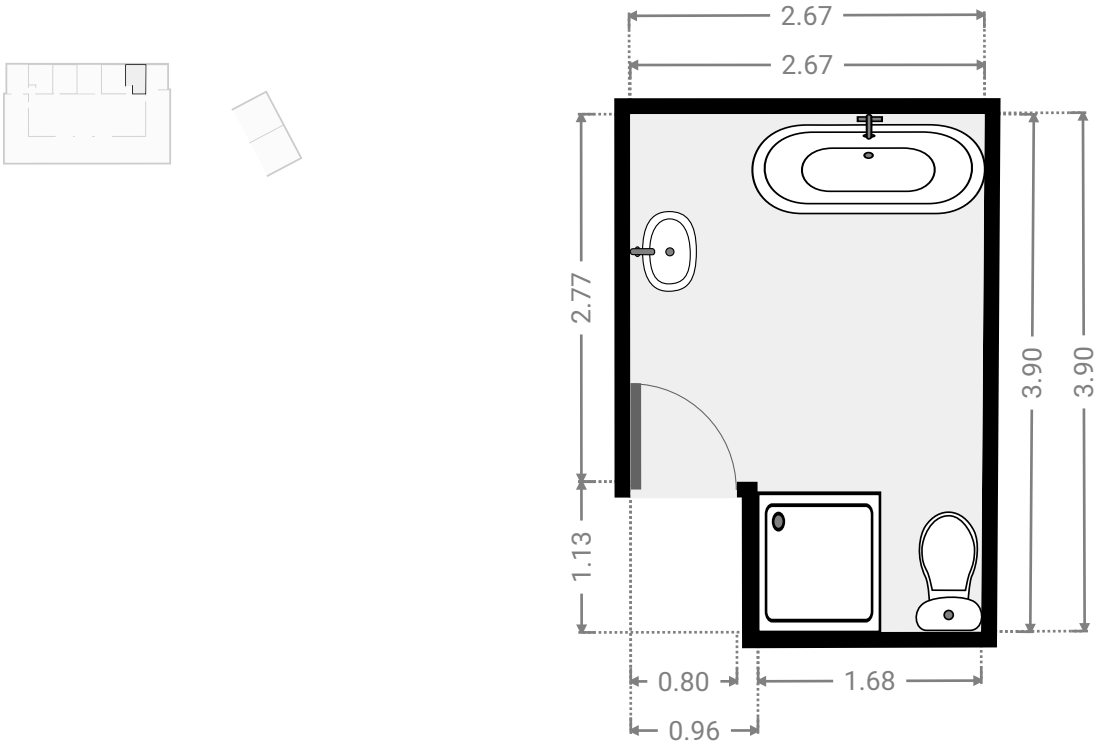
2 OPENING

Height
0.00 m



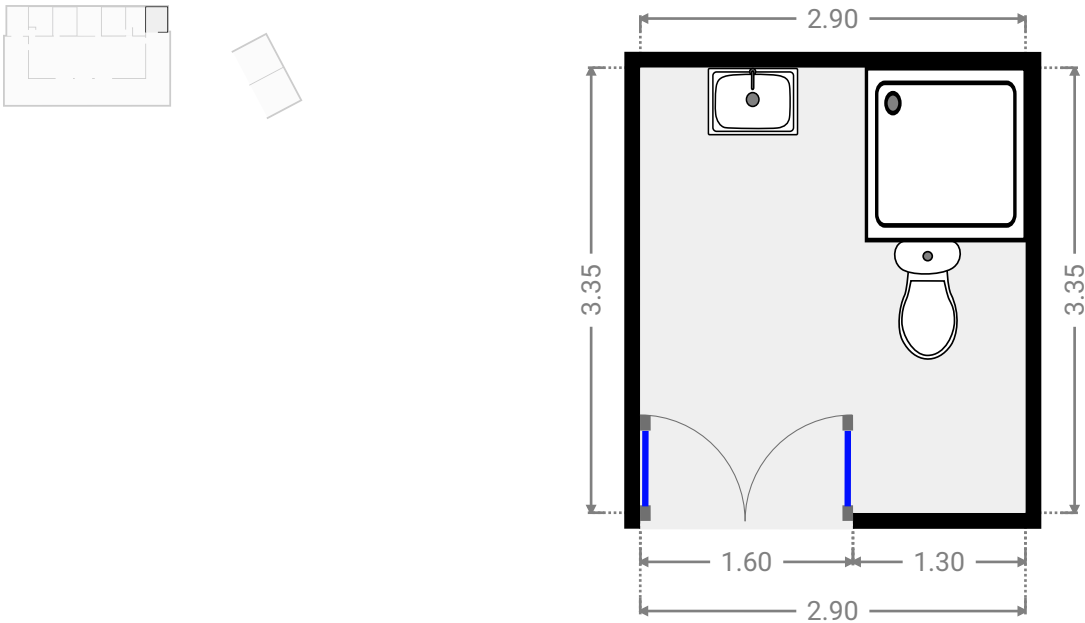
▼ Bathroom
Ground Floor

WIDTH: 2.67 m • LENGTH: 3.90 m
AREA: 9.26 m² • PERIMETER: 13.10 m



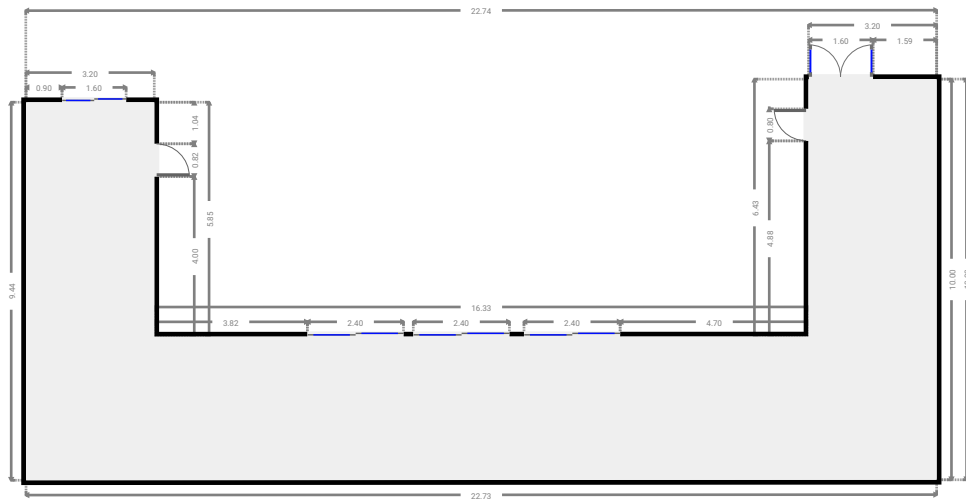
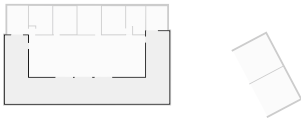
▼ Laundry Room
Ground Floor

WIDTH: 2.90 m • LENGTH: 3.35 m
AREA: 9.71 m² • PERIMETER: 12.50 m



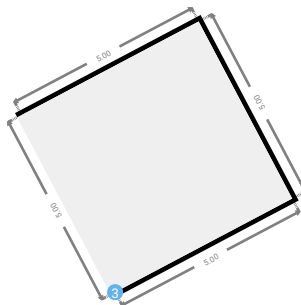
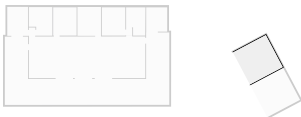
▼ Other
Ground Floor

WIDTH: 22.74 m • LENGTH: 10.00 m
AREA: 120.64 m² • PERIMETER: 77.17 m



▼ Garage
Ground Floor

WIDTH: 5.00 m • LENGTH: 5.00 m
AREA: 25.00 m² • PERIMETER: 20.00 m



▼ **Garage**/Ground Floor

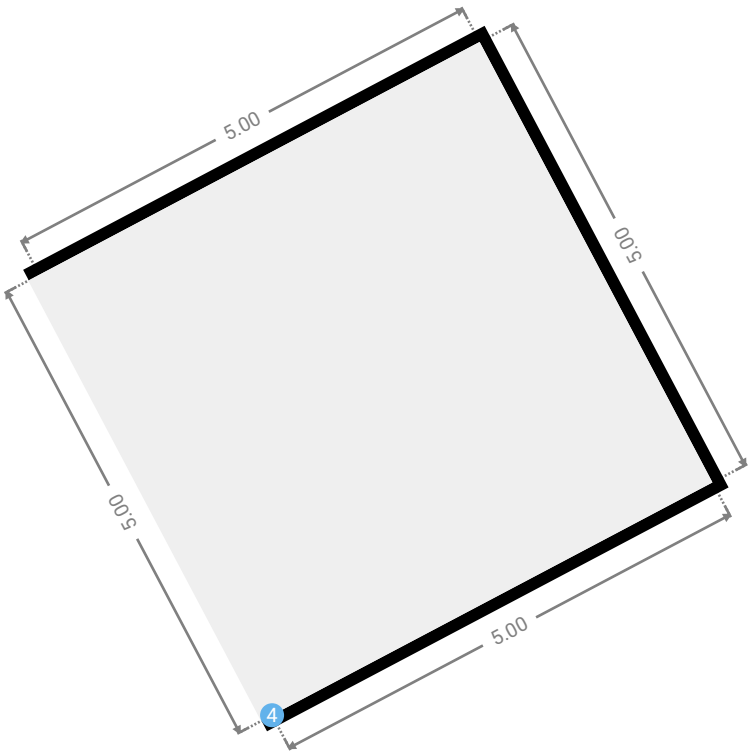
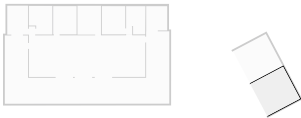
3 **OPENING**

Height
0.00 m



▼ **Garage**
Ground Floor

WIDTH: 5.00 m • LENGTH: 5.00 m
AREA: 25.00 m² • PERIMETER: 20.00 m



▼ **Garage/**Ground Floor

4 OPENING

Height
0.00 m

