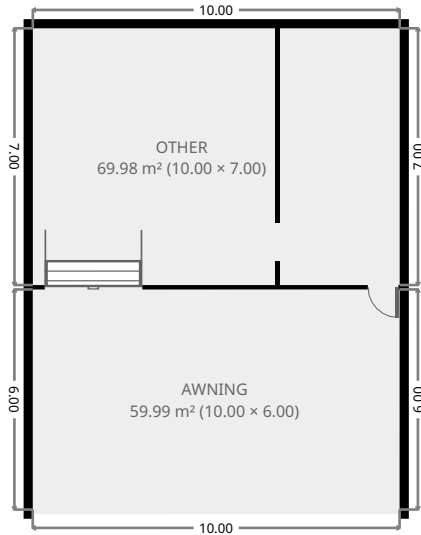


# 9 Peregrin Court

## Ground Floor



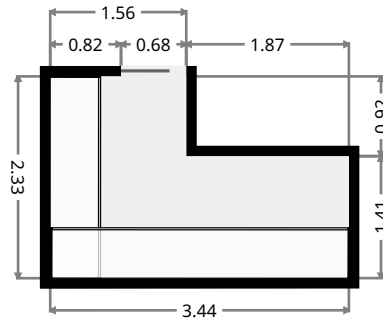
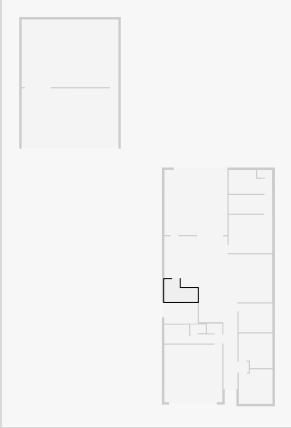
THIS FLOORPLAN IS PROVIDED WITHOUT WARRANTY OF ANY KIND. SENSOPIA DISCLAIMS ANY WARRANTY INCLUDING, WITHOUT LIMITATION, SATISFACTORY QUALITY OR ACCURACY OF DIMENSIONS.



# 9 Peregrin Court

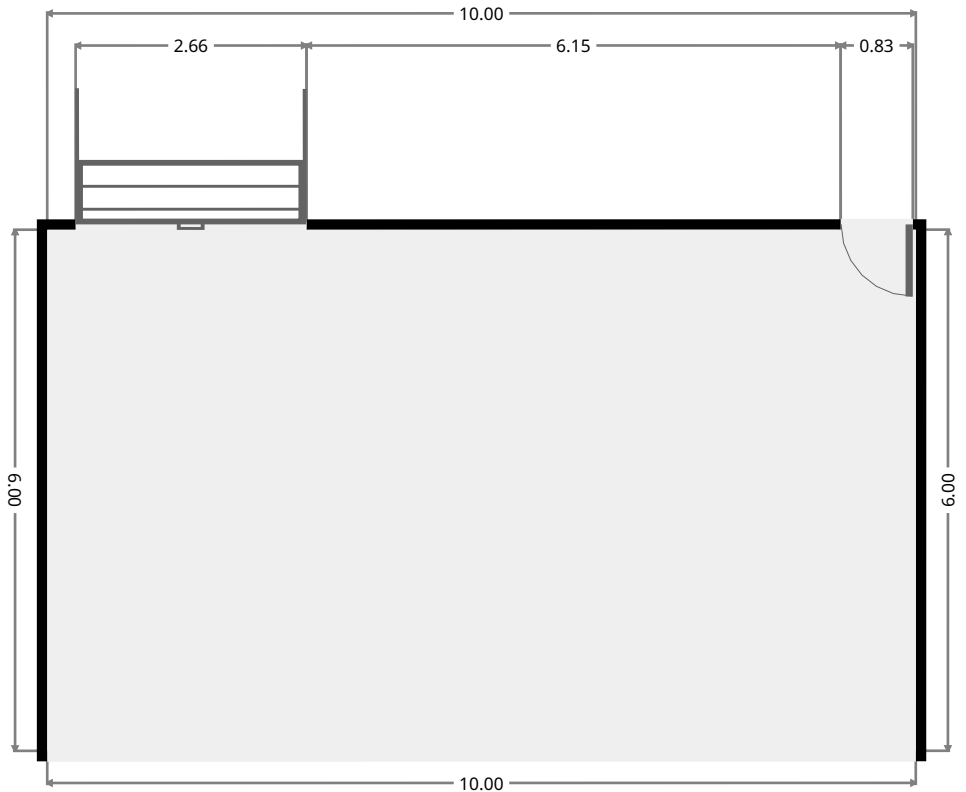
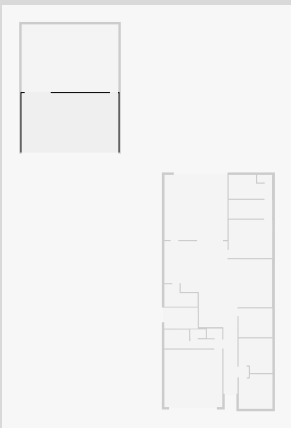
## Butlers Pantry

Width: 2.33 m  
Length: 3.44 m  
Area: 6.27 m<sup>2</sup>  
Perimeter: 11.52 m



## Awning

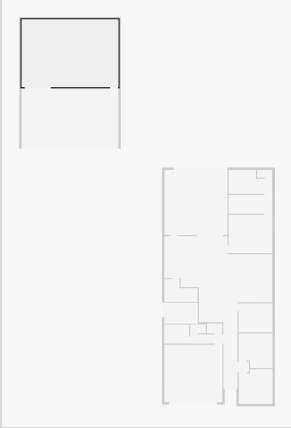
Width: 6.00 m  
Length: 10.00 m  
Area: 59.99 m<sup>2</sup>  
Perimeter: 32.00 m



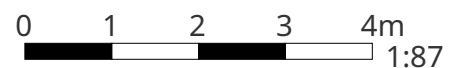
# 9 Peregrin Court

## Other

Width: 7.00 m  
Length: 10.00 m  
Area: 69.98 m<sup>2</sup>  
Perimeter: 34.00 m



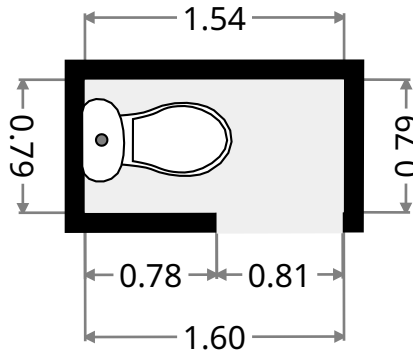
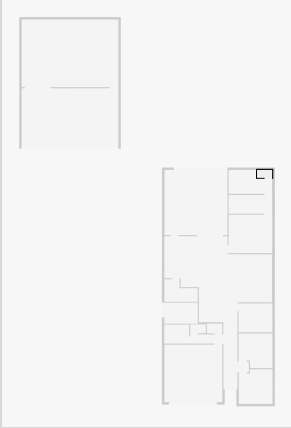
THIS FLOORPLAN IS PROVIDED WITHOUT WARRANTY OF ANY KIND. SENSOPIA DISCLAIMS ANY WARRANTY INCLUDING, WITHOUT LIMITATION, SATISFACTORY QUALITY OR ACCURACY OF DIMENSIONS.



# 9 Peregrin Court

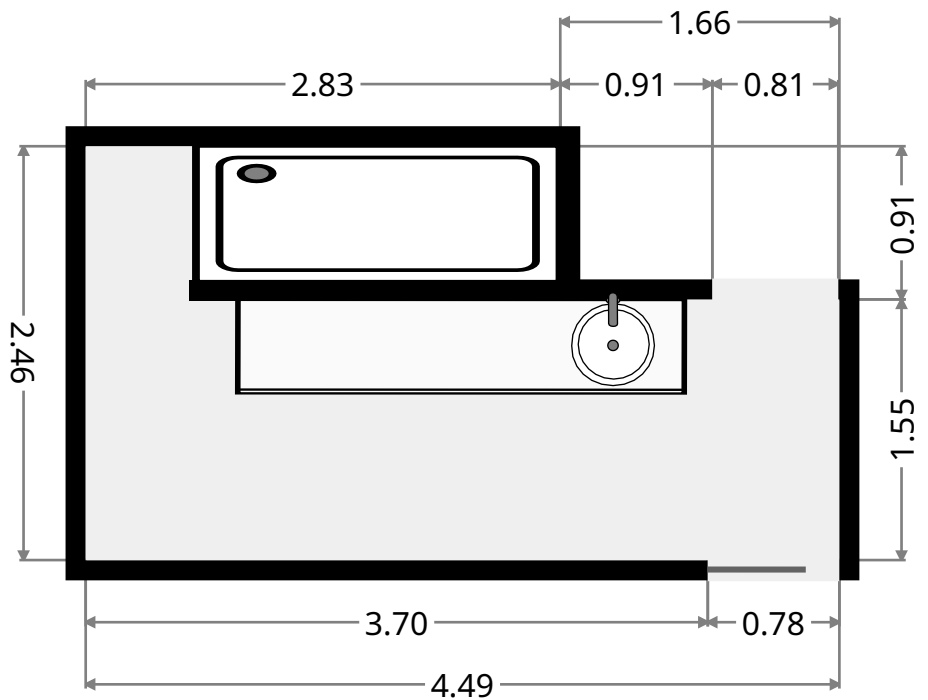
## Toilet

Width: 0.79 m  
 Length: 1.54 m  
 Area: 1.22 m<sup>2</sup>  
 Perimeter: 4.67 m

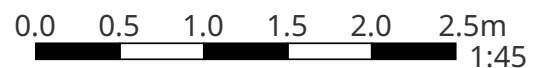


## Ensuite

Width: 2.46 m  
 Length: 4.49 m  
 Area: 9.54 m<sup>2</sup>  
 Perimeter: 13.90 m



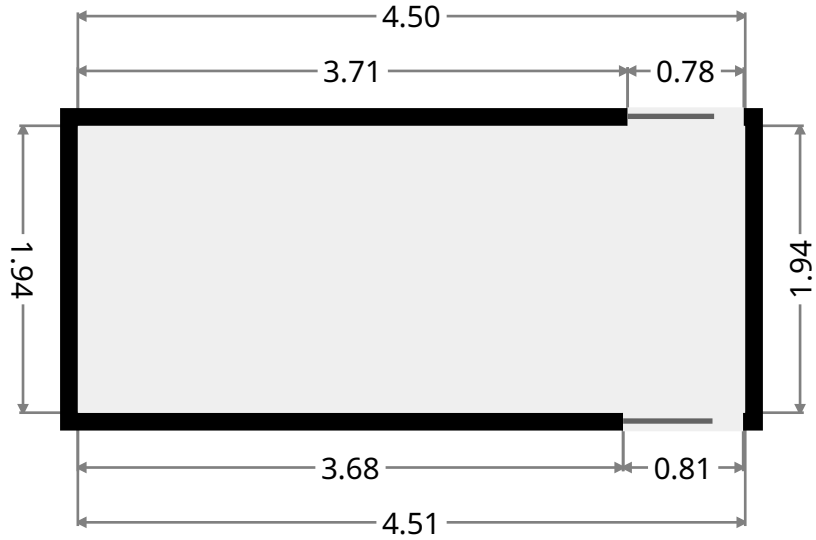
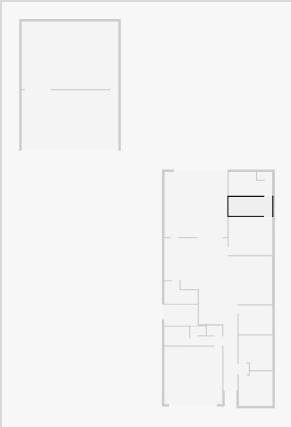
THIS FLOORPLAN IS PROVIDED WITHOUT WARRANTY OF ANY KIND. SENSOPIA DISCLAIMS ANY WARRANTY INCLUDING, WITHOUT LIMITATION, SATISFACTORY QUALITY OR ACCURACY OF DIMENSIONS.



# 9 Peregrin Court

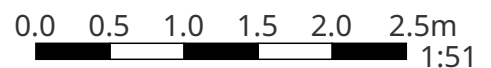
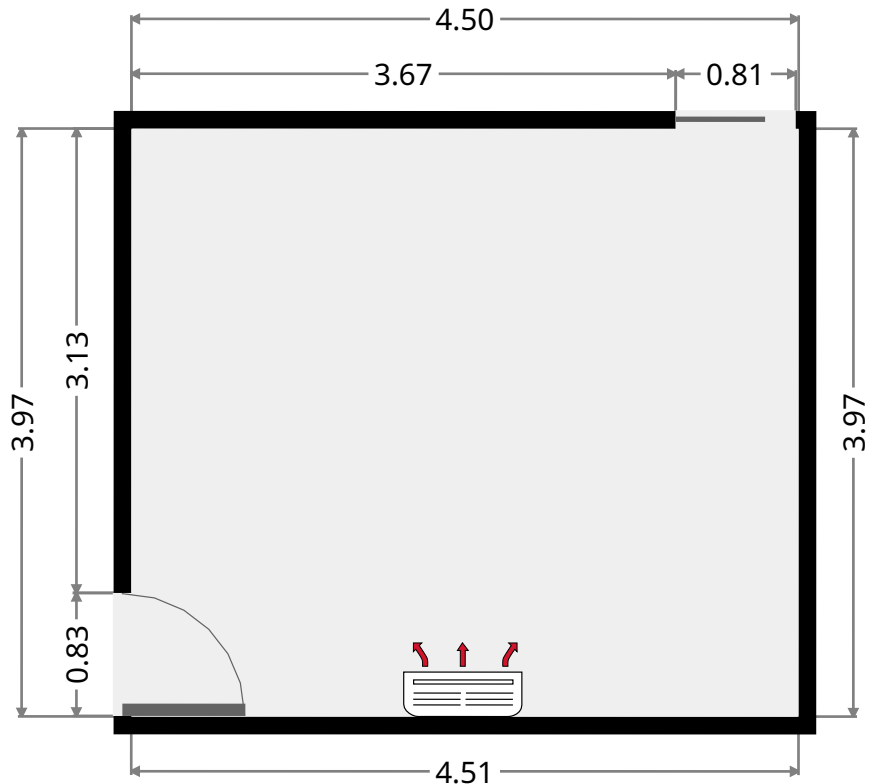
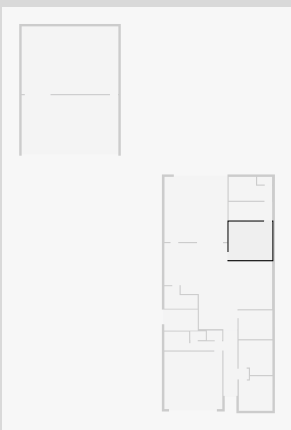
## Closet

Width: 1.94 m  
 Length: 4.50 m  
 Area: 8.72 m<sup>2</sup>  
 Perimeter: 12.88 m



## Master Bedroom

Width: 3.97 m  
 Length: 4.50 m  
 Area: 17.86 m<sup>2</sup>  
 Perimeter: 16.94 m

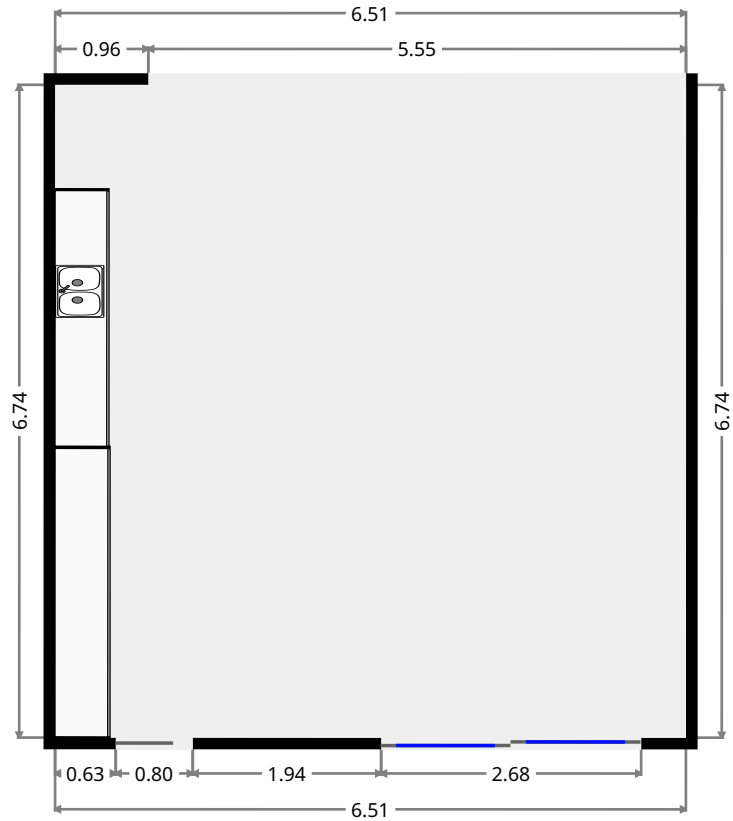
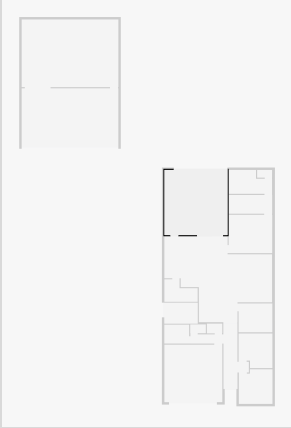


THIS FLOORPLAN IS PROVIDED WITHOUT WARRANTY OF ANY KIND. SENSOPIA DISCLAIMS ANY WARRANTY INCLUDING, WITHOUT LIMITATION, SATISFACTORY QUALITY OR ACCURACY OF DIMENSIONS.

# 9 Peregrin Court

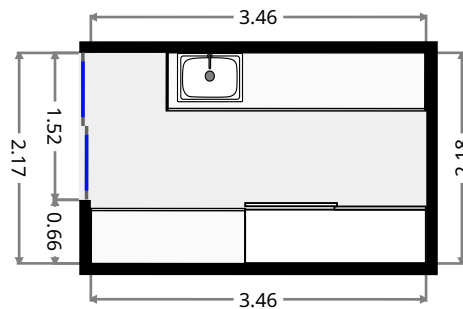
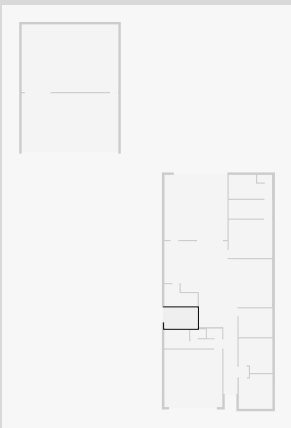
## Outdoor Area

Width: 6.51 m  
 Length: 6.74 m  
 Area: 43.86 m<sup>2</sup>  
 Perimeter: 26.50 m



## Laundry Room

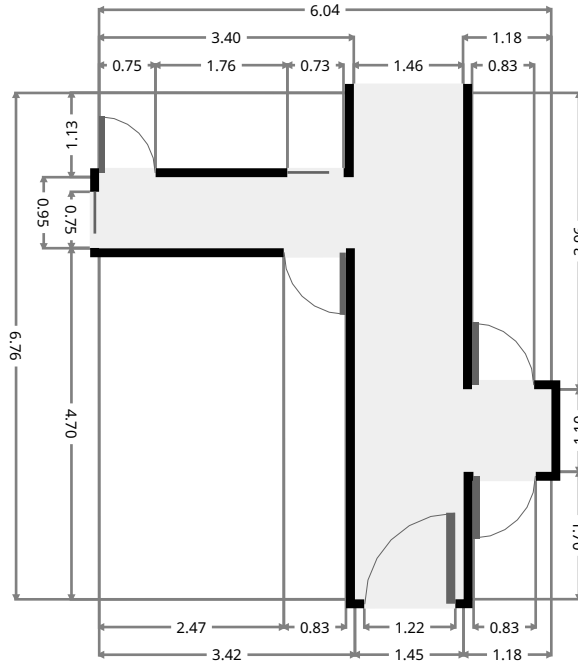
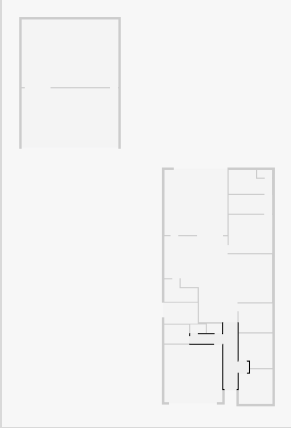
Width: 2.18 m  
 Length: 3.46 m  
 Area: 7.52 m<sup>2</sup>  
 Perimeter: 11.27 m



# 9 Peregrin Court

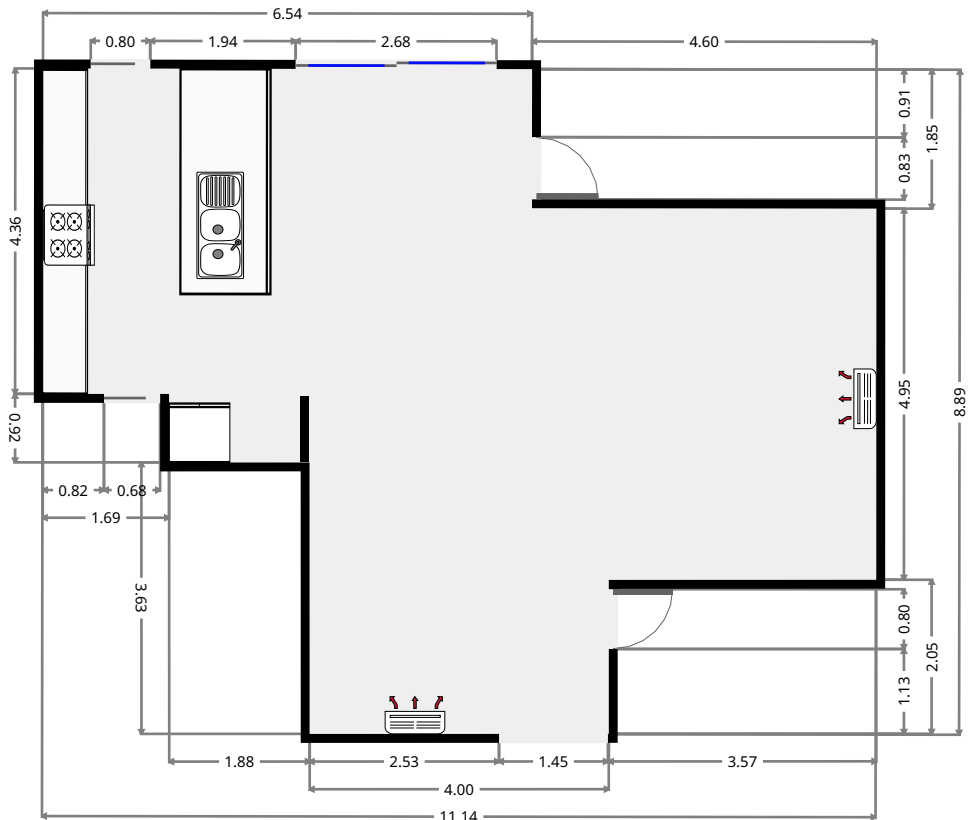
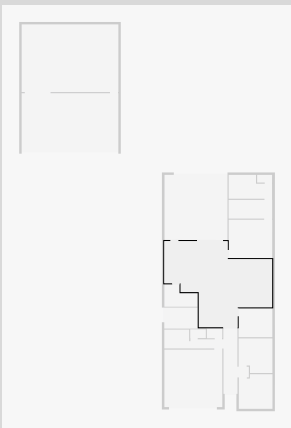
## Hall

Width: 6.04 m  
 Length: 6.76 m  
 Area: 14.35 m<sup>2</sup>  
 Perimeter: 25.62 m



## Kitchen/Living/Dining

Width: 8.89 m  
 Length: 11.14 m  
 Area: 68.56 m<sup>2</sup>  
 Perimeter: 40.05 m

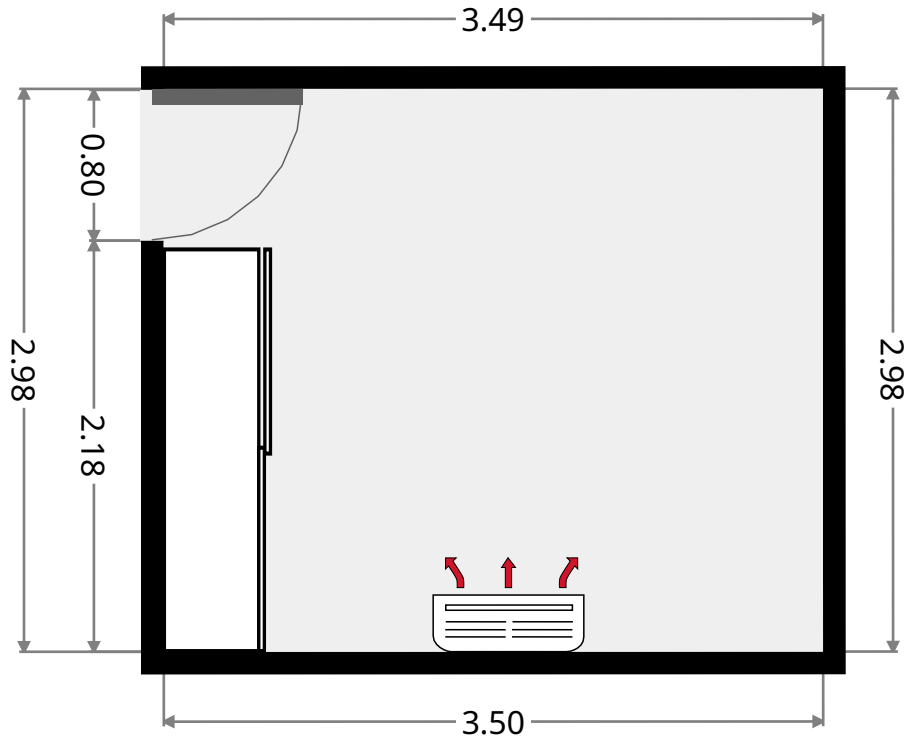


THIS FLOORPLAN IS PROVIDED WITHOUT WARRANTY OF ANY KIND. SENSOPIA DISCLAIMS ANY WARRANTY INCLUDING, WITHOUT LIMITATION, SATISFACTORY QUALITY OR ACCURACY OF DIMENSIONS.

# 9 Peregrin Court

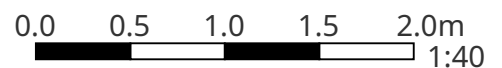
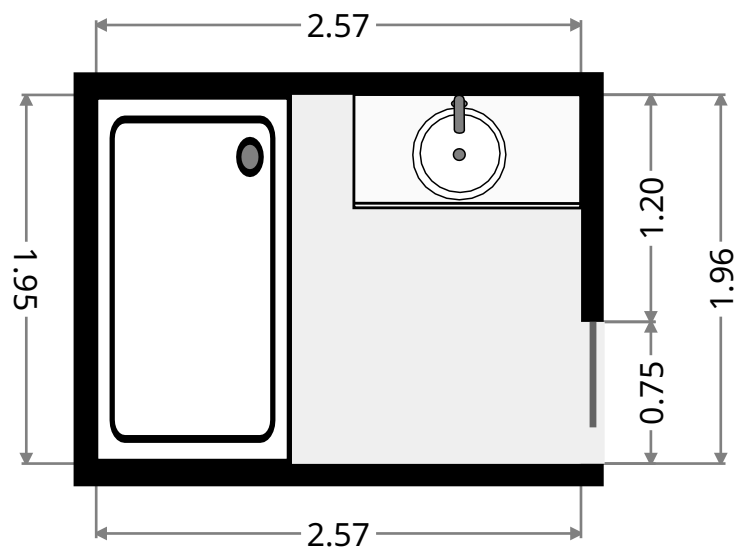
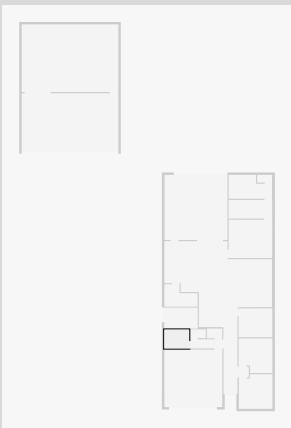
## Bedroom

Width: 2.98 m  
 Length: 3.49 m  
 Area: 10.40 m<sup>2</sup>  
 Perimeter: 12.94 m



## Bathroom

Width: 1.96 m  
 Length: 2.57 m  
 Area: 5.01 m<sup>2</sup>  
 Perimeter: 9.04 m

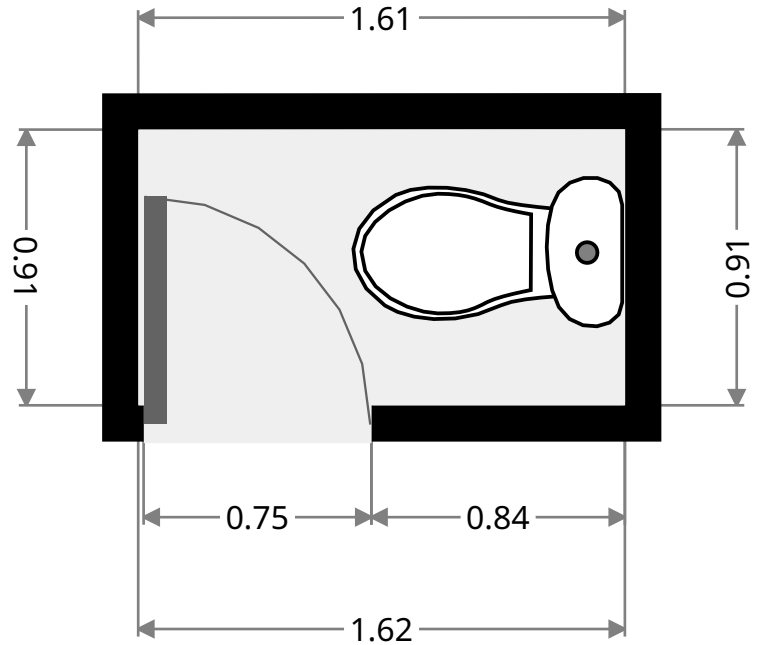
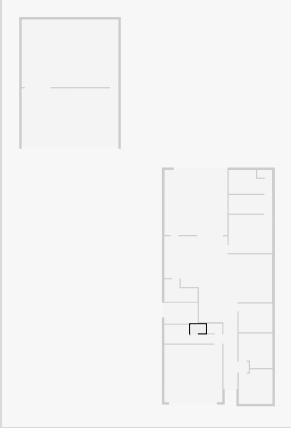




# 9 Peregrin Court

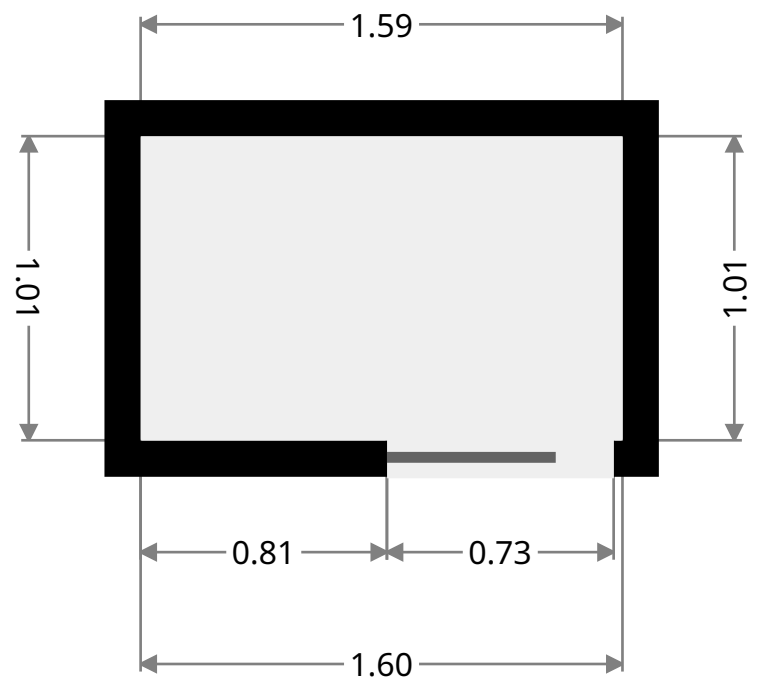
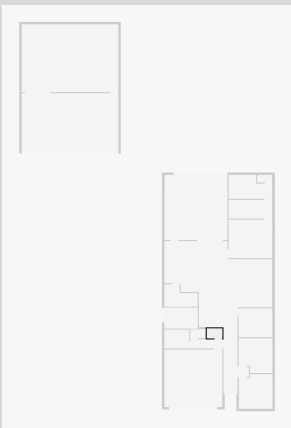
## Toilet

Width: 0.91 m  
Length: 1.61 m  
Area: 1.47 m<sup>2</sup>  
Perimeter: 5.05 m



## Closet

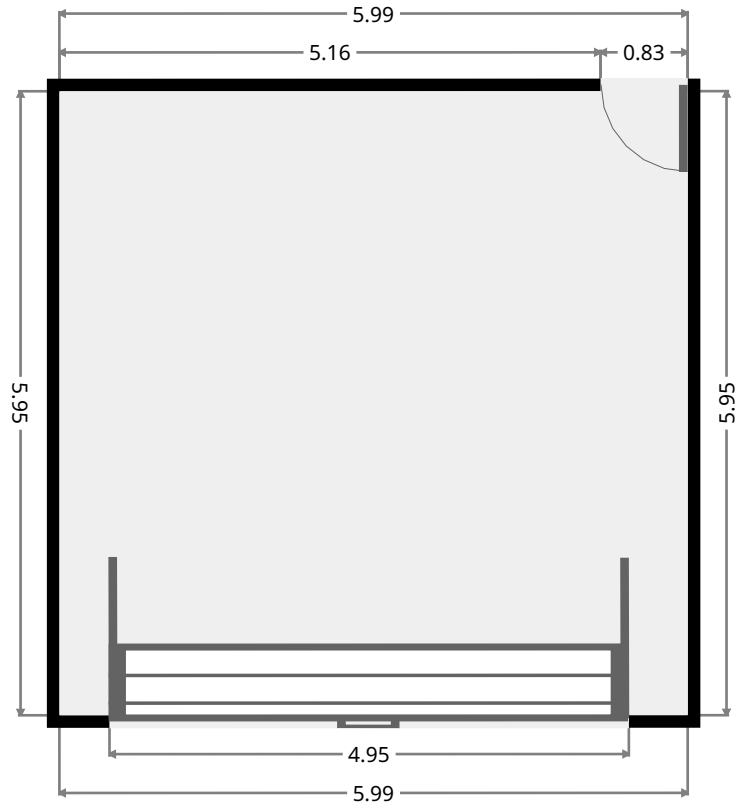
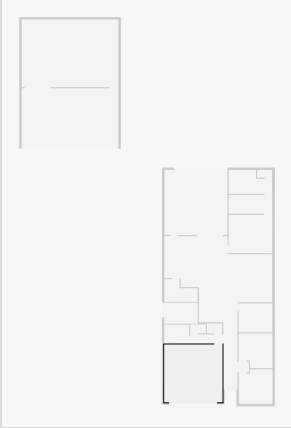
Width: 1.01 m  
Length: 1.59 m  
Area: 1.60 m<sup>2</sup>  
Perimeter: 5.20 m



# 9 Peregrin Court

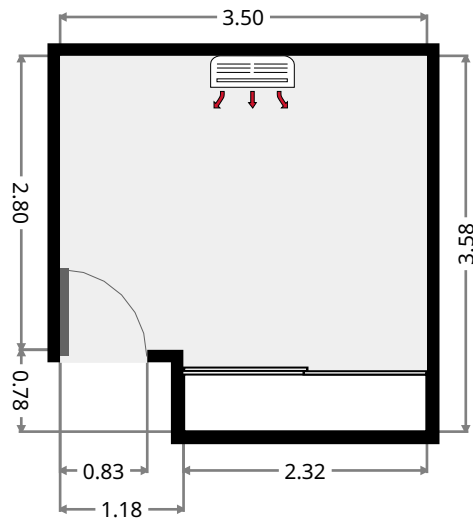
## Garage

Width: 5.95 m  
 Length: 5.99 m  
 Area: 35.59 m<sup>2</sup>  
 Perimeter: 23.86 m



## Bedroom

Width: 3.50 m  
 Length: 3.58 m  
 Area: 11.59 m<sup>2</sup>  
 Perimeter: 14.15 m



# 9 Peregrin Court

## Bedroom

Width: 3.48 m  
Length: 3.58 m  
Area: 11.93 m<sup>2</sup>  
Perimeter: 14.11 m

