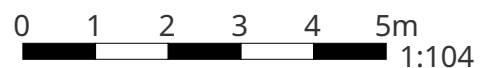


# 7 Argyle Avenue

## Ground Floor



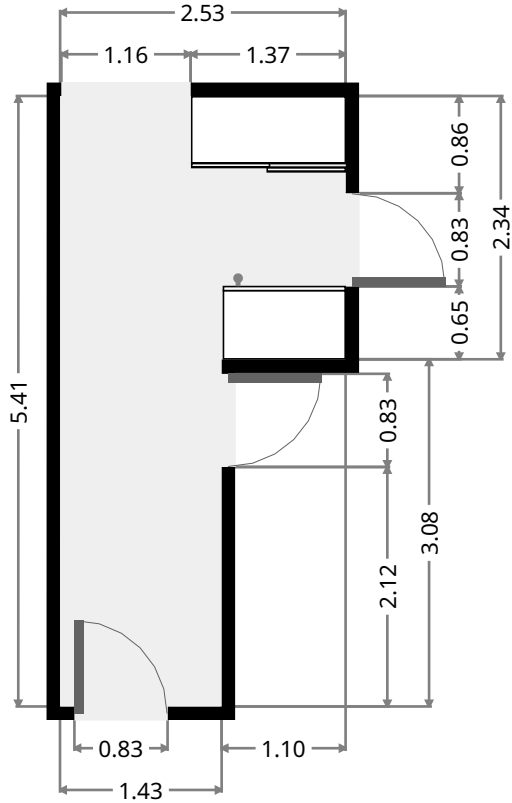
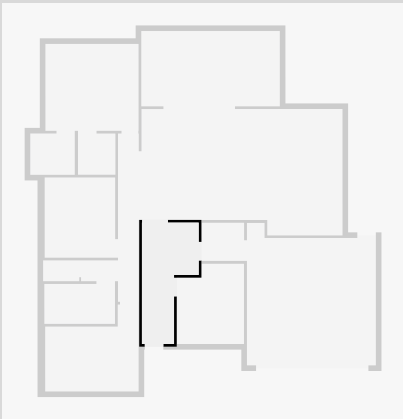
THIS FLOORPLAN IS PROVIDED WITHOUT WARRANTY OF ANY KIND. SENSOPIA DISCLAIMS ANY WARRANTY INCLUDING, WITHOUT LIMITATION, SATISFACTORY QUALITY OR ACCURACY OF DIMENSIONS.



# 7 Argyle Avenue

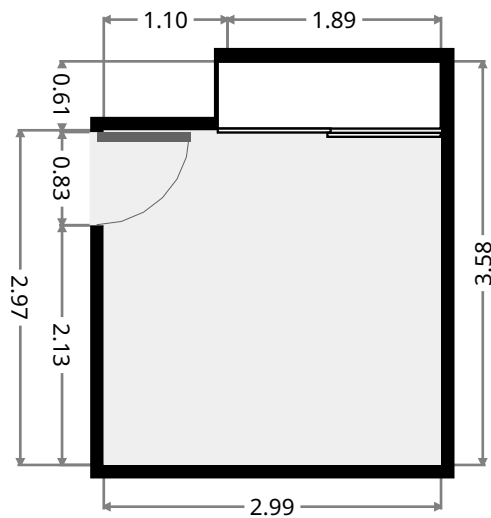
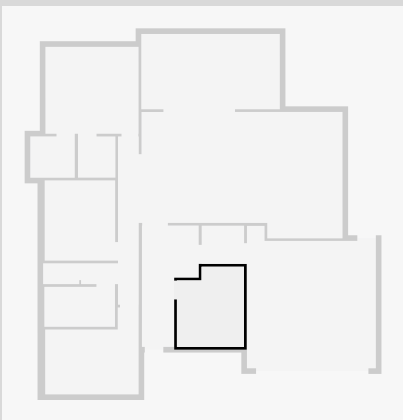
## Hall

Width: 2.53 m  
 Length: 5.41 m  
 Area: 10.32 m<sup>2</sup>  
 Perimeter: 15.89 m



## Bedroom

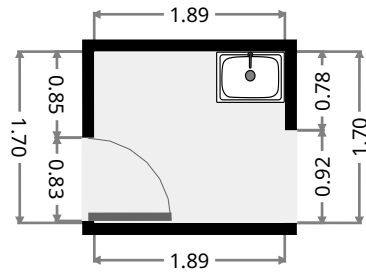
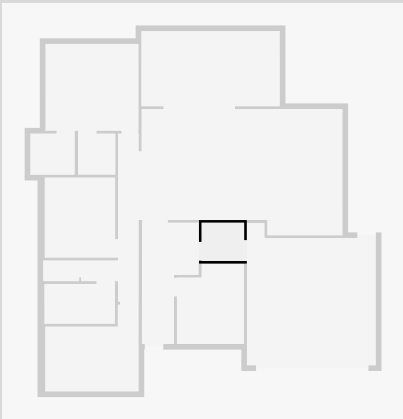
Width: 2.99 m  
 Length: 3.58 m  
 Area: 10.03 m<sup>2</sup>  
 Perimeter: 13.14 m



# 7 Argyle Avenue

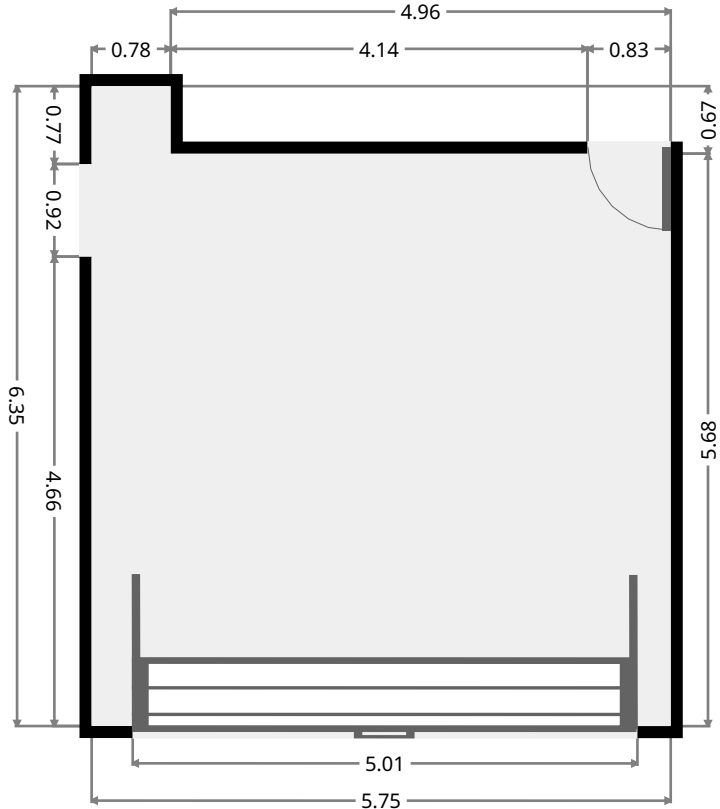
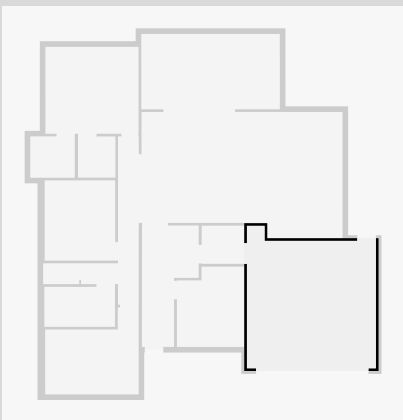
## Laundry Room

Width: 1.70 m  
Length: 1.89 m  
Area: 3.21 m<sup>2</sup>  
Perimeter: 7.18 m



## Garage

Width: 5.75 m  
Length: 6.35 m  
Area: 33.17 m<sup>2</sup>  
Perimeter: 24.20 m

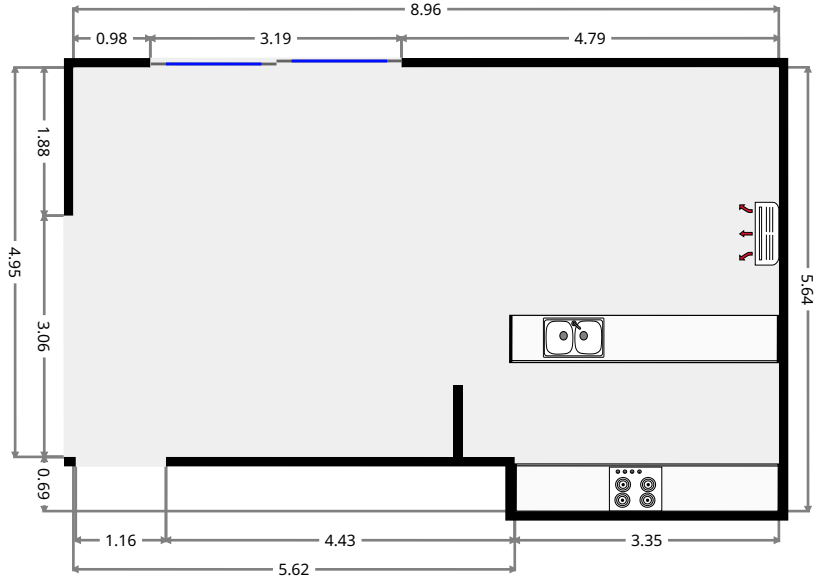
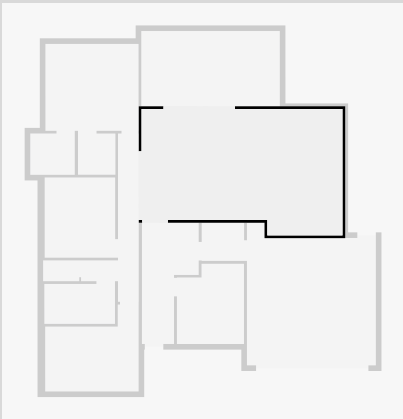


THIS FLOORPLAN IS PROVIDED WITHOUT WARRANTY OF ANY KIND. SENSOPIA DISCLAIMS ANY WARRANTY INCLUDING, WITHOUT LIMITATION, SATISFACTORY QUALITY OR ACCURACY OF DIMENSIONS.

# 7 Argyle Avenue

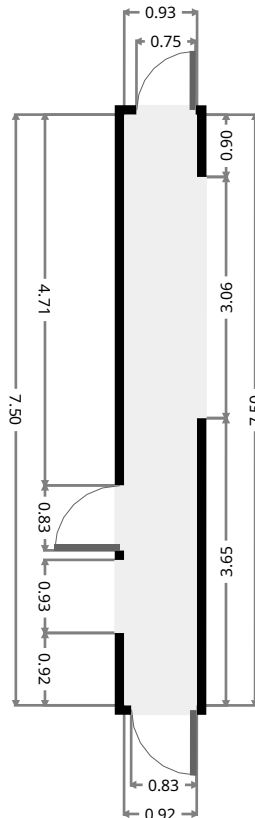
## Kitchen/Living/Dining

Width: 5.64 m  
 Length: 8.96 m  
 Area: 46.65 m<sup>2</sup>  
 Perimeter: 29.20 m



## Hall

Width: 0.93 m  
 Length: 7.50 m  
 Area: 6.93 m<sup>2</sup>  
 Perimeter: 16.85 m

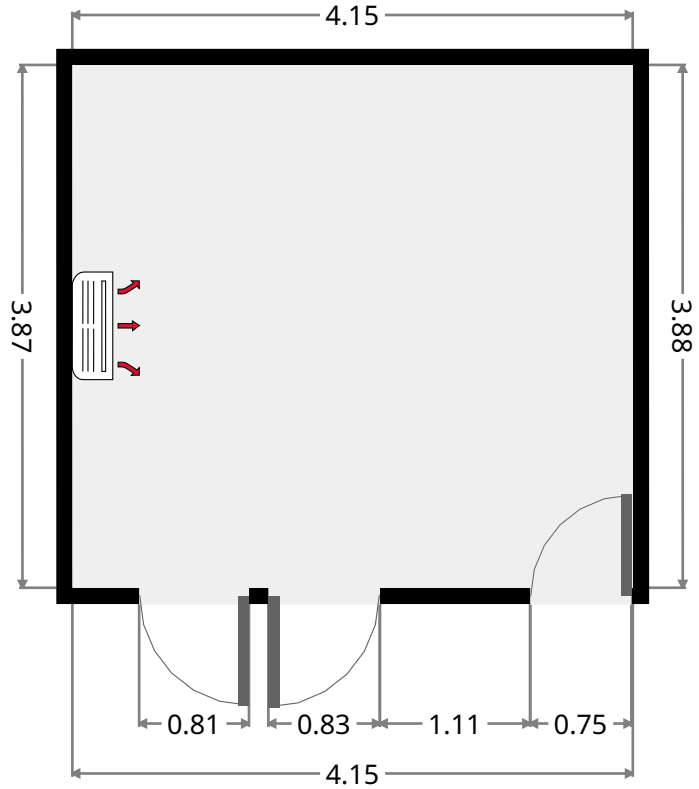
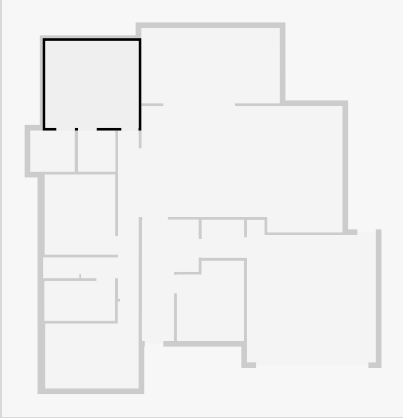


THIS FLOORPLAN IS PROVIDED WITHOUT WARRANTY OF ANY KIND. SENSOPIA DISCLAIMS ANY WARRANTY INCLUDING, WITHOUT LIMITATION, SATISFACTORY QUALITY OR ACCURACY OF DIMENSIONS.

# 7 Argyle Avenue

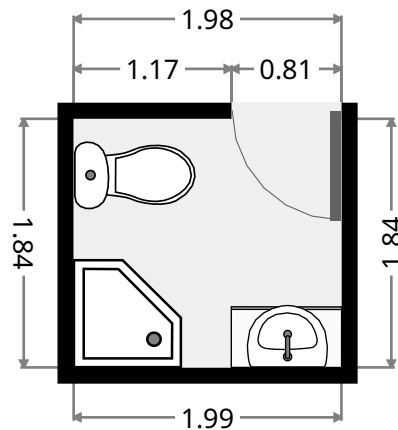
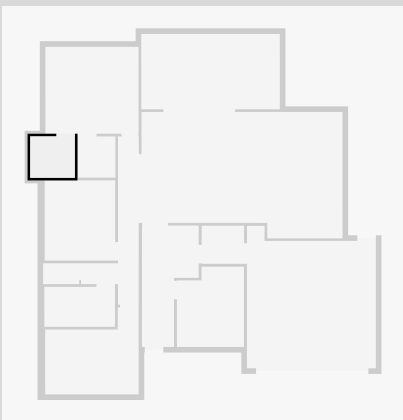
## Master Bedroom

Width: 3.88 m  
Length: 4.15 m  
Area: 16.09 m<sup>2</sup>  
Perimeter: 16.05 m



## Ensuite

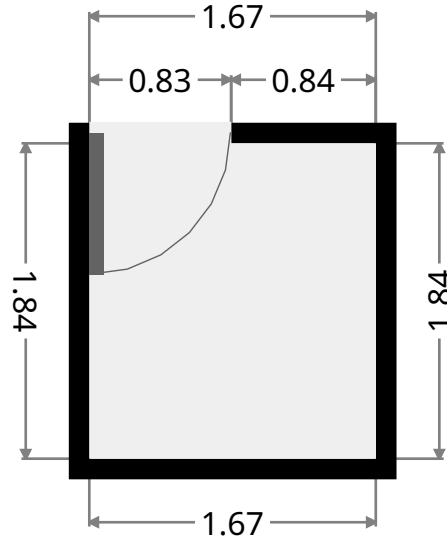
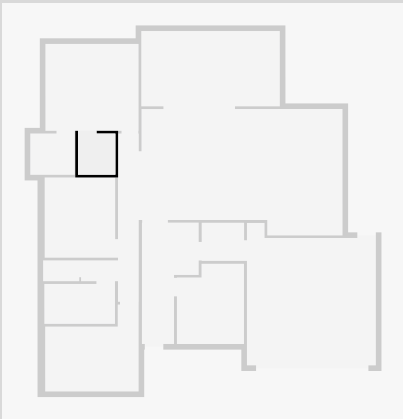
Width: 1.84 m  
Length: 1.98 m  
Area: 3.65 m<sup>2</sup>  
Perimeter: 7.65 m



# 7 Argyle Avenue

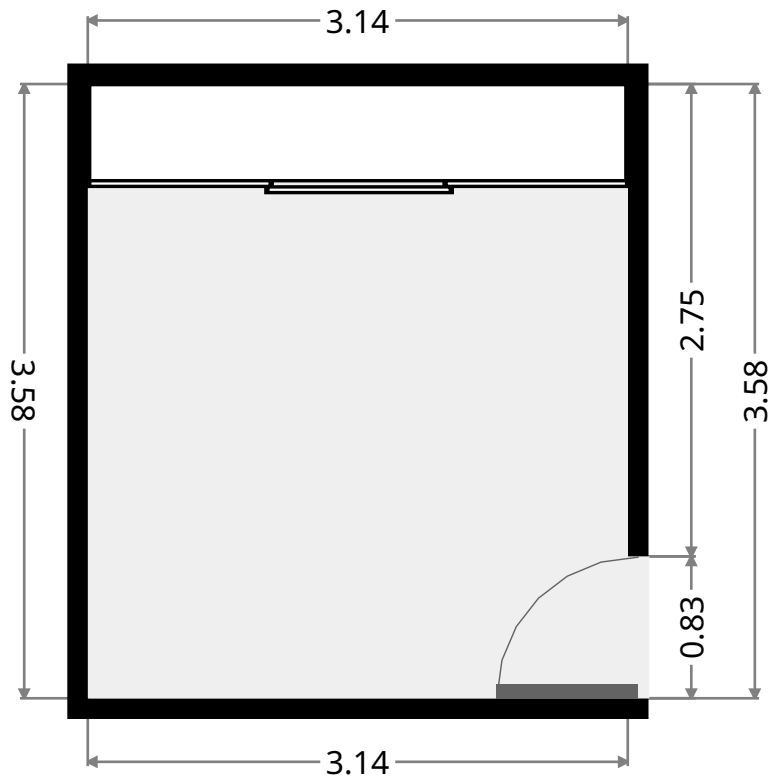
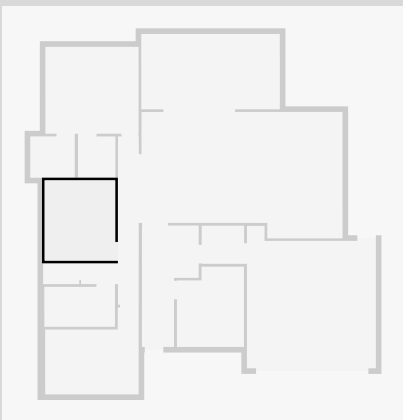
## WIR

Width: 1.67 m  
Length: 1.84 m  
Area: 3.06 m<sup>2</sup>  
Perimeter: 7.01 m

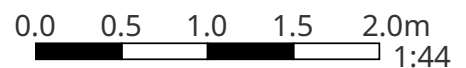


## Bedroom

Width: 3.14 m  
Length: 3.58 m  
Area: 11.24 m<sup>2</sup>  
Perimeter: 13.44 m



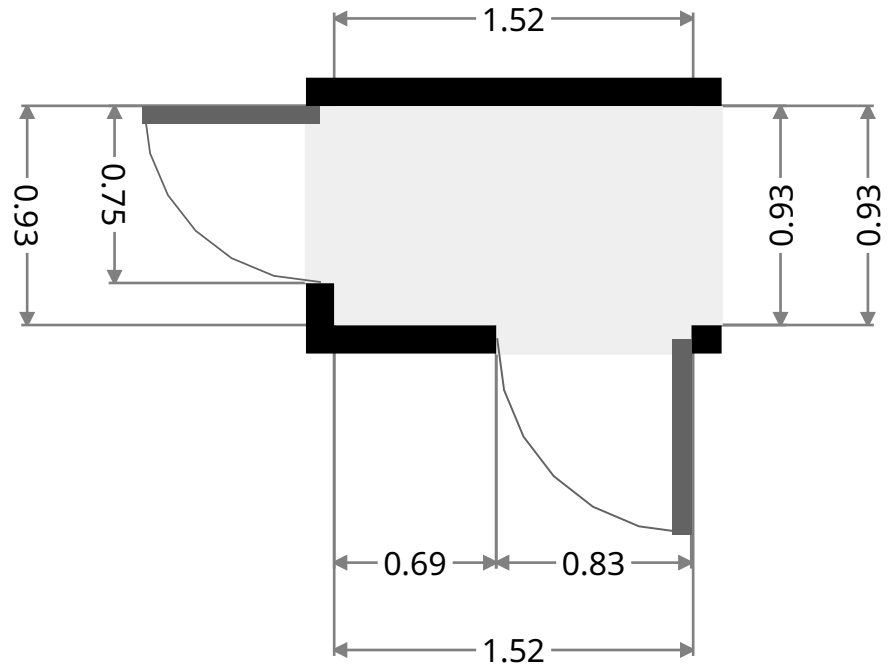
THIS FLOORPLAN IS PROVIDED WITHOUT WARRANTY OF ANY KIND. SENSOPIA DISCLAIMS ANY WARRANTY INCLUDING, WITHOUT LIMITATION, SATISFACTORY QUALITY OR ACCURACY OF DIMENSIONS.



# 7 Argyle Avenue

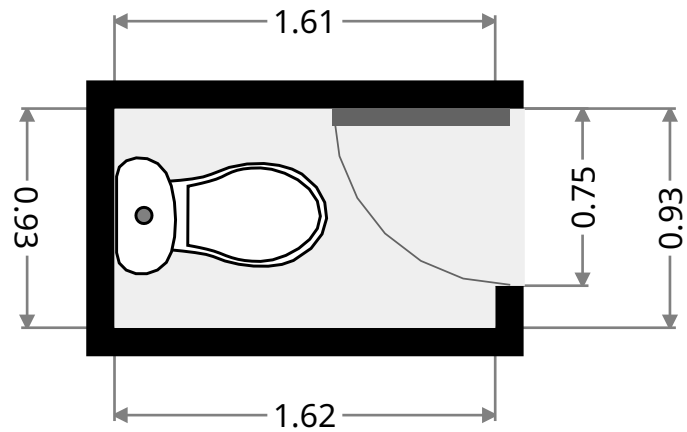
## Hall

Width: 0.93 m  
Length: 1.52 m  
Area: 1.41 m<sup>2</sup>  
Perimeter: 4.90 m



## Toilet

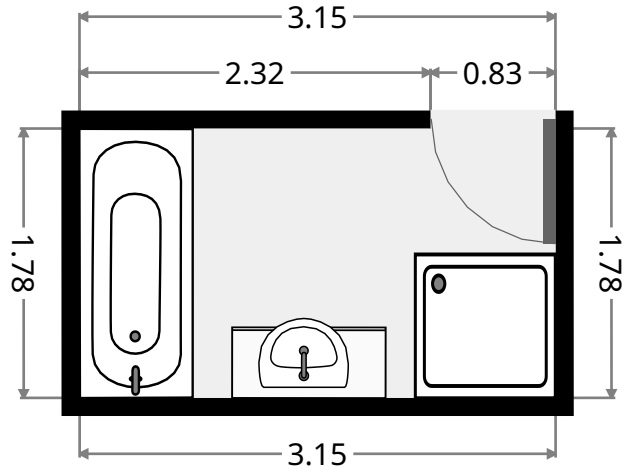
Width: 0.93 m  
Length: 1.61 m  
Area: 1.50 m<sup>2</sup>  
Perimeter: 5.08 m



# 7 Argyle Avenue

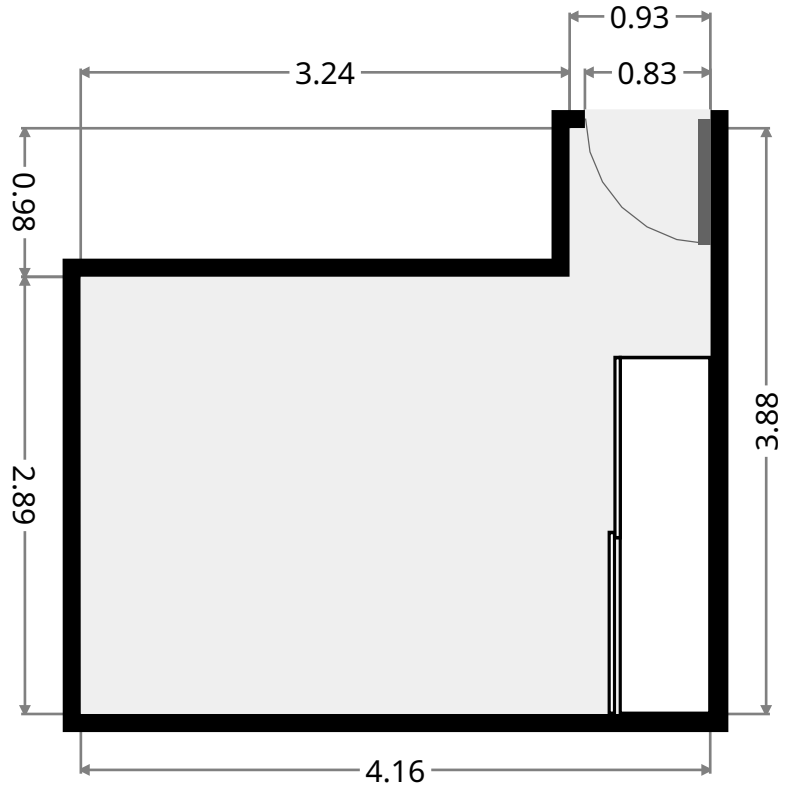
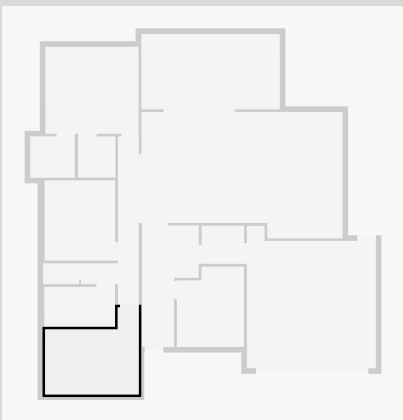
## Bathroom

Width: 1.78 m  
 Length: 3.15 m  
 Area: 5.61 m<sup>2</sup>  
 Perimeter: 9.86 m

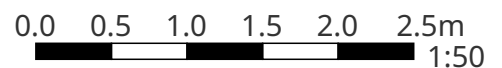


## Bedroom

Width: 3.88 m  
 Length: 4.16 m  
 Area: 12.96 m<sup>2</sup>  
 Perimeter: 16.08 m



THIS FLOORPLAN IS PROVIDED WITHOUT WARRANTY OF ANY KIND. SENSOPIA DISCLAIMS ANY WARRANTY INCLUDING, WITHOUT LIMITATION, SATISFACTORY QUALITY OR ACCURACY OF DIMENSIONS.





# 7 Argyle Avenue

## Outdoor Area

Width: 3.36 m  
Length: 6.18 m  
Area: 20.74 m<sup>2</sup>  
Perimeter: 19.07 m

