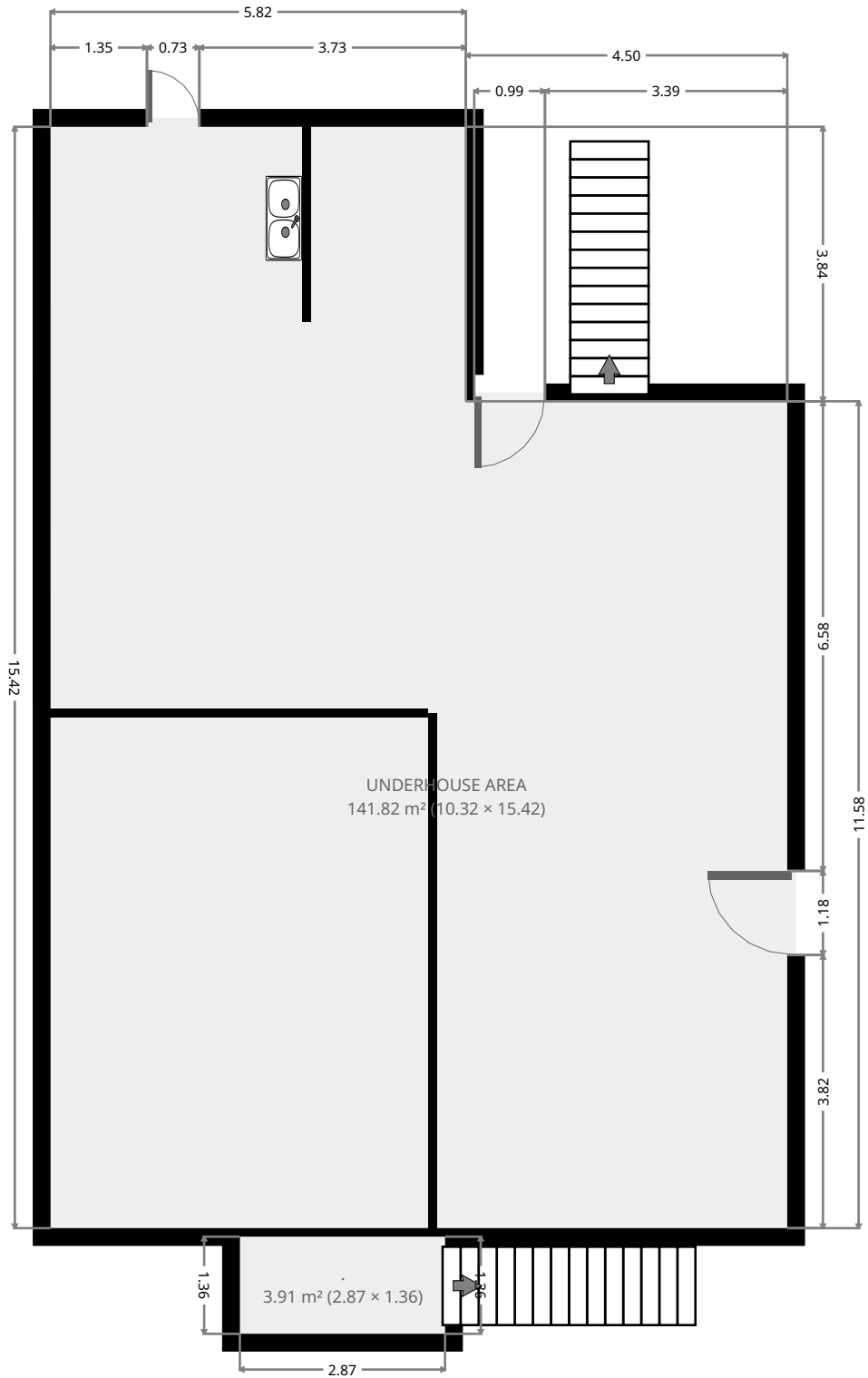


58 Archer Street

Ground Floor



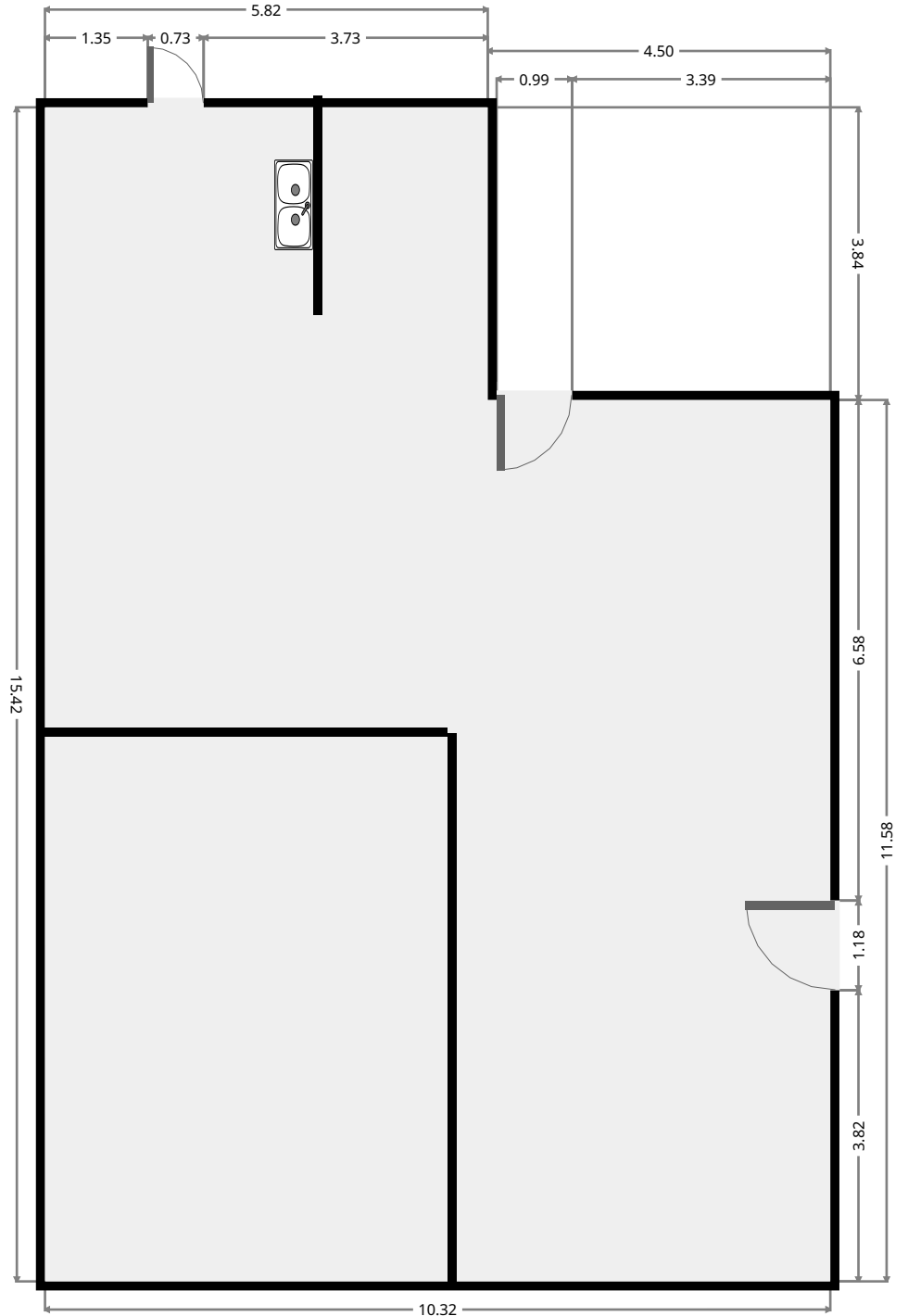
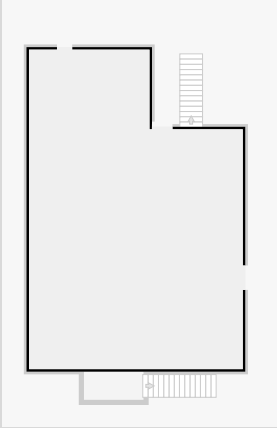
THIS FLOORPLAN IS PROVIDED WITHOUT WARRANTY OF ANY KIND. SENSOPIA DISCLAIMS ANY WARRANTY INCLUDING, WITHOUT LIMITATION, SATISFACTORY QUALITY OR ACCURACY OF DIMENSIONS.



58 Archer Street

Underhouse Area

Width: 10.32 m
Length: 15.42 m
Area: 141.82 m²
Perimeter: 51.48 m

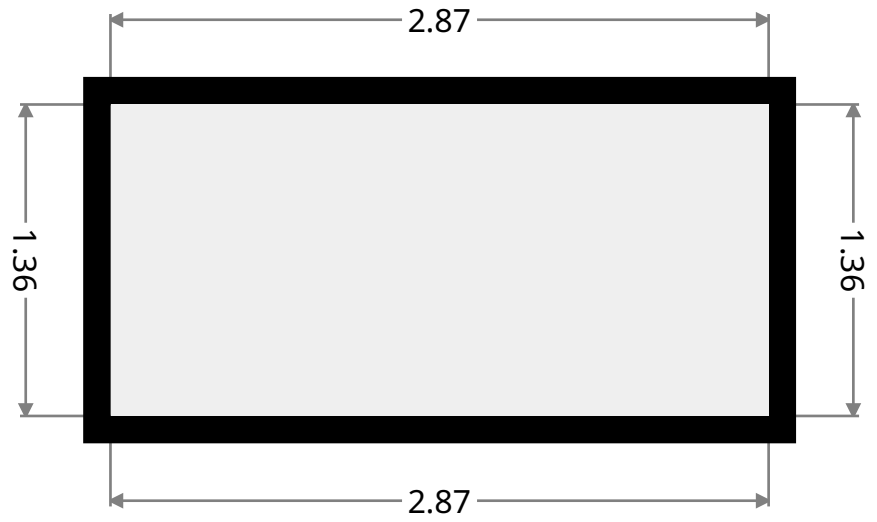
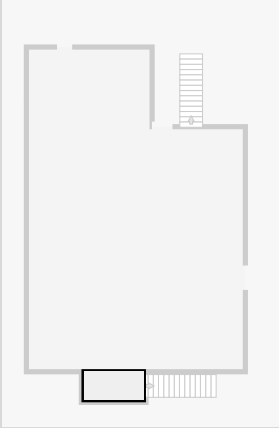


THIS FLOORPLAN IS PROVIDED WITHOUT WARRANTY OF ANY KIND. SENSOPIA DISCLAIMS ANY WARRANTY INCLUDING, WITHOUT LIMITATION, SATISFACTORY QUALITY OR ACCURACY OF DIMENSIONS.



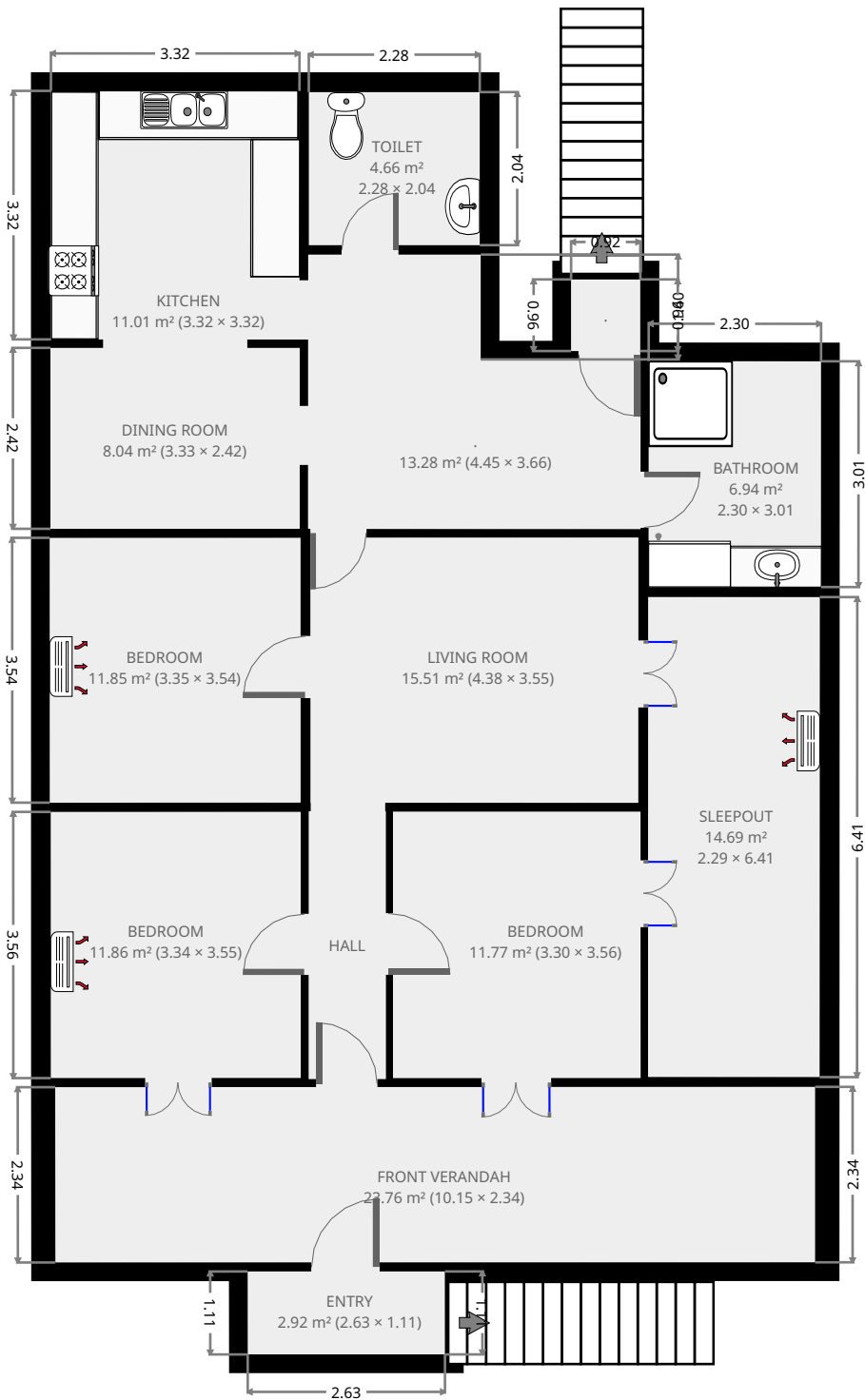
58 Archer Street

•
Width: 1.36 m
Length: 2.87 m
Area: 3.91 m²
Perimeter: 8.47 m

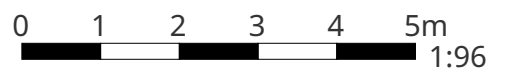


58 Archer Street

1st Floor



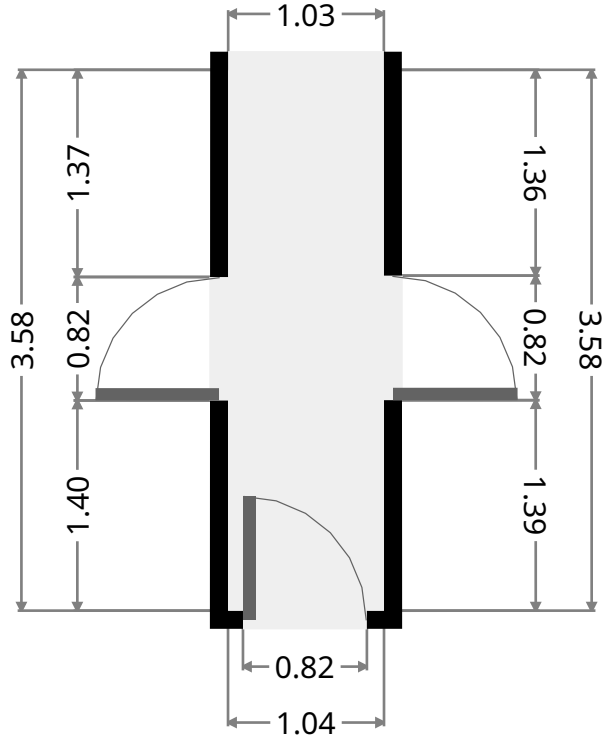
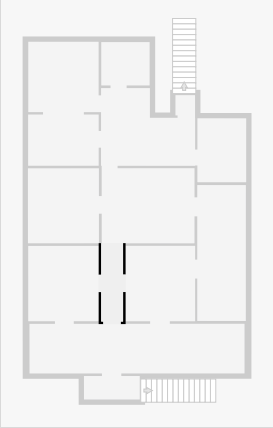
THIS FLOORPLAN IS PROVIDED WITHOUT WARRANTY OF ANY KIND. SENSOPIA DISCLAIMS ANY WARRANTY INCLUDING, WITHOUT LIMITATION, SATISFACTORY QUALITY OR ACCURACY OF DIMENSIONS.



58 Archer Street

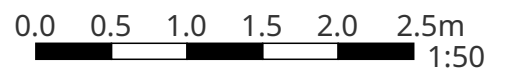
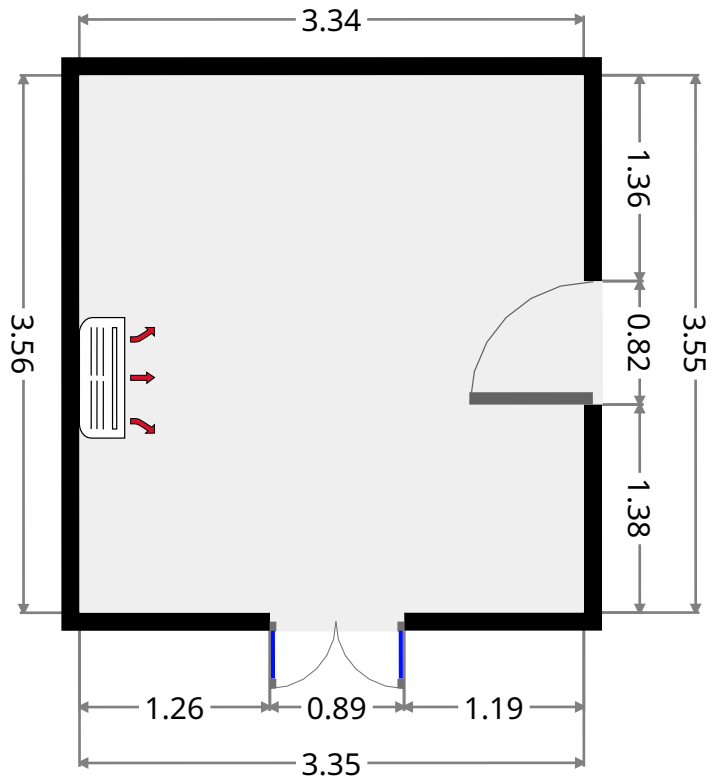
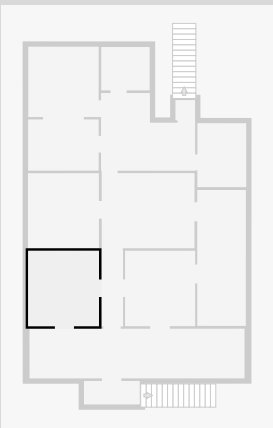
Hall

Width: 1.03 m
 Length: 3.58 m
 Area: 3.69 m²
 Perimeter: 9.22 m



Bedroom

Width: 3.34 m
 Length: 3.55 m
 Area: 11.86 m²
 Perimeter: 13.78 m

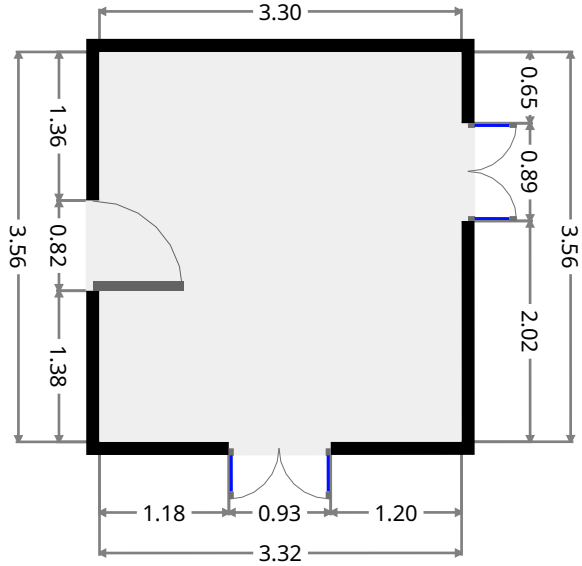
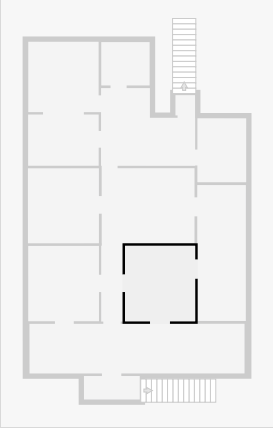


THIS FLOORPLAN IS PROVIDED WITHOUT WARRANTY OF ANY KIND. SENSOPIA DISCLAIMS ANY WARRANTY INCLUDING, WITHOUT LIMITATION, SATISFACTORY QUALITY OR ACCURACY OF DIMENSIONS.

58 Archer Street

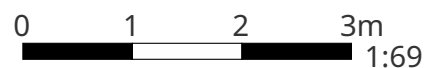
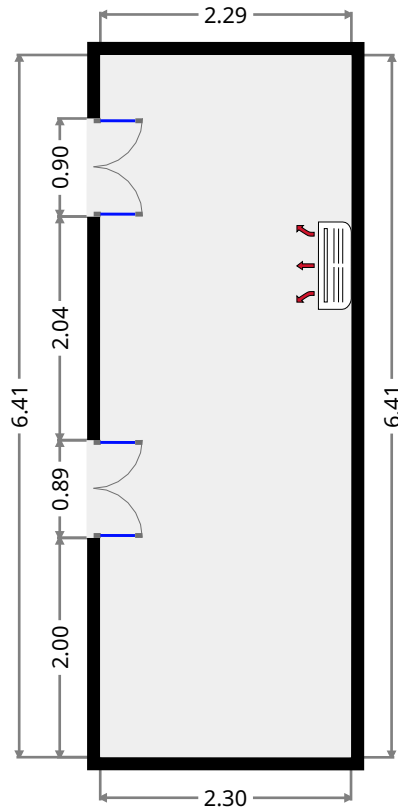
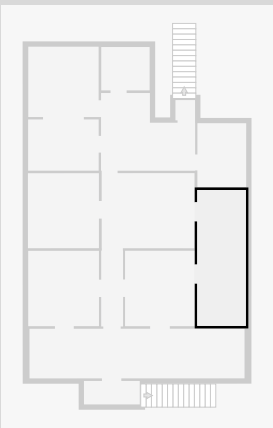
Bedroom

Width: 3.30 m
 Length: 3.56 m
 Area: 11.77 m²
 Perimeter: 13.73 m



Sleepout

Width: 2.29 m
 Length: 6.41 m
 Area: 14.69 m²
 Perimeter: 17.40 m

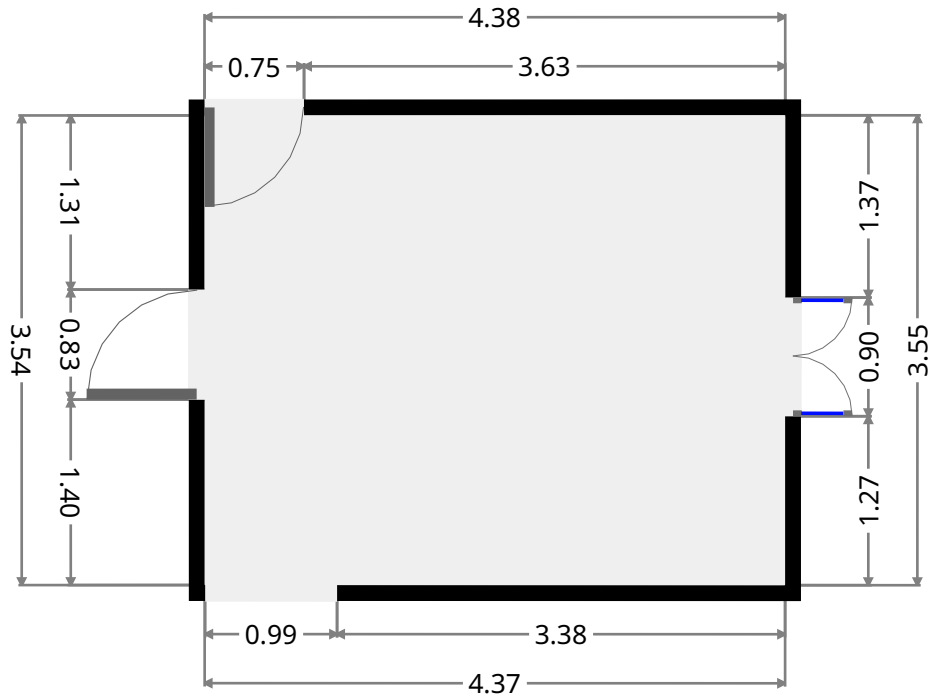
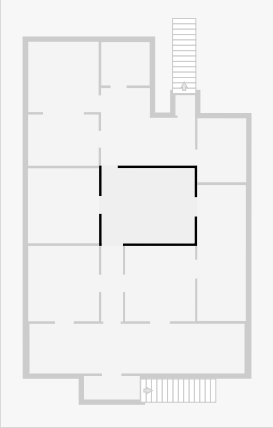


THIS FLOORPLAN IS PROVIDED WITHOUT WARRANTY OF ANY KIND. SENSOPIA DISCLAIMS ANY WARRANTY INCLUDING, WITHOUT LIMITATION, SATISFACTORY QUALITY OR ACCURACY OF DIMENSIONS.

58 Archer Street

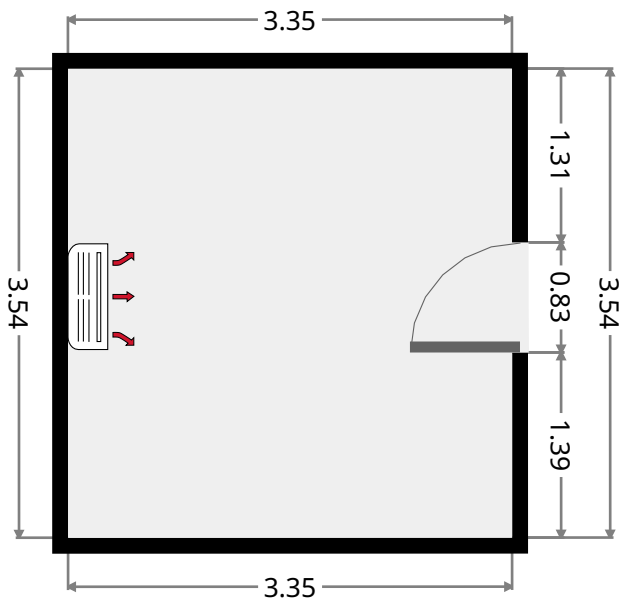
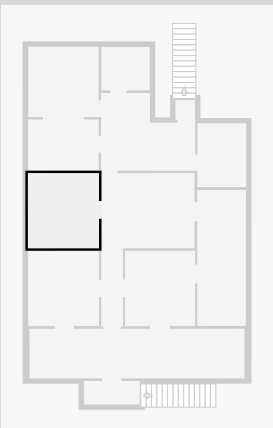
Living Room

Width: 3.55 m
 Length: 4.38 m
 Area: 15.51 m²
 Perimeter: 15.84 m

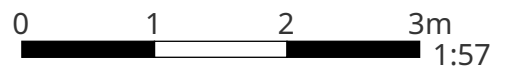


Bedroom

Width: 3.35 m
 Length: 3.54 m
 Area: 11.85 m²
 Perimeter: 13.77 m

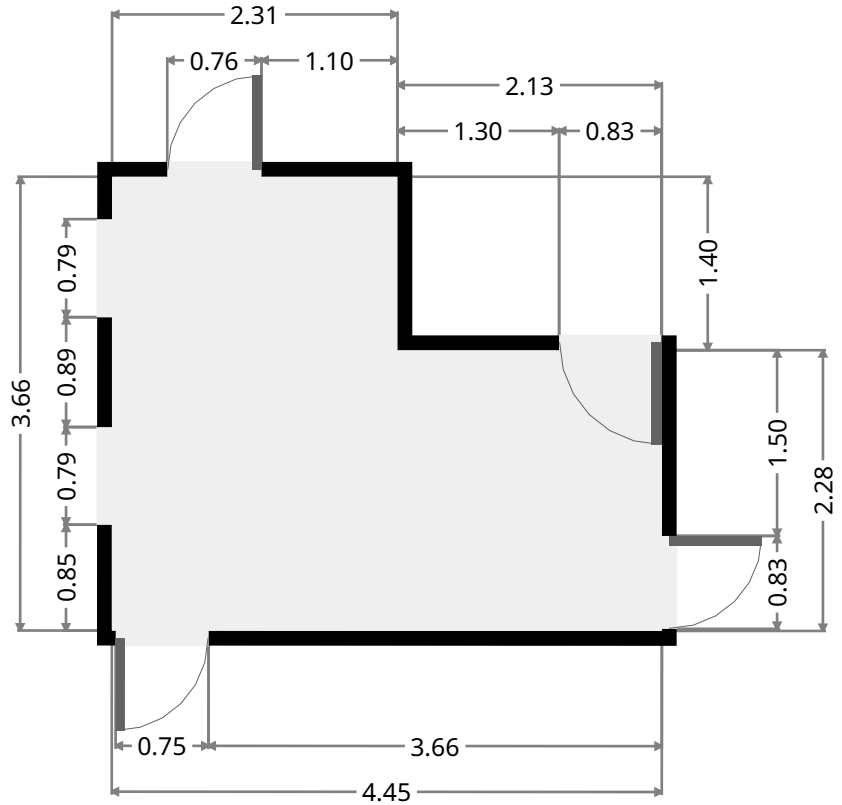
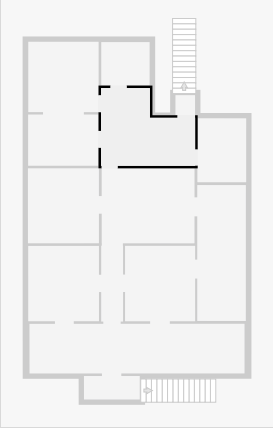


THIS FLOORPLAN IS PROVIDED WITHOUT WARRANTY OF ANY KIND. SENSOPIA DISCLAIMS ANY WARRANTY INCLUDING, WITHOUT LIMITATION, SATISFACTORY QUALITY OR ACCURACY OF DIMENSIONS.



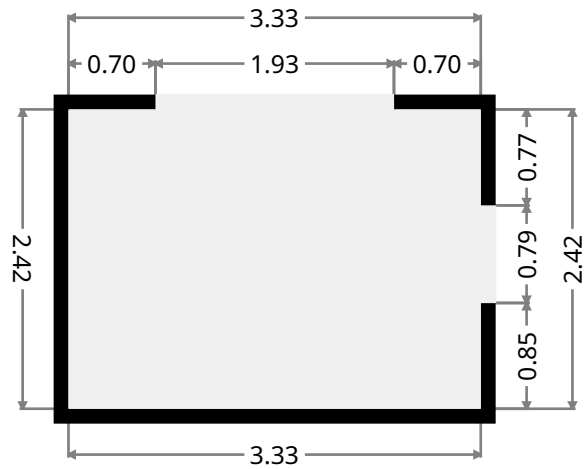
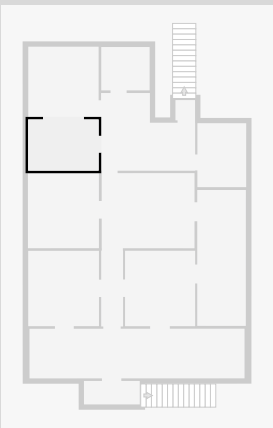
58 Archer Street

•
 Width: 3.66 m
 Length: 4.45 m
 Area: 13.28 m²
 Perimeter: 16.21 m



Dining Room

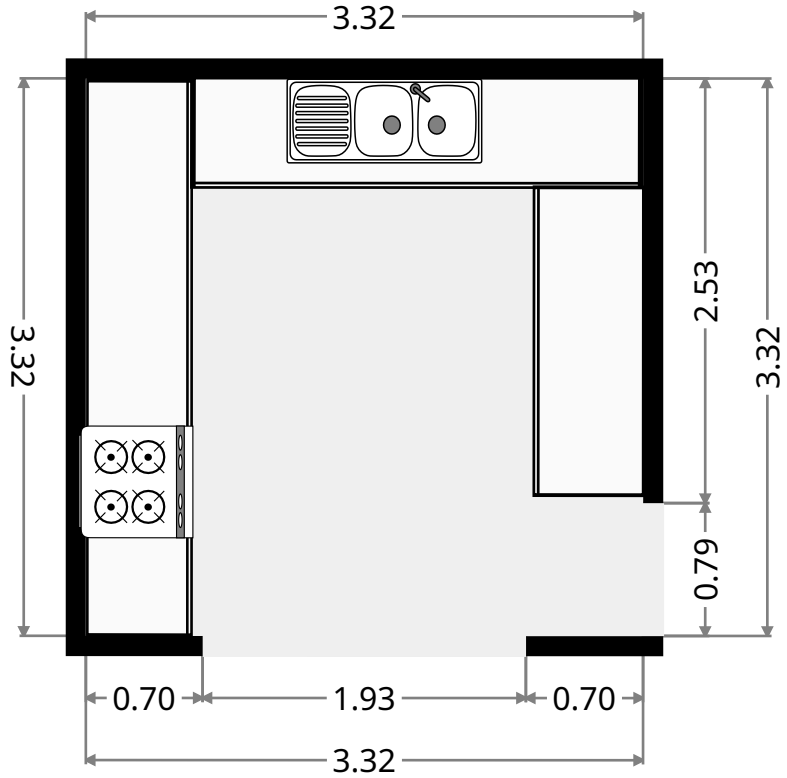
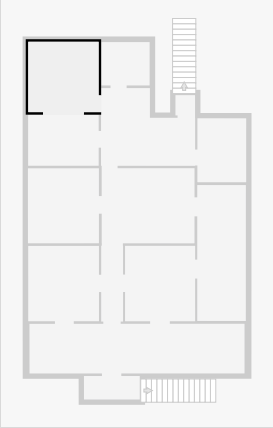
Width: 2.42 m
 Length: 3.33 m
 Area: 8.04 m²
 Perimeter: 11.49 m



58 Archer Street

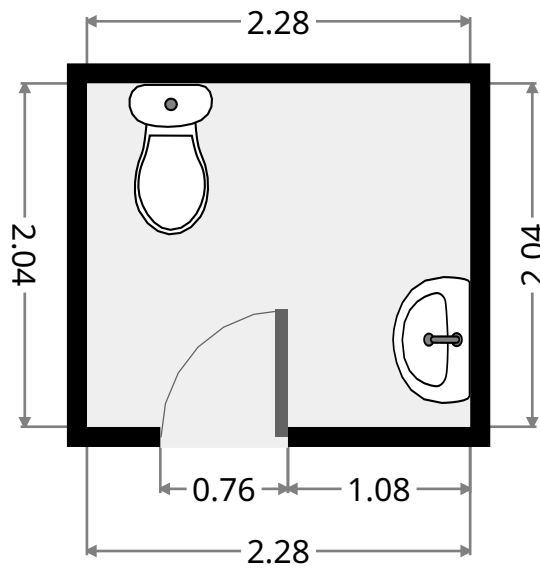
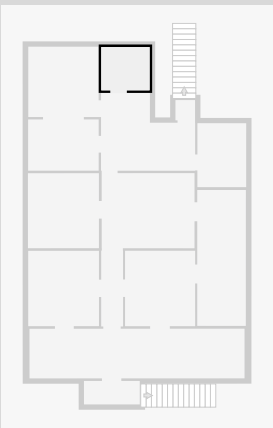
Kitchen

Width: 3.32 m
 Length: 3.32 m
 Area: 11.01 m²
 Perimeter: 13.27 m

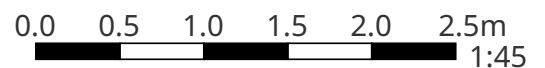


Toilet

Width: 2.04 m
 Length: 2.28 m
 Area: 4.66 m²
 Perimeter: 8.65 m



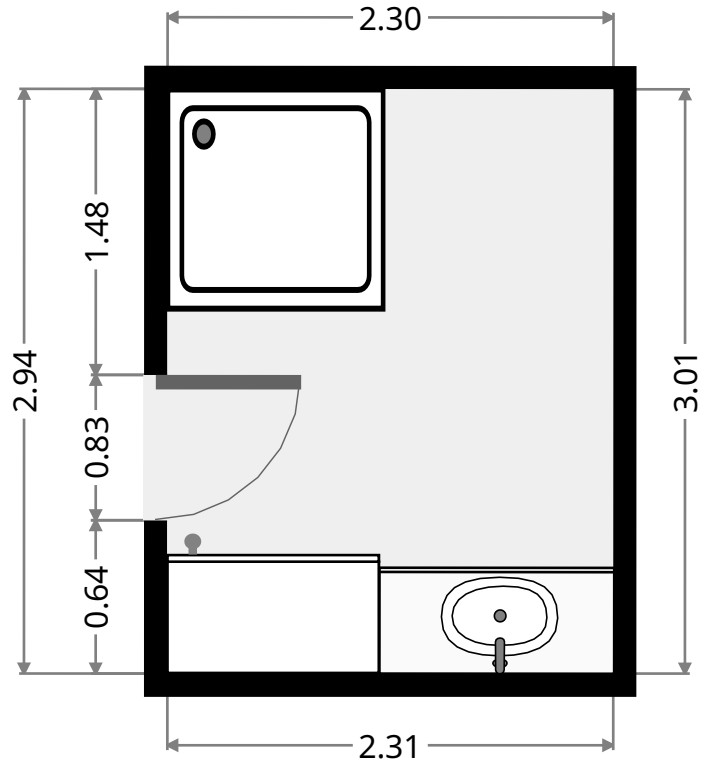
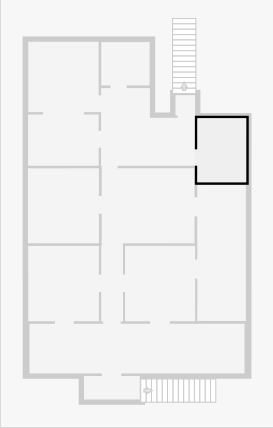
THIS FLOORPLAN IS PROVIDED WITHOUT WARRANTY OF ANY KIND. SENSOPIA DISCLAIMS ANY WARRANTY INCLUDING, WITHOUT LIMITATION, SATISFACTORY QUALITY OR ACCURACY OF DIMENSIONS.



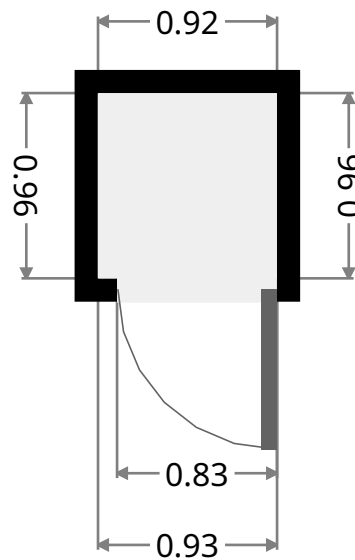
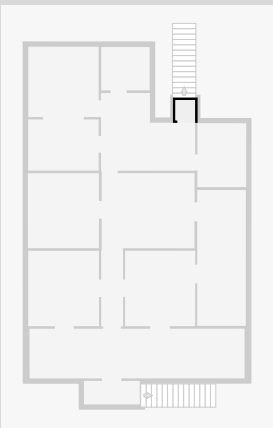
58 Archer Street

Bathroom

Width: 2.30 m
 Length: 3.01 m
 Area: 6.94 m²
 Perimeter: 10.63 m



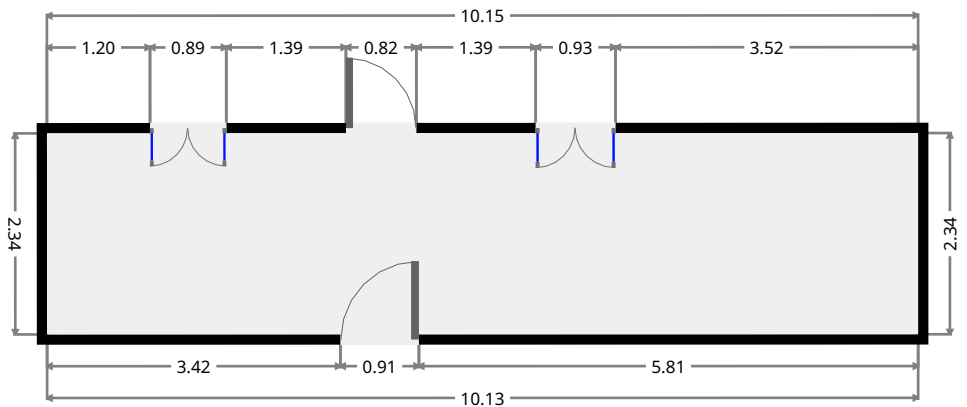
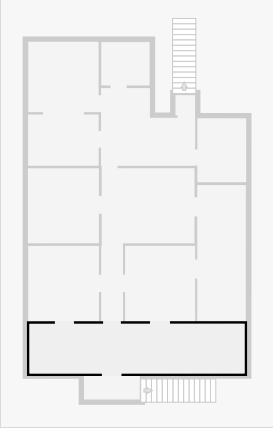
•
 Width: 0.92 m
 Length: 0.96 m
 Area: 0.88 m²
 Perimeter: 3.76 m



58 Archer Street

Front Verandah

Width: 2.34 m
Length: 10.15 m
Area: 23.76 m²
Perimeter: 24.97 m



THIS FLOORPLAN IS PROVIDED WITHOUT WARRANTY OF ANY KIND. SENSOPIA DISCLAIMS ANY WARRANTY INCLUDING, WITHOUT LIMITATION, SATISFACTORY QUALITY OR ACCURACY OF DIMENSIONS.



58 Archer Street

Entry

Width: 1.11 m
Length: 2.63 m
Area: 2.92 m²
Perimeter: 7.48 m

