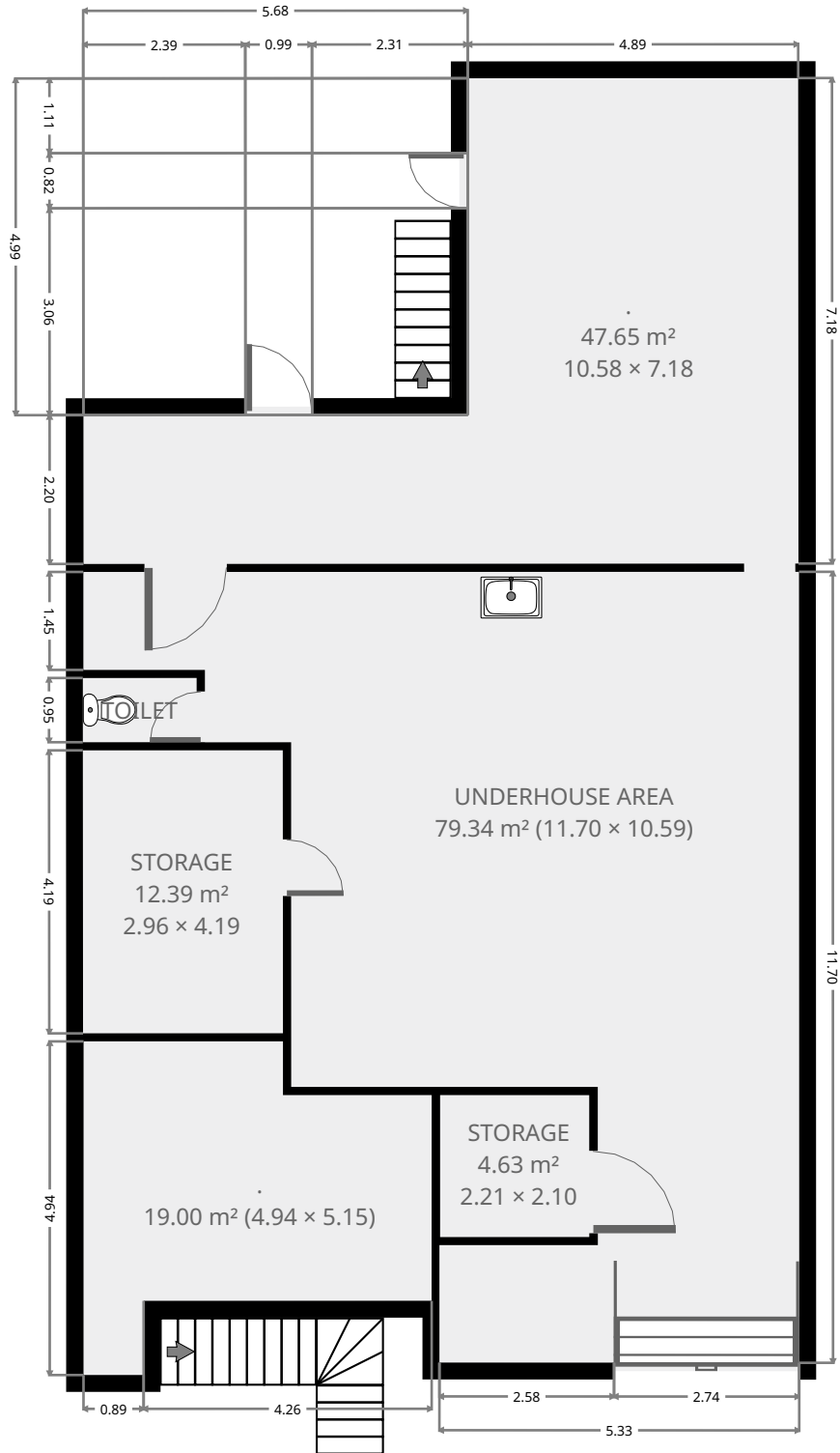


289 Hook Street

Ground Floor

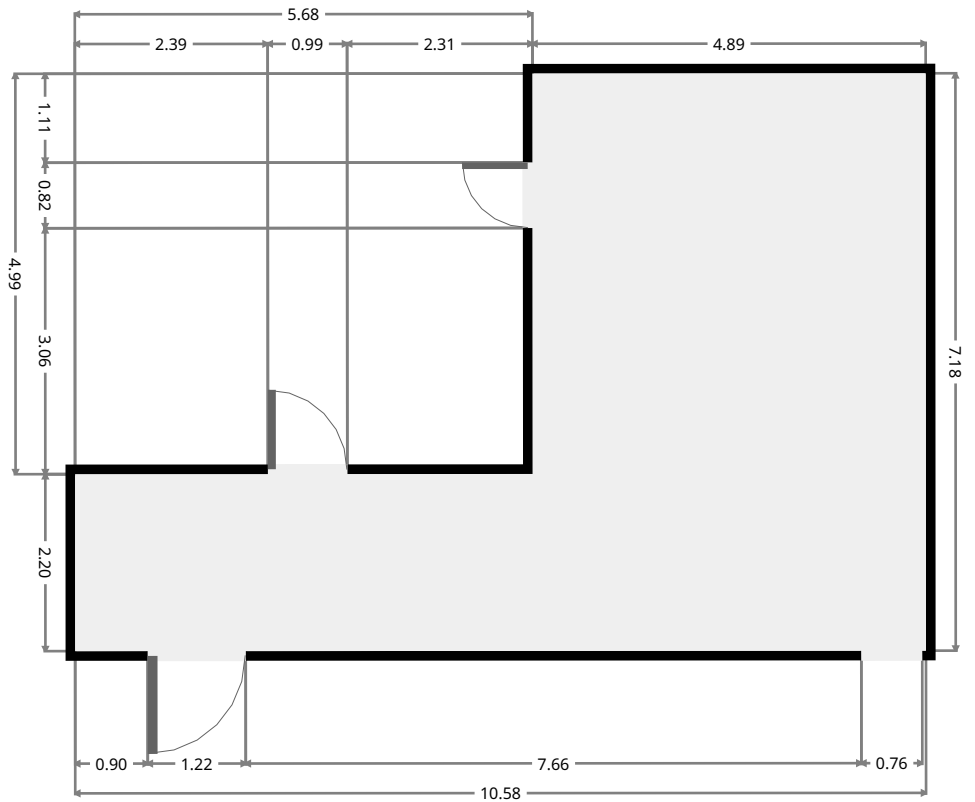
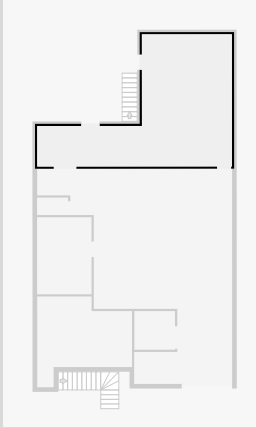


THIS FLOORPLAN IS PROVIDED WITHOUT WARRANTY OF ANY KIND. SENSOPIA DISCLAIMS ANY WARRANTY INCLUDING, WITHOUT LIMITATION, SATISFACTORY QUALITY OR ACCURACY OF DIMENSIONS.



289 Hook Street

•
Width: 7.18 m
Length: 10.58 m
Area: 47.65 m²
Perimeter: 35.53 m



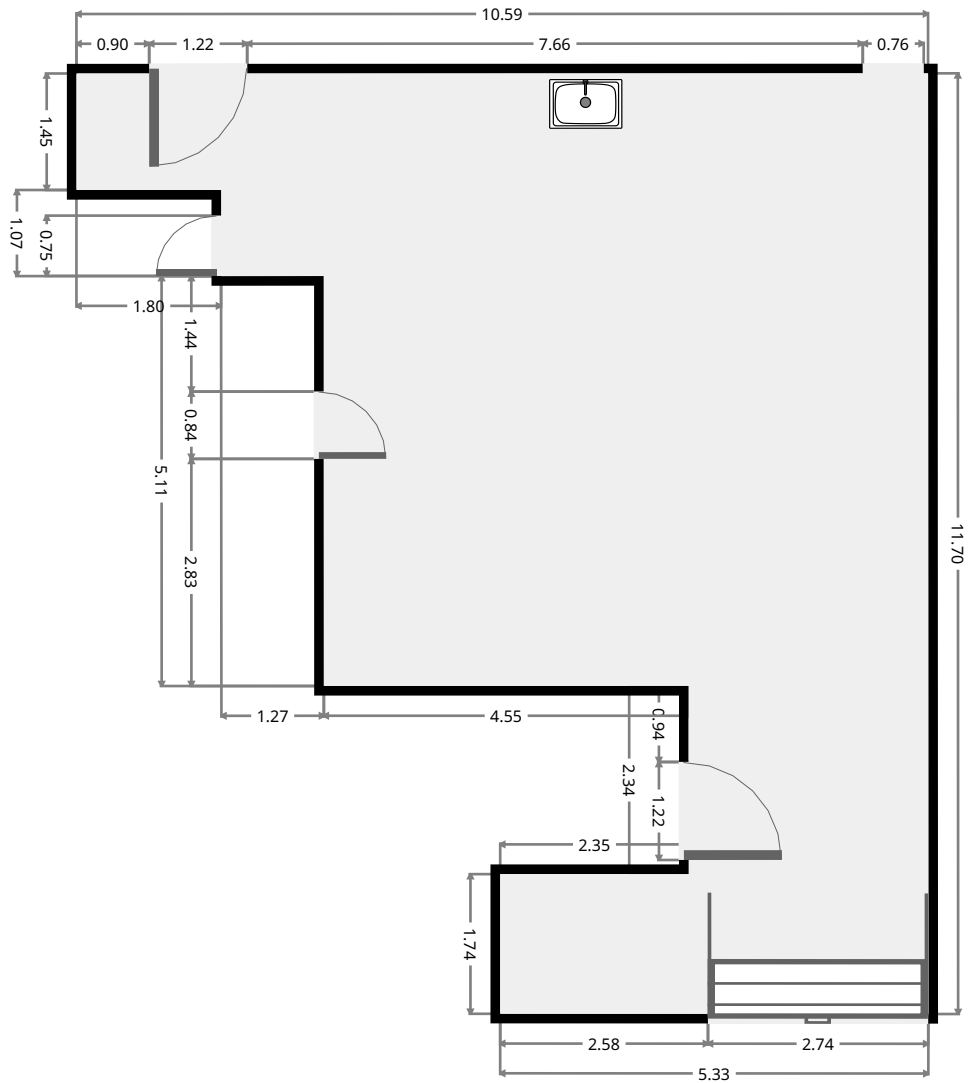
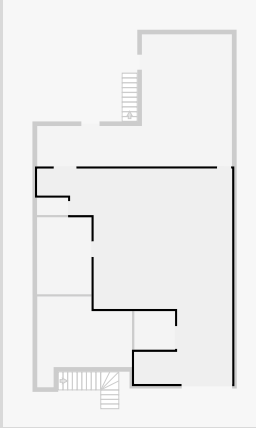
THIS FLOORPLAN IS PROVIDED WITHOUT WARRANTY OF ANY KIND. SENSOPIA DISCLAIMS ANY WARRANTY INCLUDING, WITHOUT LIMITATION, SATISFACTORY QUALITY OR ACCURACY OF DIMENSIONS.



289 Hook Street

Underhouse Area

Width: 10.59 m
Length: 11.70 m
Area: 79.34 m²
Perimeter: 49.27 m



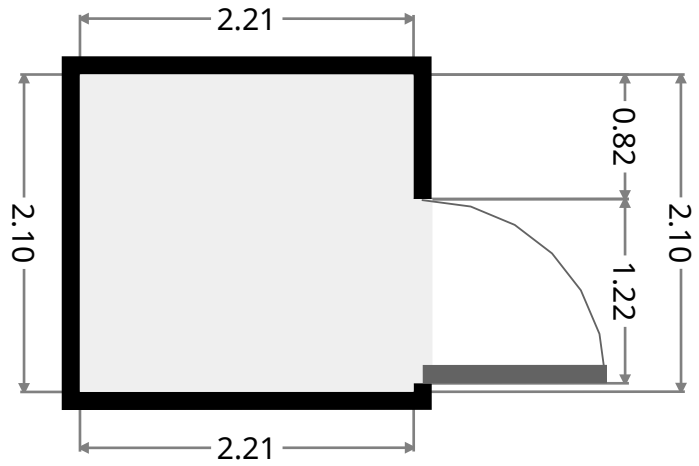
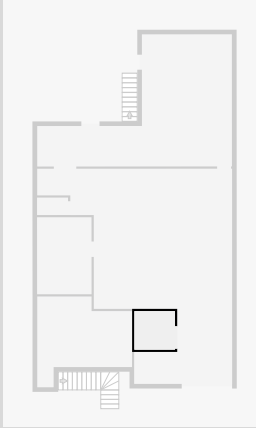
THIS FLOORPLAN IS PROVIDED WITHOUT WARRANTY OF ANY KIND. SENSOPIA DISCLAIMS ANY WARRANTY INCLUDING, WITHOUT LIMITATION, SATISFACTORY QUALITY OR ACCURACY OF DIMENSIONS.



289 Hook Street

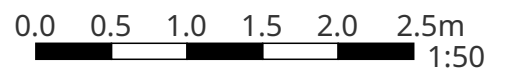
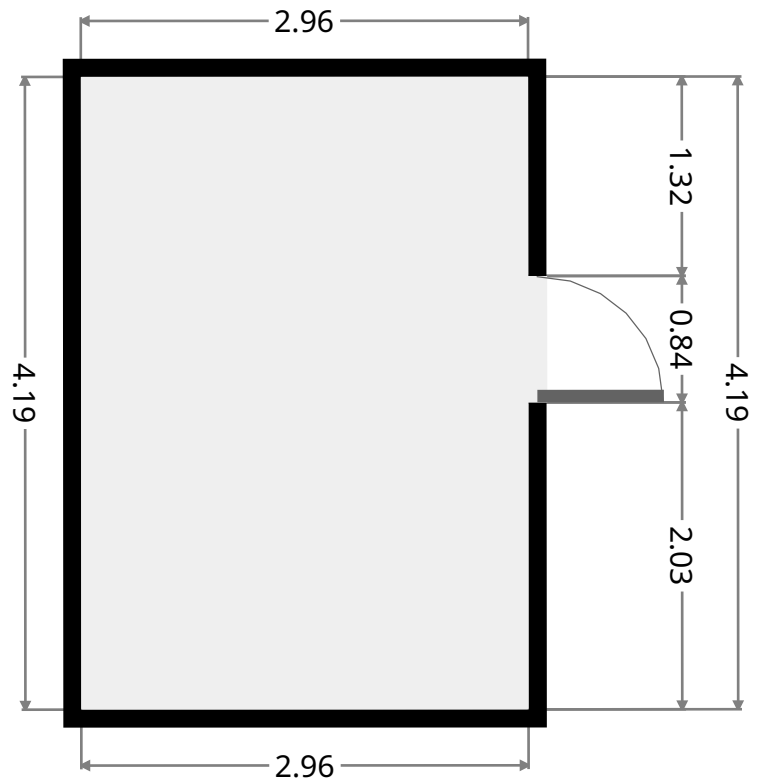
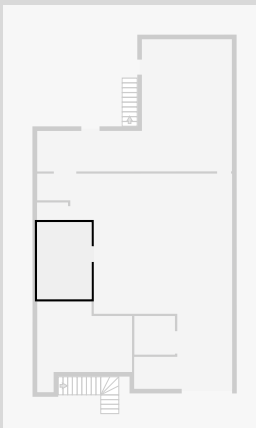
Storage

Width: 2.10 m
Length: 2.21 m
Area: 4.63 m²
Perimeter: 8.61 m



Storage

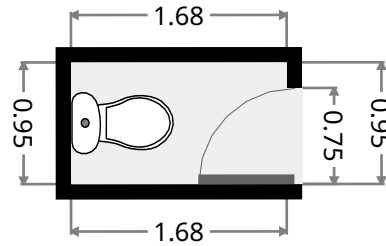
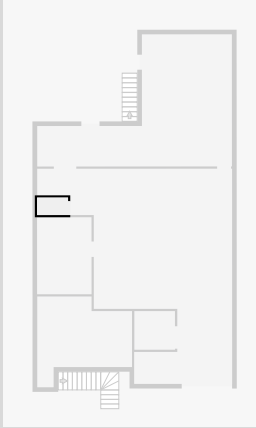
Width: 2.96 m
Length: 4.19 m
Area: 12.39 m²
Perimeter: 14.29 m



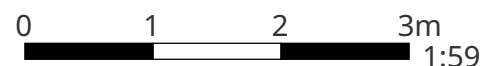
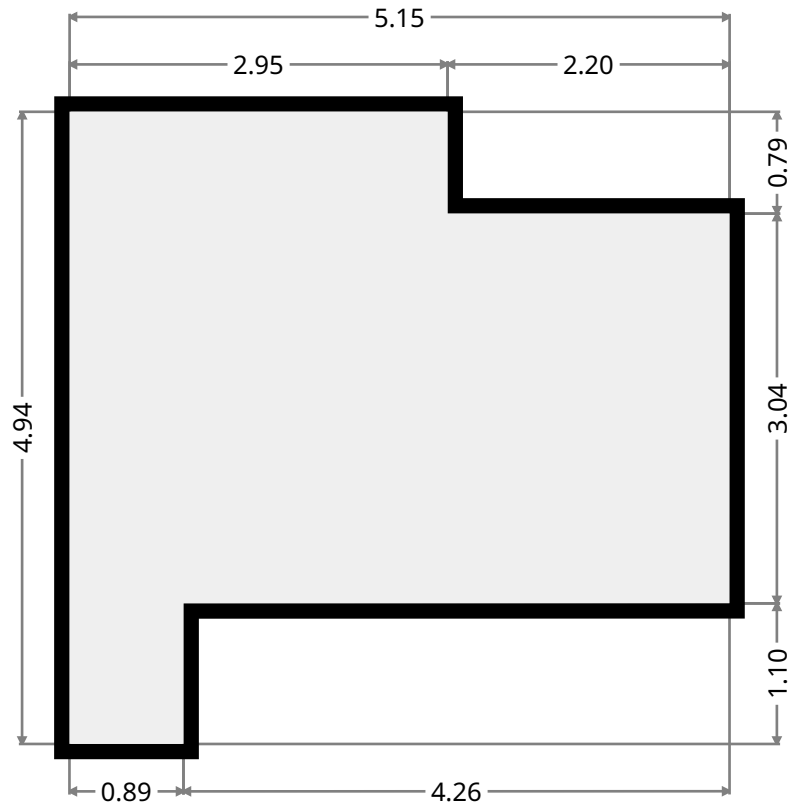
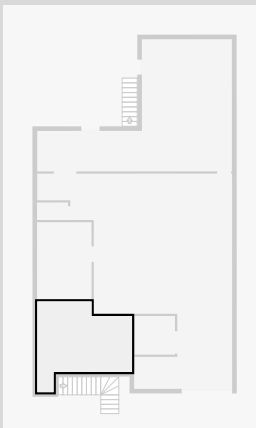
289 Hook Street

Toilet

Width: 0.95 m
Length: 1.68 m
Area: 1.60 m²
Perimeter: 5.27 m



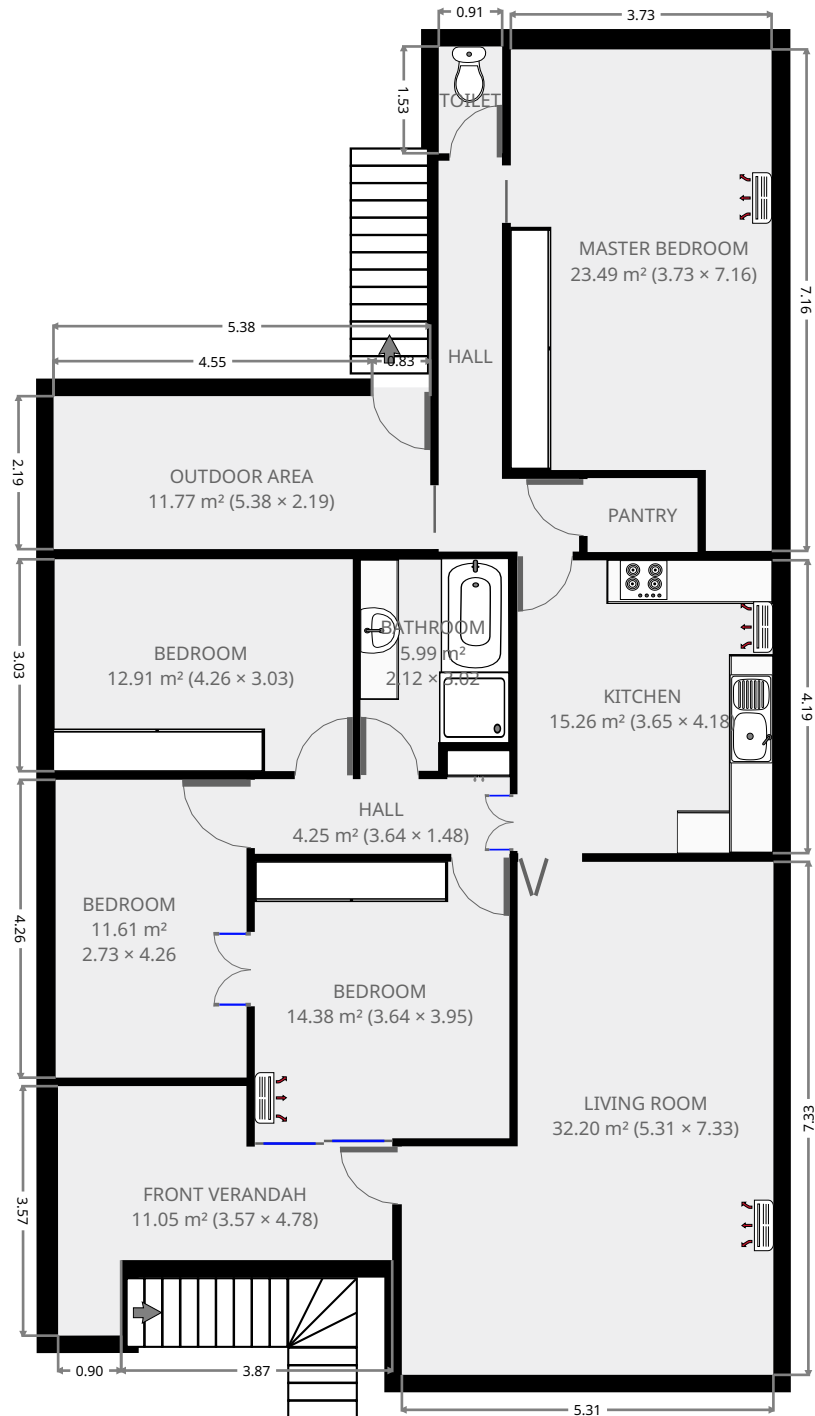
•
Width: 4.94 m
Length: 5.15 m
Area: 19.00 m²
Perimeter: 20.18 m



THIS FLOORPLAN IS PROVIDED WITHOUT WARRANTY OF ANY KIND. SENSOPIA DISCLAIMS ANY WARRANTY INCLUDING, WITHOUT LIMITATION, SATISFACTORY QUALITY OR ACCURACY OF DIMENSIONS.

289 Hook Street

1st Floor



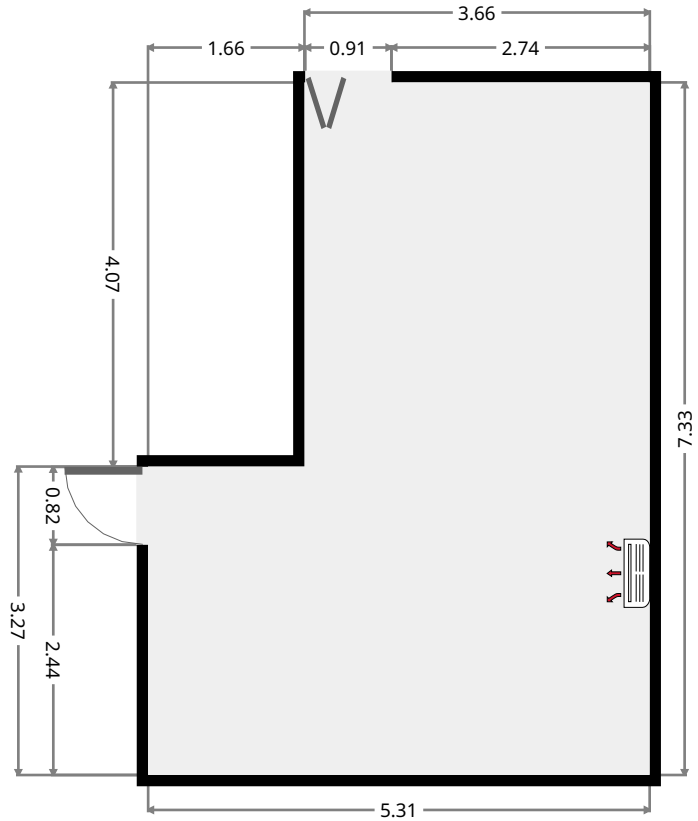
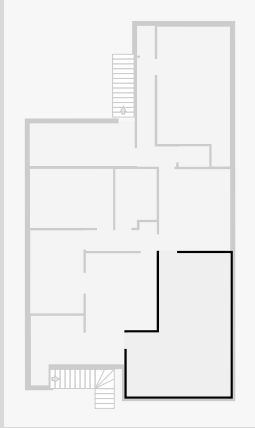
THIS FLOORPLAN IS PROVIDED WITHOUT WARRANTY OF ANY KIND. SENSOPIA DISCLAIMS ANY WARRANTY INCLUDING, WITHOUT LIMITATION, SATISFACTORY QUALITY OR ACCURACY OF DIMENSIONS.



289 Hook Street

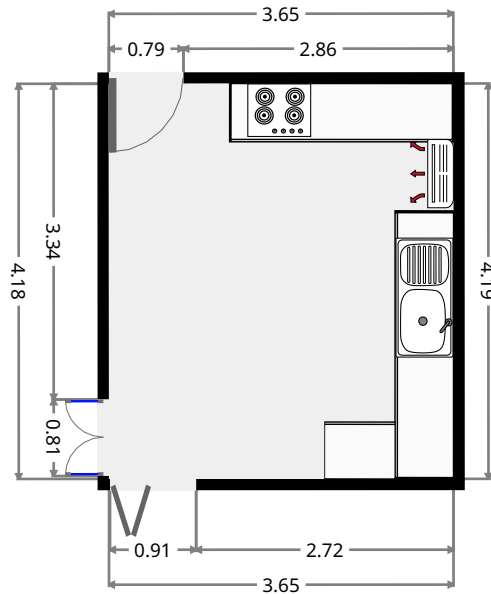
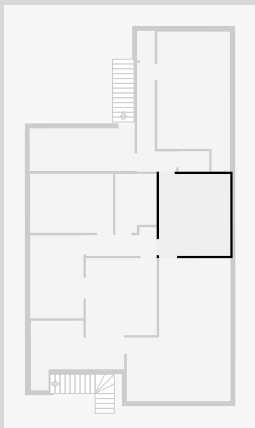
Living Room

Width: 5.31 m
Length: 7.33 m
Area: 32.20 m²
Perimeter: 25.28 m



Kitchen

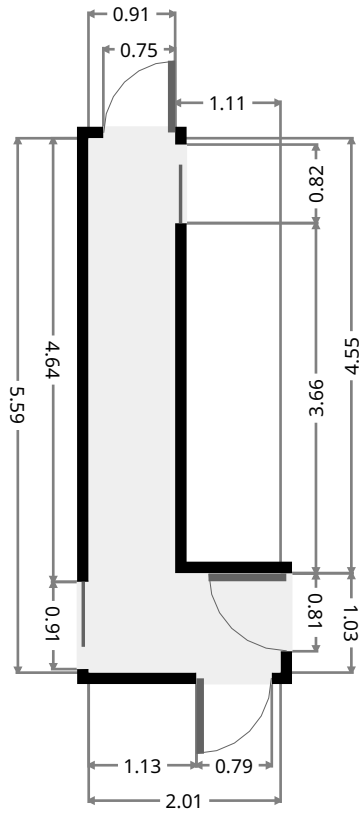
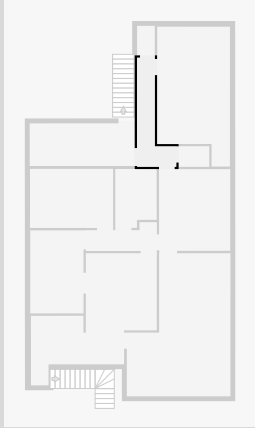
Width: 3.65 m
Length: 4.18 m
Area: 15.26 m²
Perimeter: 15.66 m



289 Hook Street

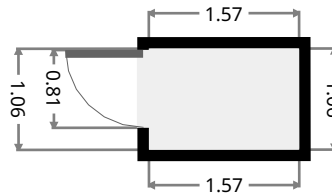
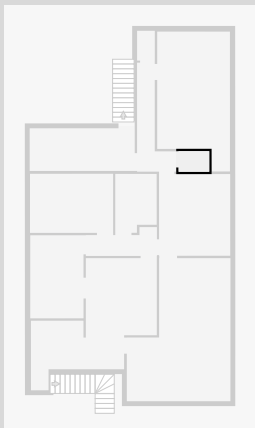
Hall

Width: 2.01 m
Length: 5.59 m
Area: 6.20 m²
Perimeter: 15.19 m



Pantry

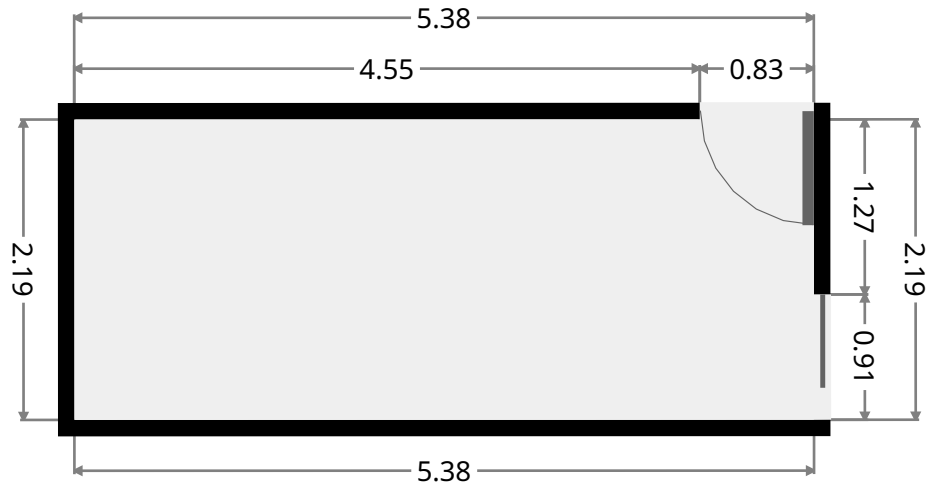
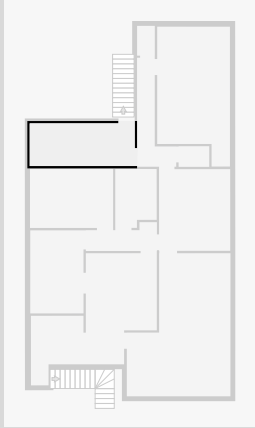
Width: 1.06 m
Length: 1.57 m
Area: 1.66 m²
Perimeter: 5.26 m



289 Hook Street

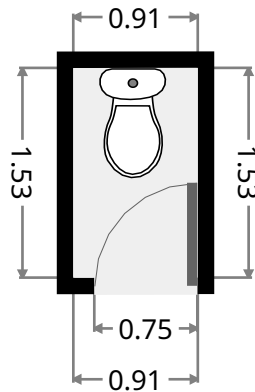
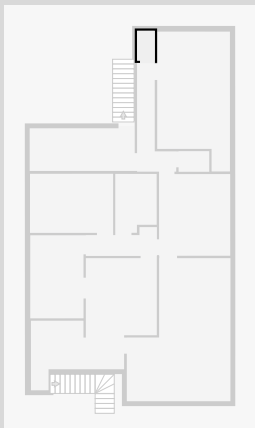
Outdoor Area

Width: 2.19 m
Length: 5.38 m
Area: 11.77 m²
Perimeter: 15.14 m



Toilet

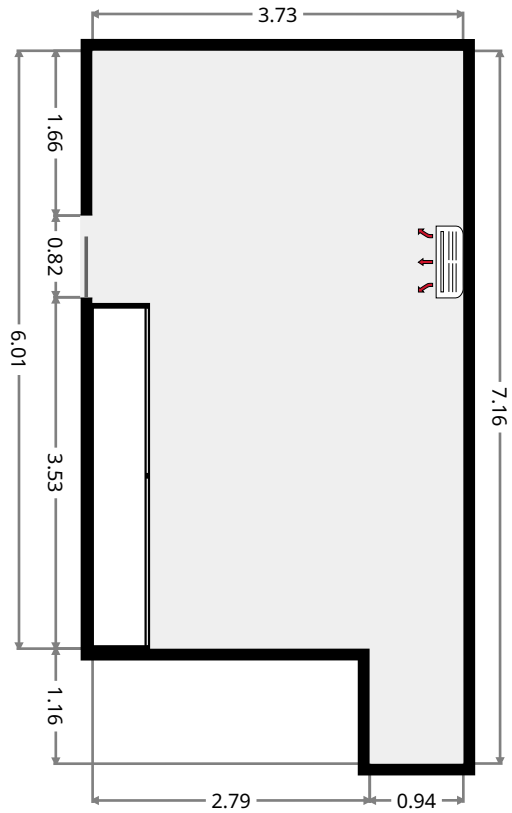
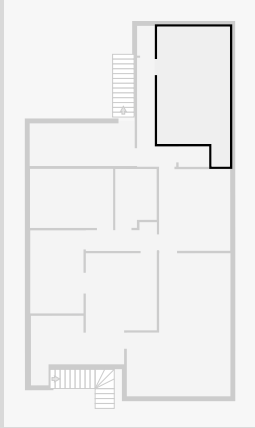
Width: 0.91 m
Length: 1.53 m
Area: 1.38 m²
Perimeter: 4.86 m



289 Hook Street

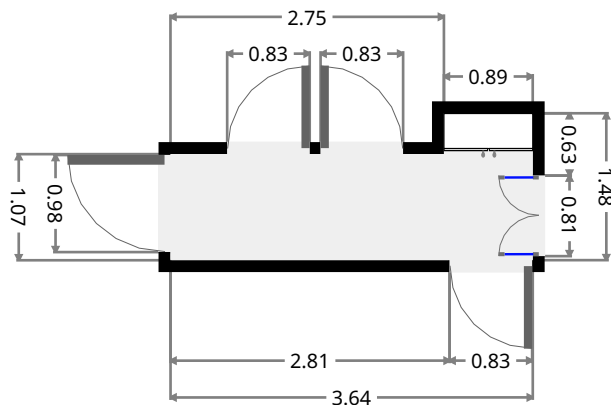
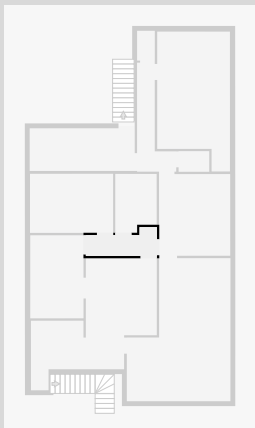
Master Bedroom

Width: 3.73 m
 Length: 7.16 m
 Area: 23.49 m²
 Perimeter: 21.79 m



Hall

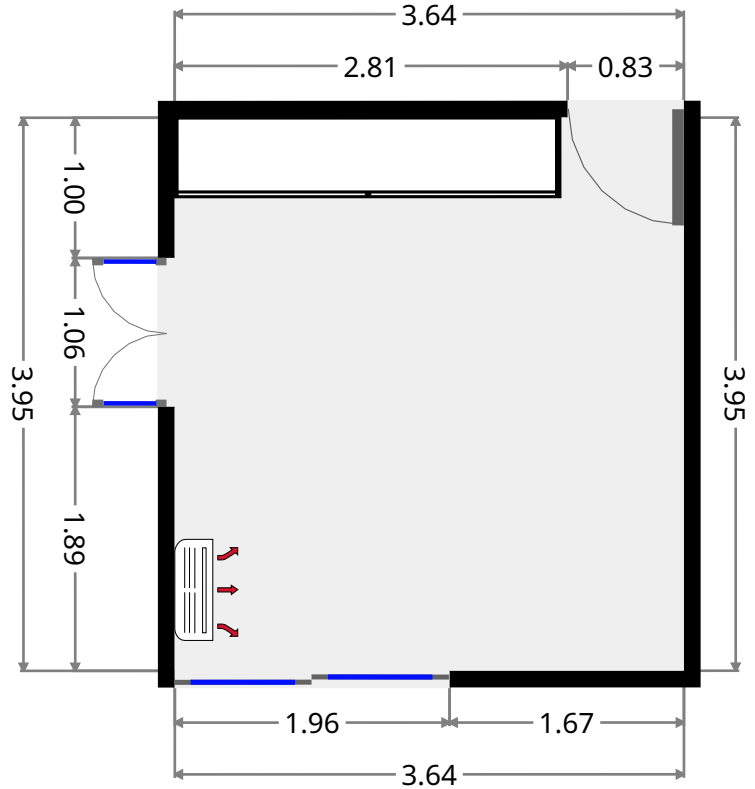
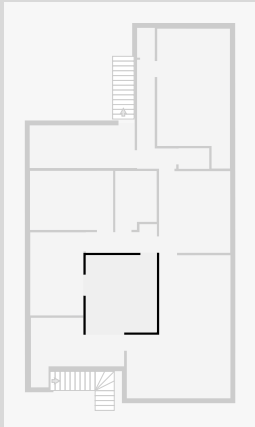
Width: 1.48 m
 Length: 3.64 m
 Area: 4.25 m²
 Perimeter: 10.24 m



289 Hook Street

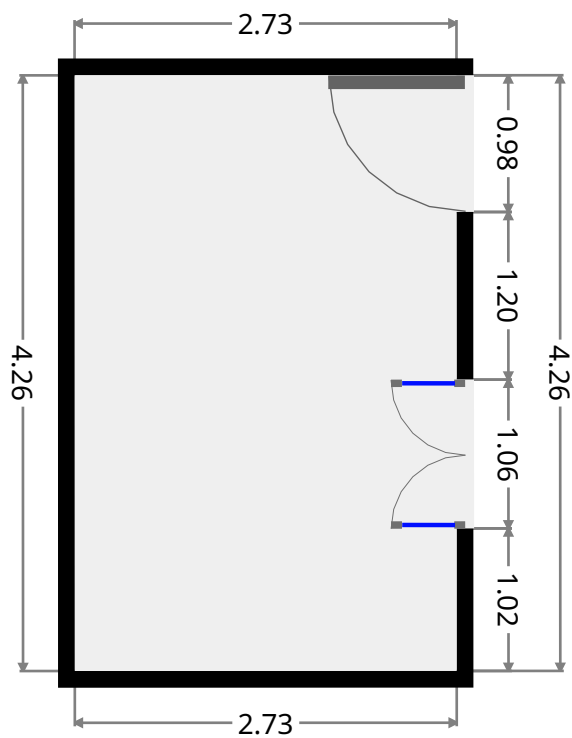
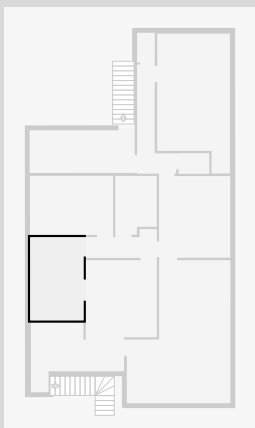
Bedroom

Width: 3.64 m
 Length: 3.95 m
 Area: 14.38 m²
 Perimeter: 15.18 m



Bedroom

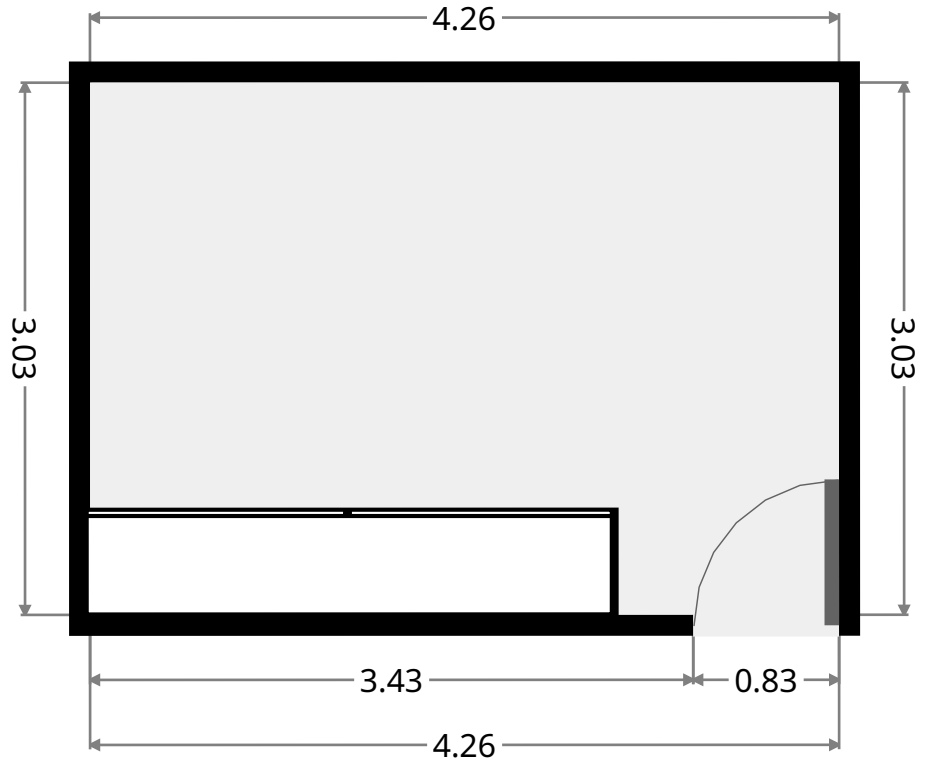
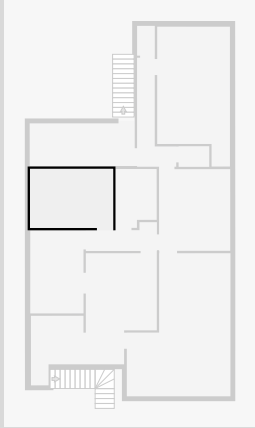
Width: 2.73 m
 Length: 4.26 m
 Area: 11.61 m²
 Perimeter: 13.97 m



289 Hook Street

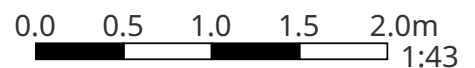
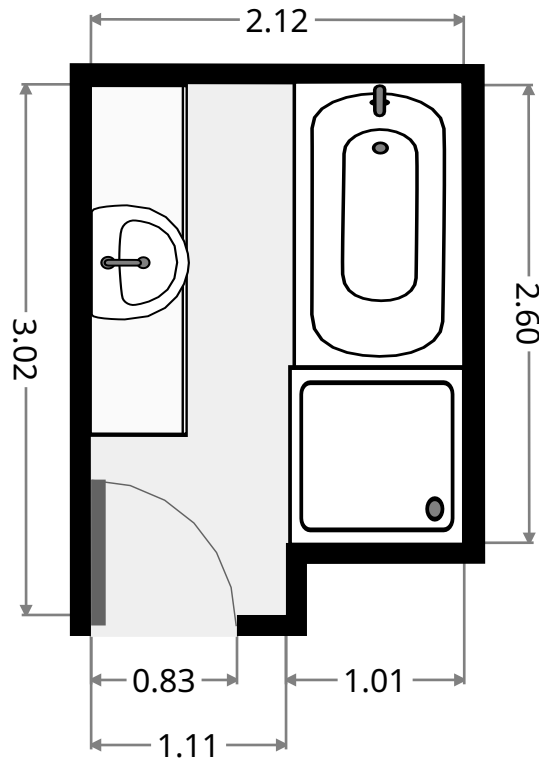
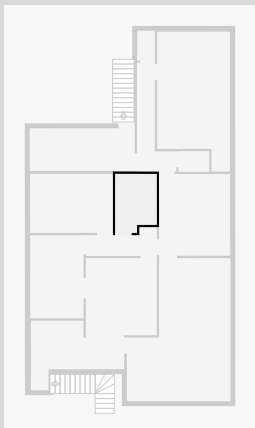
Bedroom

Width: 3.03 m
Length: 4.26 m
Area: 12.91 m²
Perimeter: 14.58 m



Bathroom

Width: 2.12 m
Length: 3.02 m
Area: 5.99 m²
Perimeter: 10.28 m



THIS FLOORPLAN IS PROVIDED WITHOUT WARRANTY OF ANY KIND. SENSOPIA DISCLAIMS ANY WARRANTY INCLUDING, WITHOUT LIMITATION, SATISFACTORY QUALITY OR ACCURACY OF DIMENSIONS.

289 Hook Street

Front Verandah

Width: 3.57 m
Length: 4.78 m
Area: 11.05 m²
Perimeter: 16.68 m

