

# 25 Tawarra Crescent

## Ground Floor



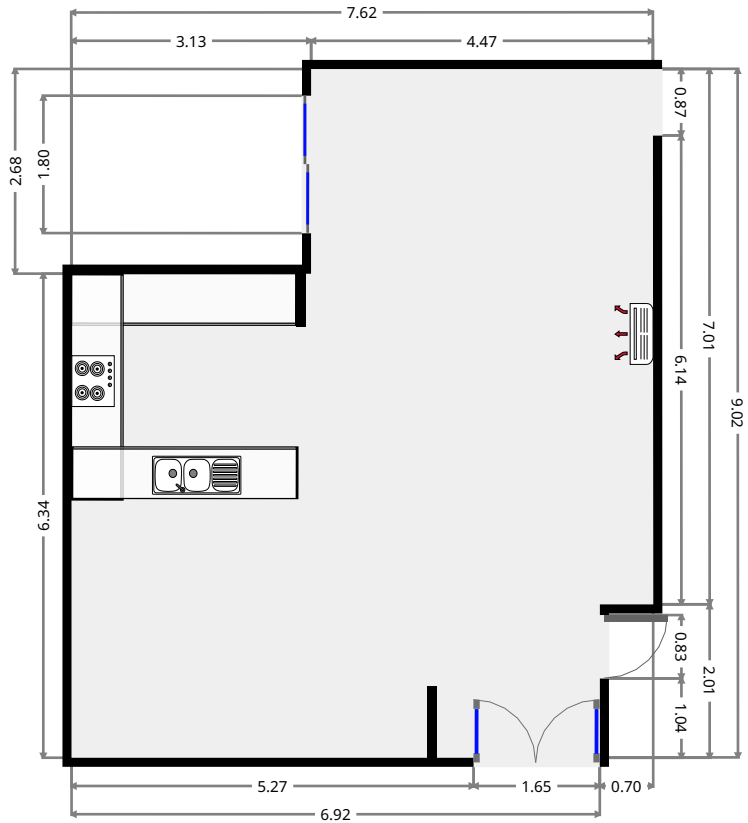
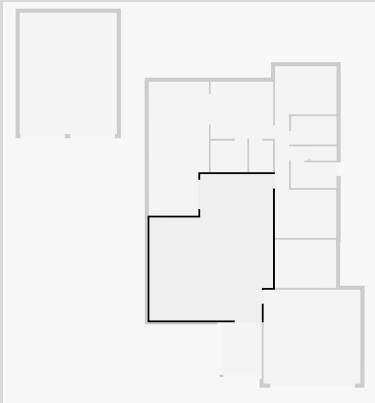
THIS FLOORPLAN IS PROVIDED WITHOUT WARRANTY OF ANY KIND. SENSOPIA DISCLAIMS ANY WARRANTY INCLUDING, WITHOUT LIMITATION, SATISFACTORY QUALITY OR ACCURACY OF DIMENSIONS.

0 2 4 6m  
1:139

# 25 Tawarra Crescent

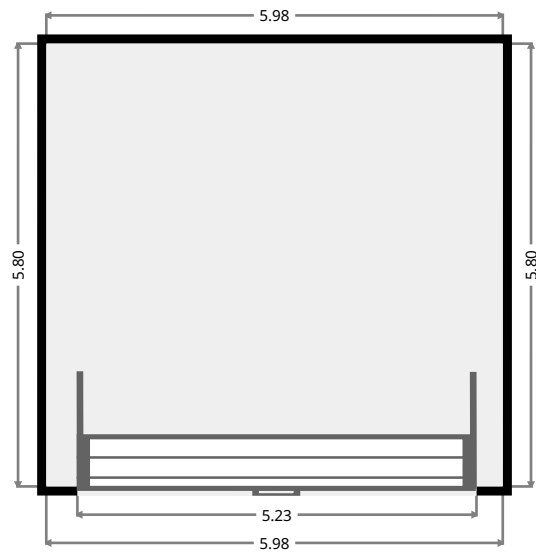
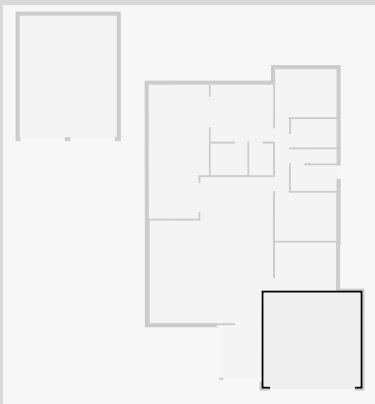
## Living/Kitchen/Dining

Width: 7.62 m  
 Length: 9.02 m  
 Area: 58.90 m<sup>2</sup>  
 Perimeter: 33.28 m

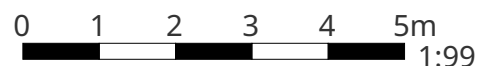


## Garage

Width: 5.80 m  
 Length: 5.98 m  
 Area: 34.68 m<sup>2</sup>  
 Perimeter: 23.56 m



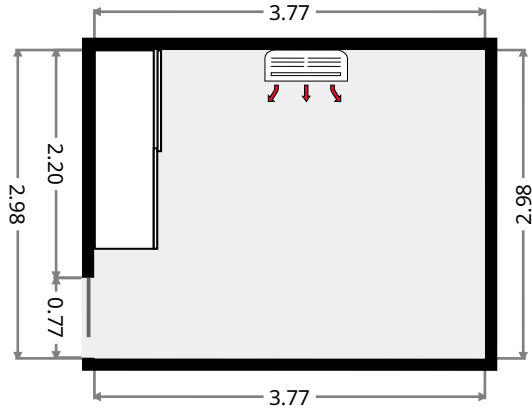
THIS FLOORPLAN IS PROVIDED WITHOUT WARRANTY OF ANY KIND. SENSOPIA DISCLAIMS ANY WARRANTY INCLUDING, WITHOUT LIMITATION, SATISFACTORY QUALITY OR ACCURACY OF DIMENSIONS.



# 25 Tawarra Crescent

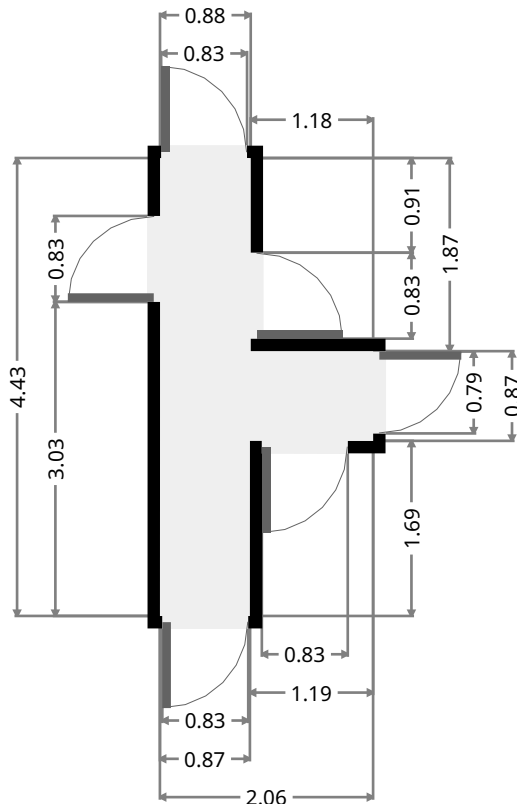
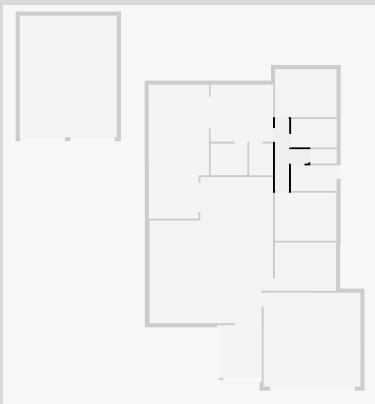
## Bedroom

Width: 2.98 m  
 Length: 3.77 m  
 Area: 11.23 m<sup>2</sup>  
 Perimeter: 13.50 m



## Hall

Width: 2.06 m  
 Length: 4.42 m  
 Area: 4.89 m<sup>2</sup>  
 Perimeter: 12.97 m

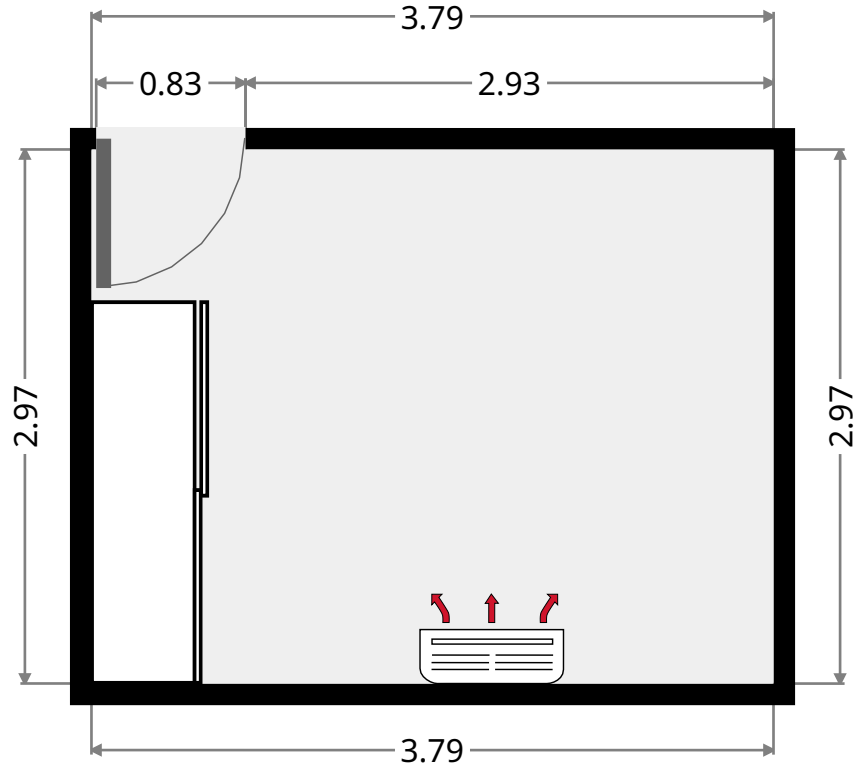
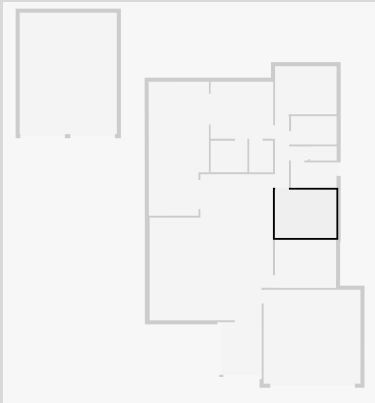


THIS FLOORPLAN IS PROVIDED WITHOUT WARRANTY OF ANY KIND. SENSOPIA DISCLAIMS ANY WARRANTY INCLUDING, WITHOUT LIMITATION, SATISFACTORY QUALITY OR ACCURACY OF DIMENSIONS.

# 25 Tawarra Crescent

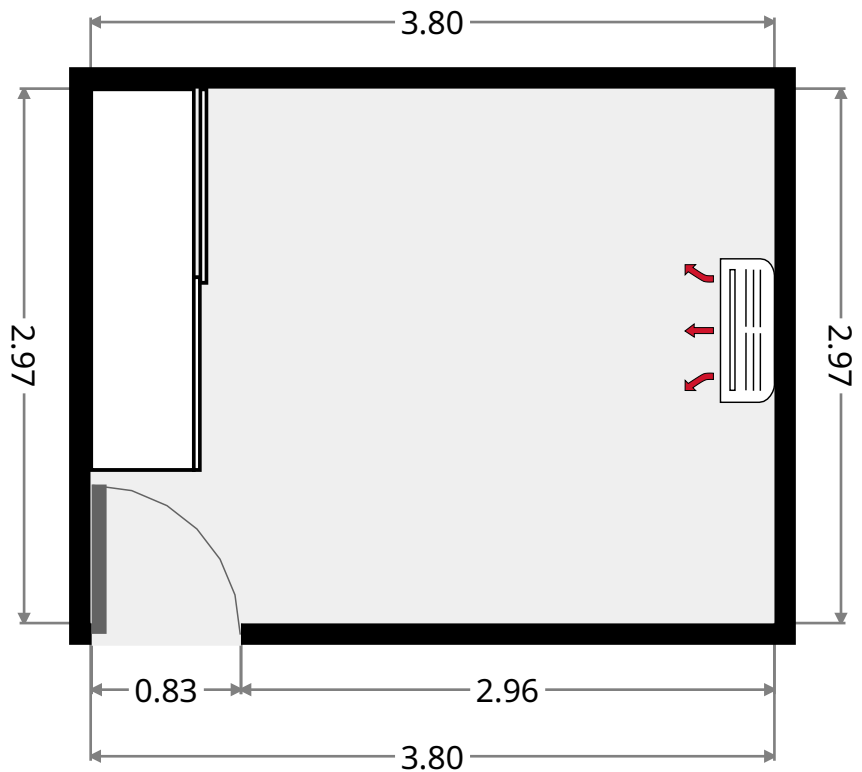
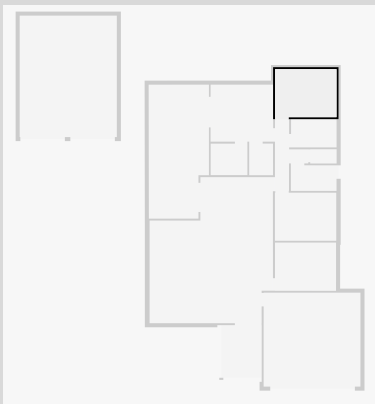
## Bedroom

Width: 2.97 m  
 Length: 3.79 m  
 Area: 11.25 m<sup>2</sup>  
 Perimeter: 13.52 m

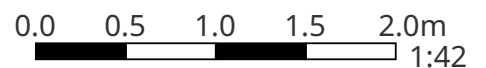


## Bedroom

Width: 2.97 m  
 Length: 3.80 m  
 Area: 11.29 m<sup>2</sup>  
 Perimeter: 13.54 m



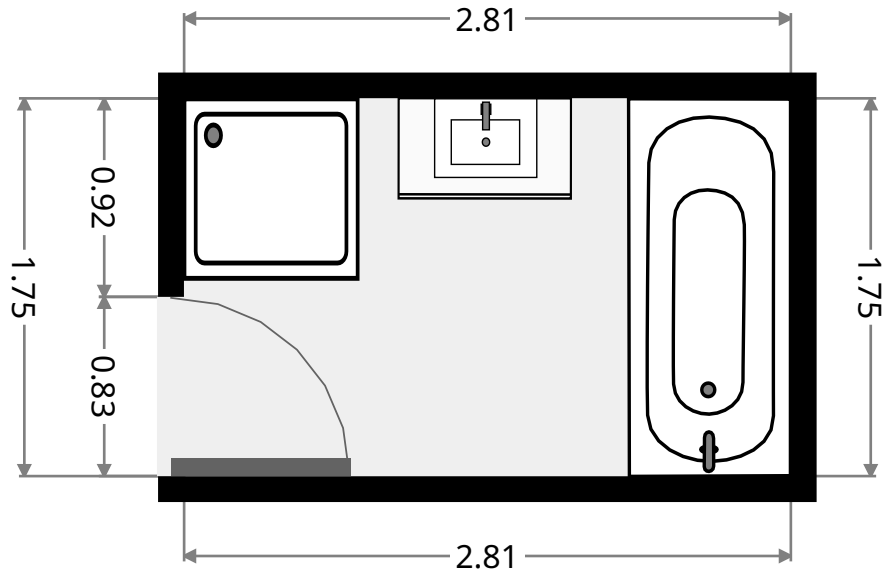
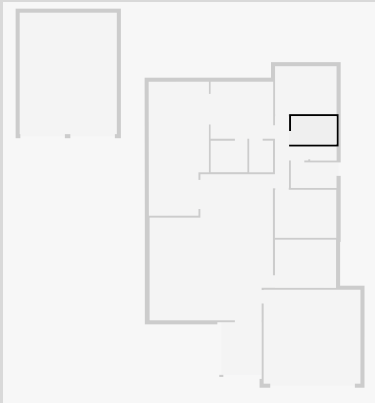
THIS FLOORPLAN IS PROVIDED WITHOUT WARRANTY OF ANY KIND. SENSOPIA DISCLAIMS ANY WARRANTY INCLUDING, WITHOUT LIMITATION, SATISFACTORY QUALITY OR ACCURACY OF DIMENSIONS.



# 25 Tawarra Crescent

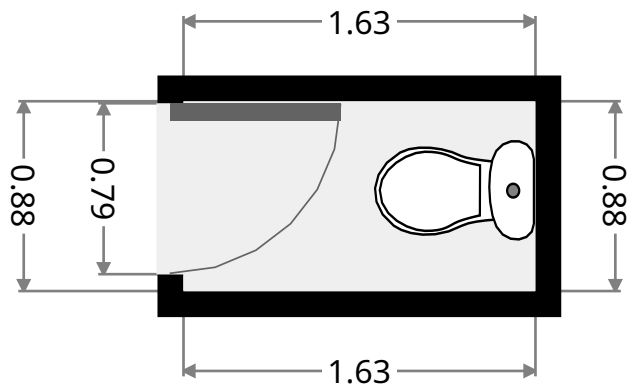
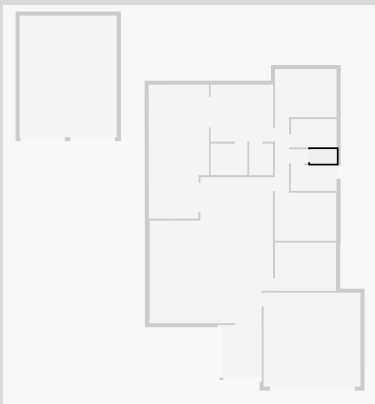
## Bathroom

Width: 1.75 m  
Length: 2.81 m  
Area: 4.92 m<sup>2</sup>  
Perimeter: 9.12 m



## Toilet

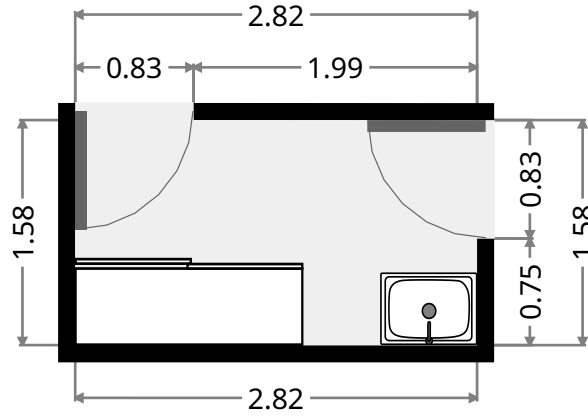
Width: 0.88 m  
Length: 1.63 m  
Area: 1.43 m<sup>2</sup>  
Perimeter: 5.02 m



# 25 Tawarra Crescent

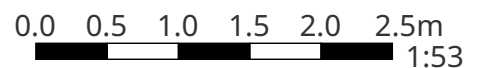
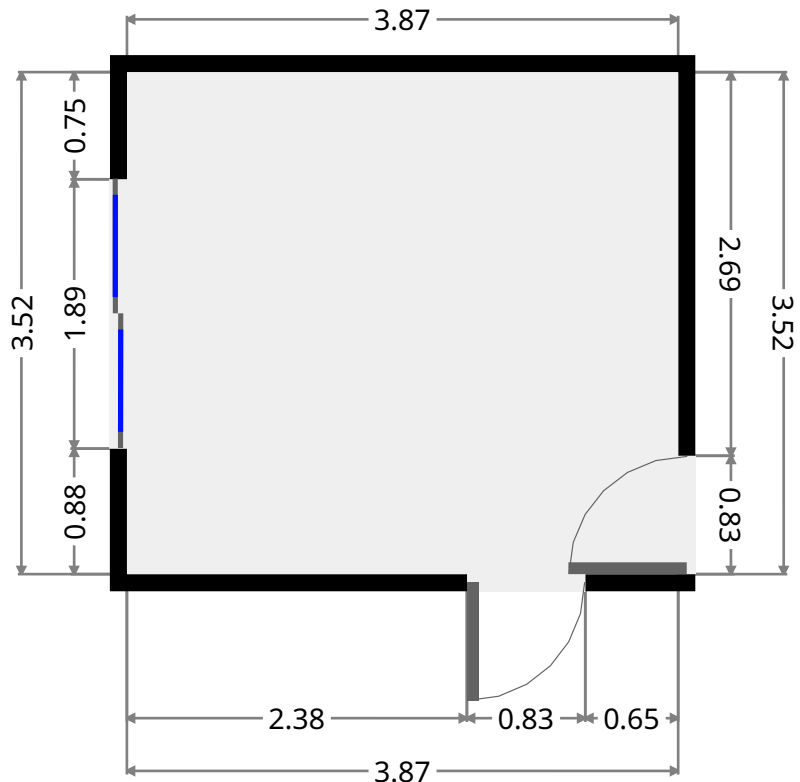
## Laundry Room

Width: 1.58 m  
 Length: 2.82 m  
 Area: 4.45 m<sup>2</sup>  
 Perimeter: 8.79 m



## Master Bedroom

Width: 3.52 m  
 Length: 3.87 m  
 Area: 13.61 m<sup>2</sup>  
 Perimeter: 14.77 m

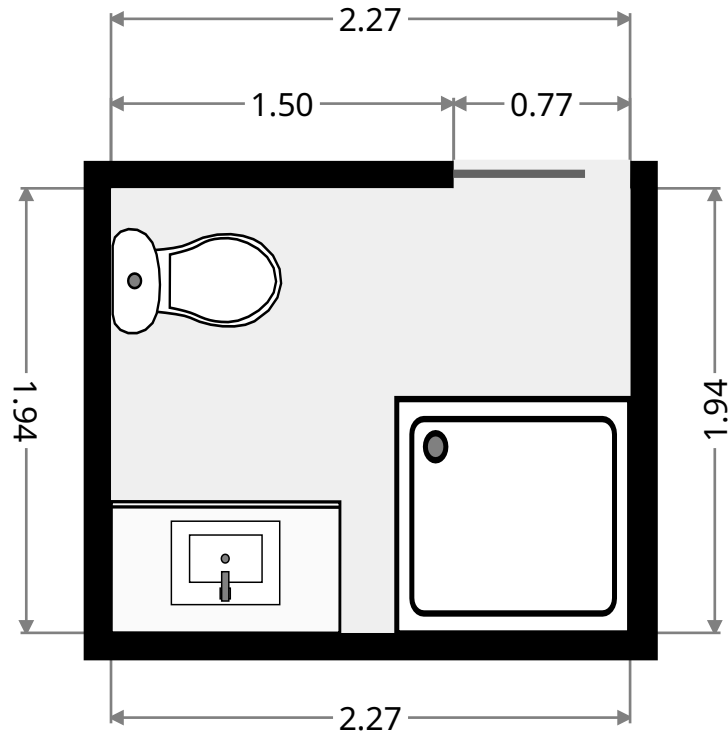
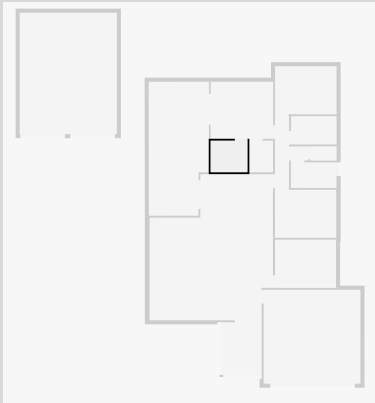


THIS FLOORPLAN IS PROVIDED WITHOUT WARRANTY OF ANY KIND. SENSOPIA DISCLAIMS ANY WARRANTY INCLUDING, WITHOUT LIMITATION, SATISFACTORY QUALITY OR ACCURACY OF DIMENSIONS.

# 25 Tawarra Crescent

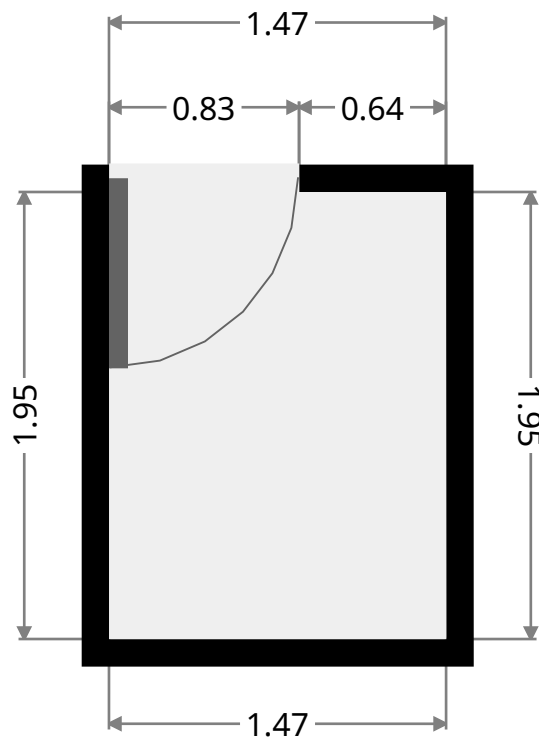
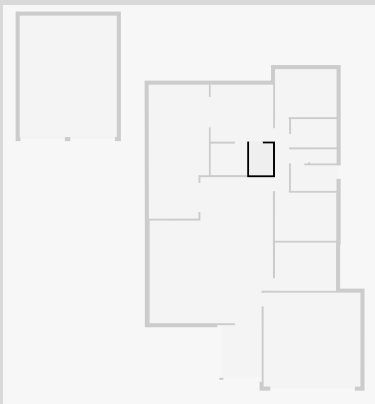
## Bathroom

Width: 1.94 m  
Length: 2.27 m  
Area: 4.40 m<sup>2</sup>  
Perimeter: 8.42 m



## WIR

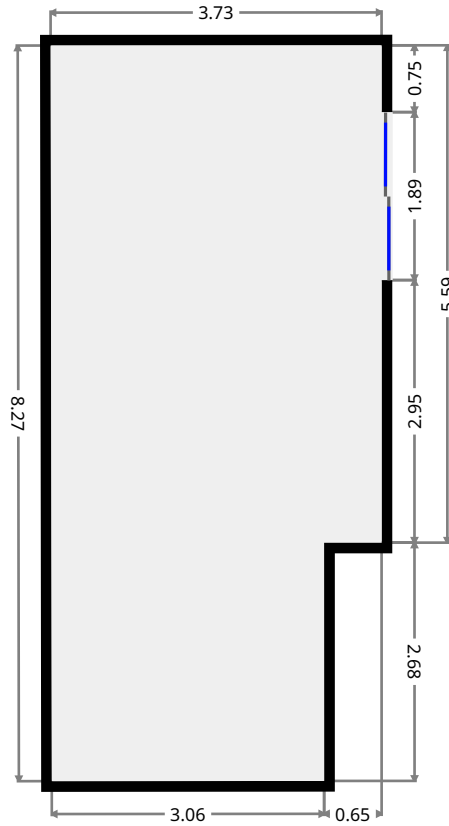
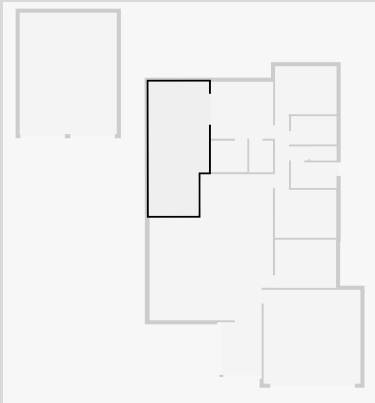
Width: 1.47 m  
Length: 1.95 m  
Area: 2.87 m<sup>2</sup>  
Perimeter: 6.85 m



# 25 Tawarra Crescent

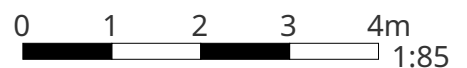
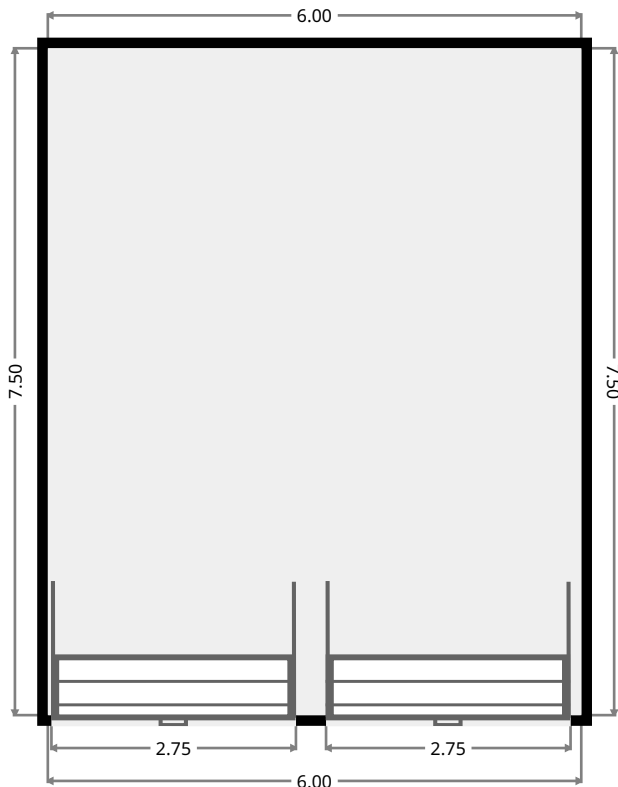
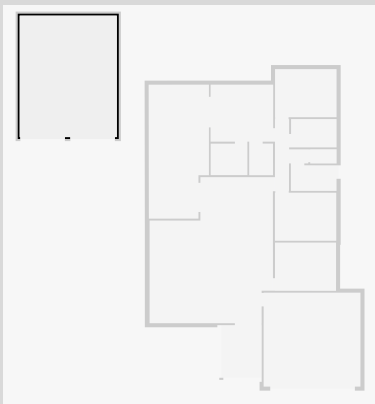
## Outdoor Area

Width: 3.73 m  
 Length: 8.27 m  
 Area: 29.01 m<sup>2</sup>  
 Perimeter: 23.98 m



## Shed

Width: 6.00 m  
 Length: 7.50 m  
 Area: 45.00 m<sup>2</sup>  
 Perimeter: 27.00 m



THIS FLOORPLAN IS PROVIDED WITHOUT WARRANTY OF ANY KIND. SENSOPIA DISCLAIMS ANY WARRANTY INCLUDING, WITHOUT LIMITATION, SATISFACTORY QUALITY OR ACCURACY OF DIMENSIONS.



# 25 Tawarra Crescent

•  
Width: 2.37 m  
Length: 3.13 m  
Area: 7.41 m<sup>2</sup>  
Perimeter: 11.00 m

