

22 Neil Street

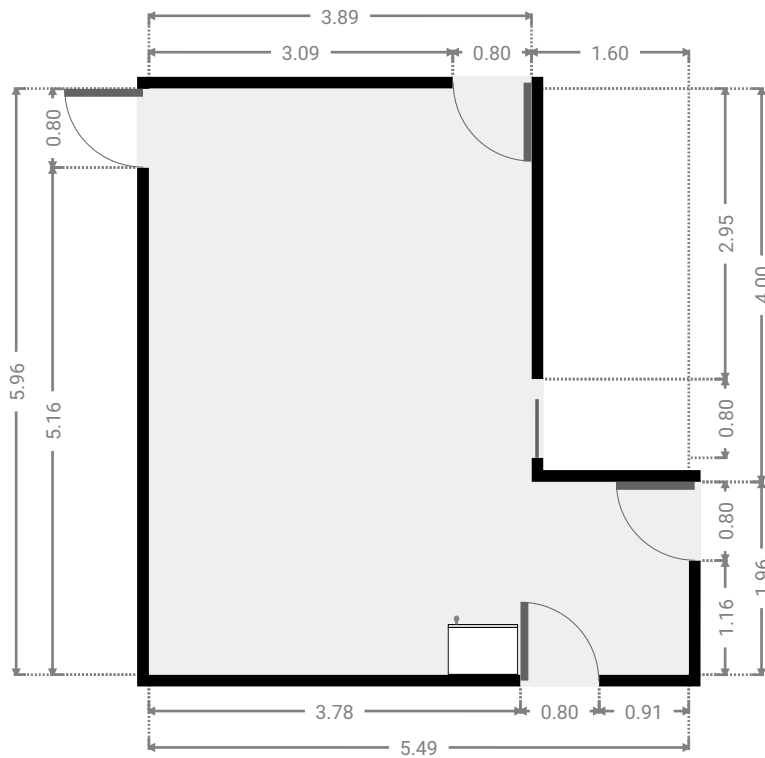
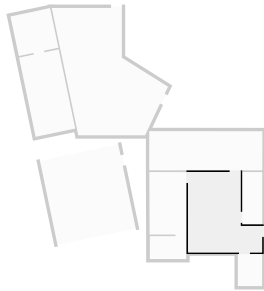
SUBMITTED BY
Ray White Rockhampton Casey
stockers@cqoz.com

CREATED ON
2022-02-24

Floors
2

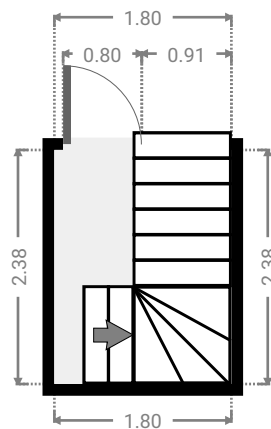
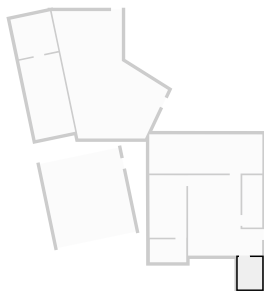
▼ Living Room Ground Floor

WIDTH: 5.49 m • LENGTH: 5.96 m
AREA: 26.32 m² • PERIMETER: 22.90 m



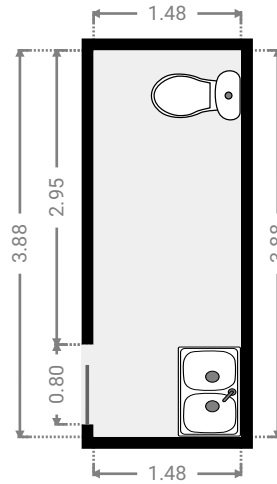
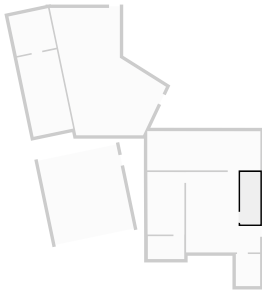
▼ Stairway Ground Floor

WIDTH: 1.80 m • LENGTH: 2.38 m
AREA: 4.28 m² • PERIMETER: 8.36 m



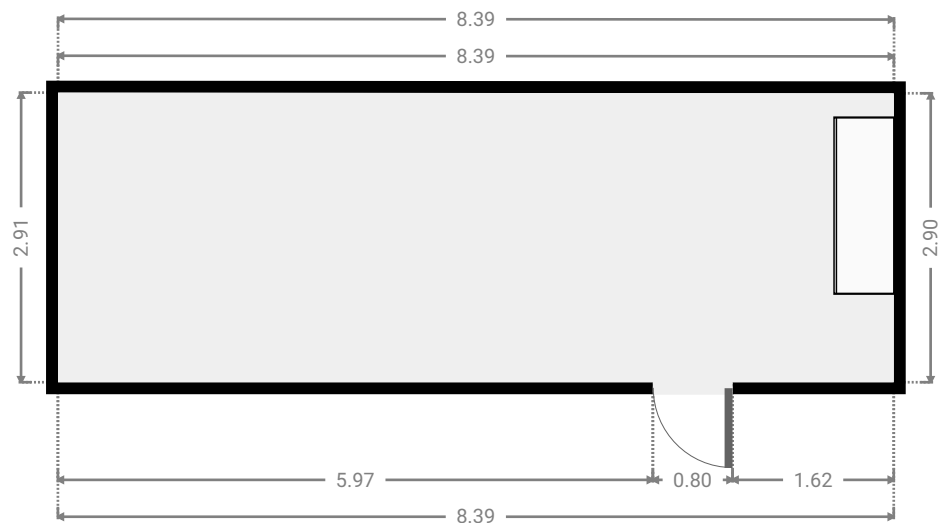
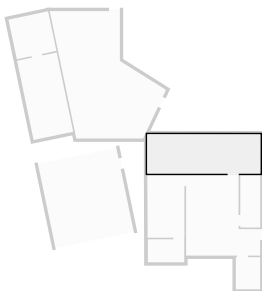
▼ **Laundry Room**
Ground Floor

WIDTH: 1.48 m • LENGTH: 3.88 m
AREA: 5.74 m² • PERIMETER: 10.72 m



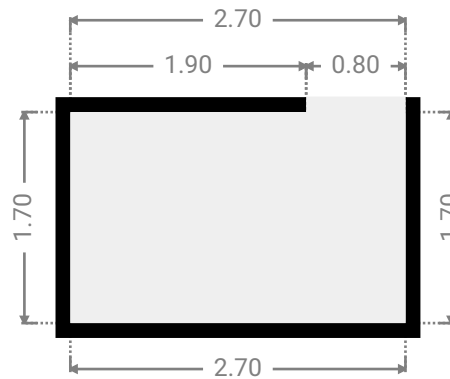
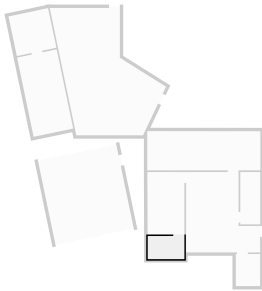
▼ **Other**
Ground Floor

WIDTH: 8.39 m • LENGTH: 2.90 m
AREA: 24.36 m² • PERIMETER: 22.59 m



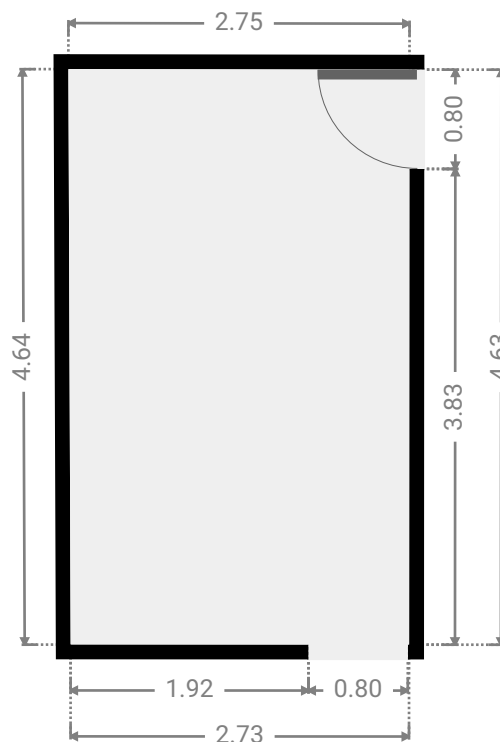
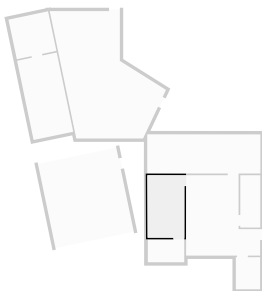
▼ **Closet**
Ground Floor

WIDTH: 2.70 m • LENGTH: 1.70 m
AREA: 4.59 m² • PERIMETER: 8.80 m



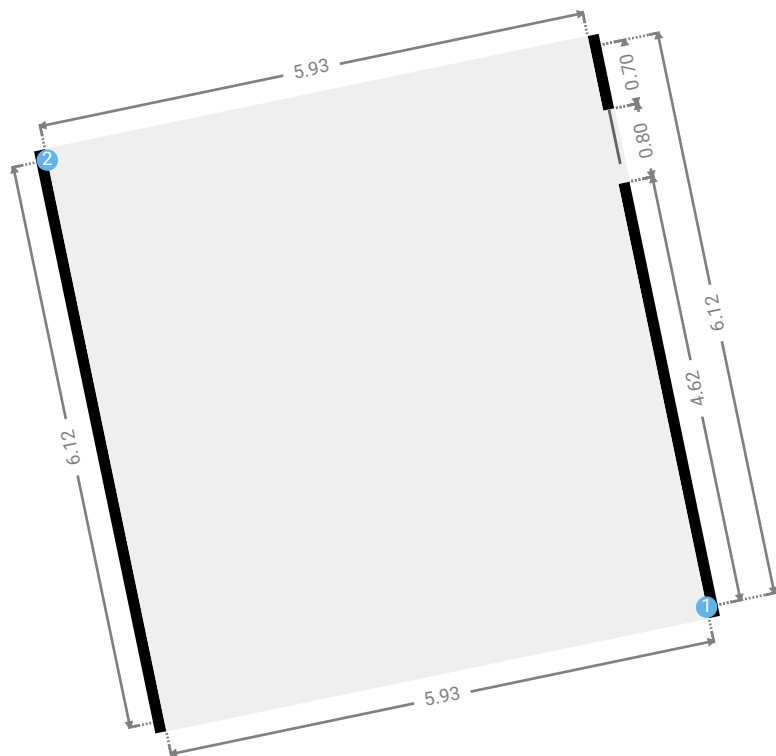
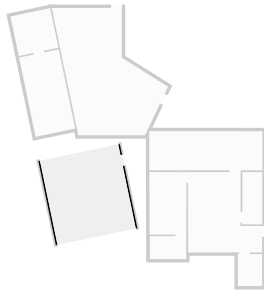
▼ **Bedroom**
Ground Floor

WIDTH: 2.75 m • LENGTH: 4.64 m
AREA: 12.69 m² • PERIMETER: 14.74 m



▼ Garage
Ground Floor

WIDTH: 5.93 m • LENGTH: 6.12 m
AREA: 36.29 m² • PERIMETER: 24.10 m



▼ Garage/Ground Floor

1 OPENING

Height
0.00 m



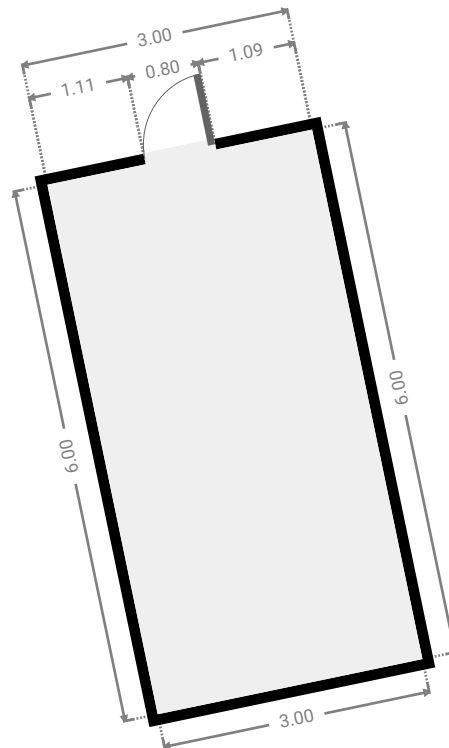
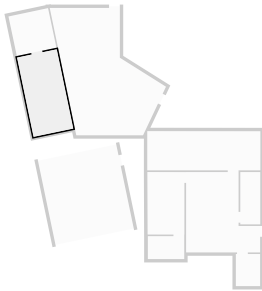
2 OPENING

Height
0.00 m



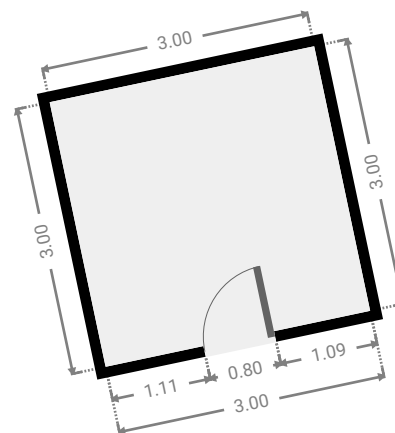
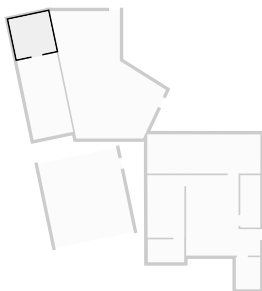
▼ Other
Ground Floor

WIDTH: 3.00 m • LENGTH: 6.00 m
AREA: 18.00 m² • PERIMETER: 18.00 m



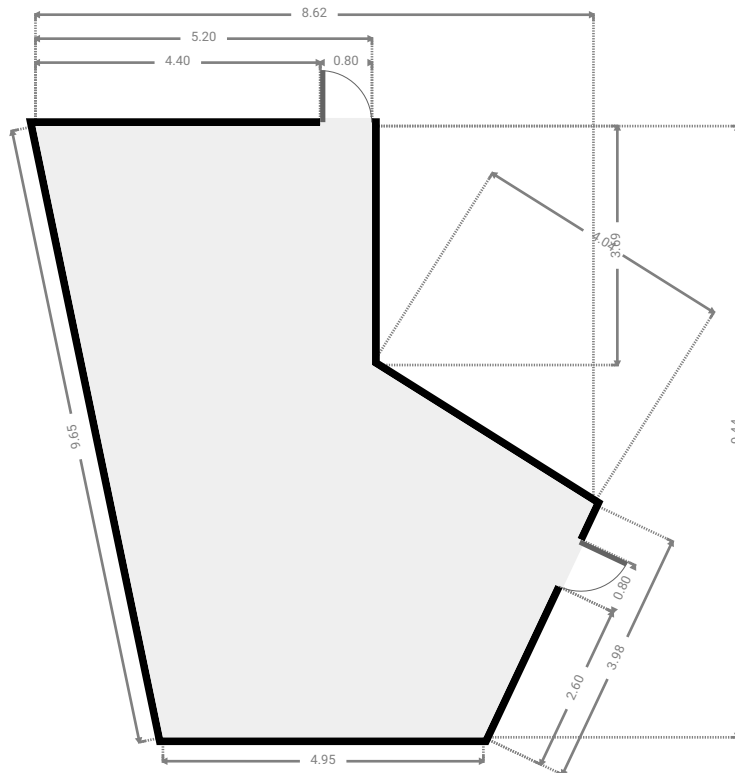
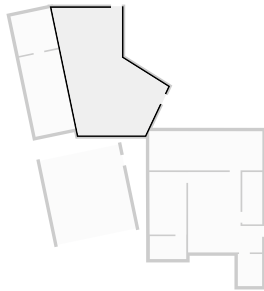
▼ Other
Ground Floor

WIDTH: 3.00 m • LENGTH: 3.00 m
AREA: 9.00 m² • PERIMETER: 12.00 m

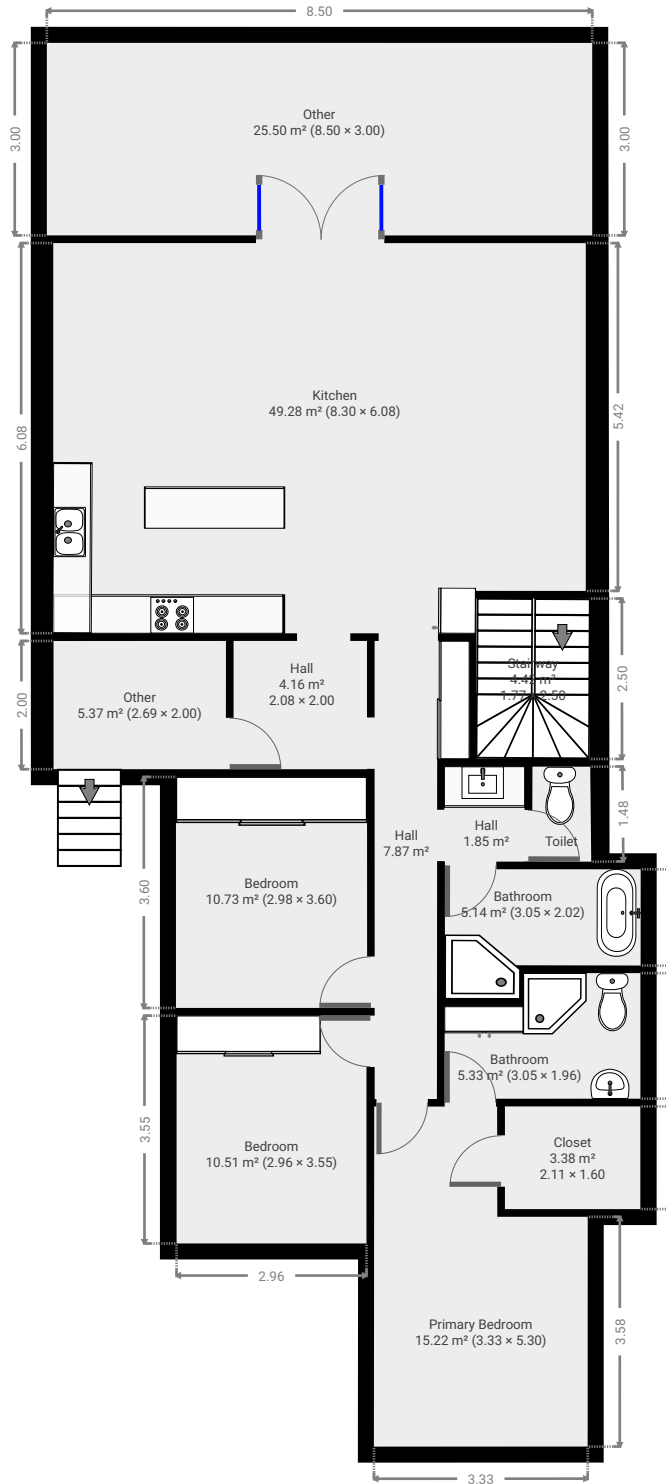


▼ Other
Ground Floor

WIDTH: 8.62 m • LENGTH: 9.44 m
AREA: 52.75 m² • PERIMETER: 31.52 m

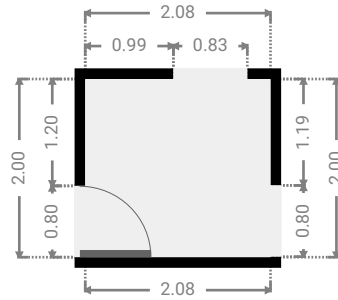


▼ 1st Floor



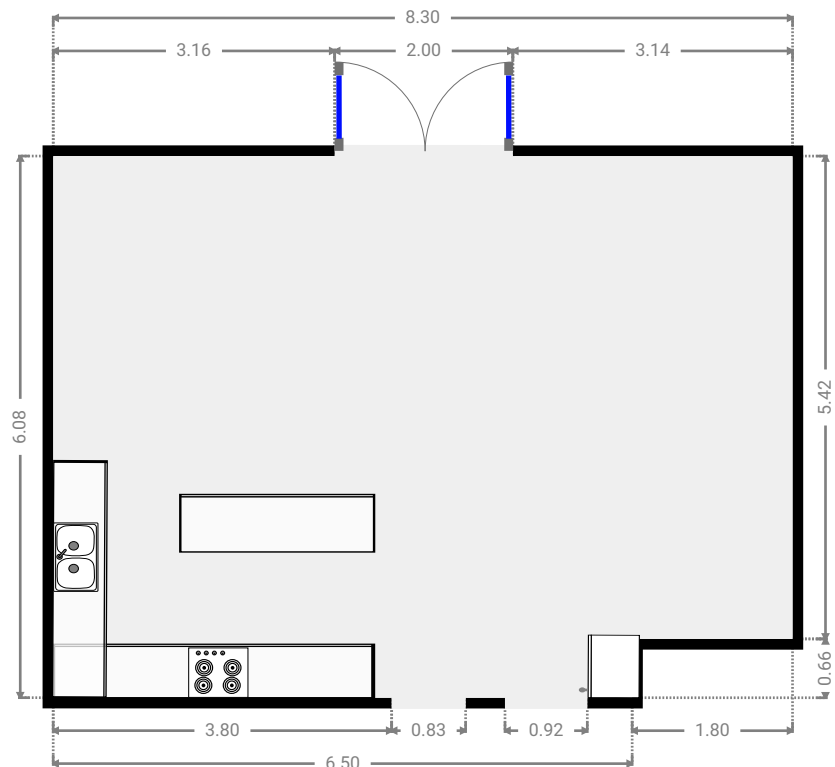
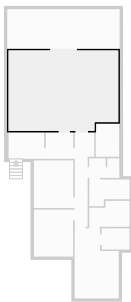
▼ **Hall**
1st Floor

WIDTH: 2.08 m • LENGTH: 2.00 m
AREA: 4.16 m² • PERIMETER: 8.16 m



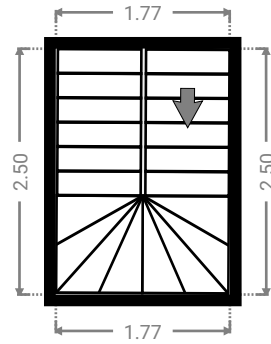
▼ **Kitchen**
1st Floor

WIDTH: 8.30 m • LENGTH: 6.08 m
AREA: 49.28 m² • PERIMETER: 28.76 m



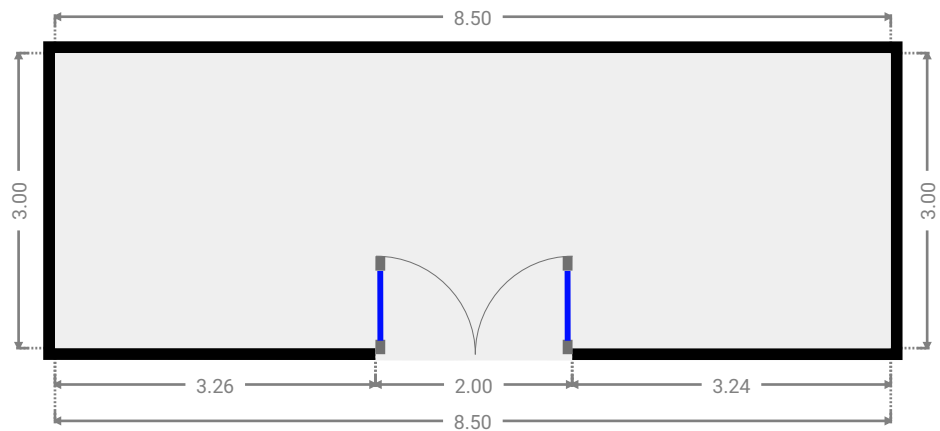
▼ Stairway
1st Floor

WIDTH: 1.77 m • LENGTH: 2.50 m
AREA: 4.42 m² • PERIMETER: 8.54 m



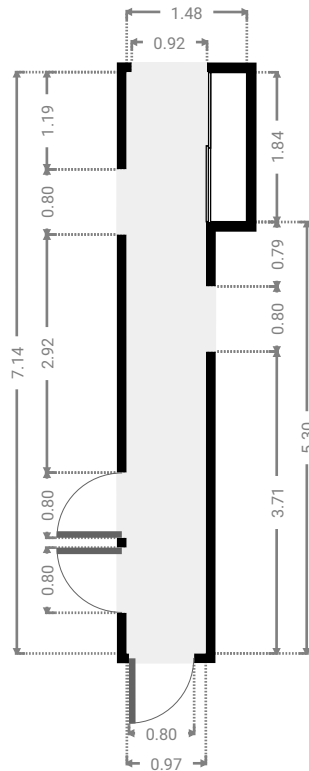
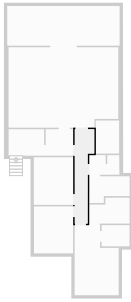
▼ Other
1st Floor

WIDTH: 8.50 m • LENGTH: 3.00 m
AREA: 25.50 m² • PERIMETER: 23.00 m



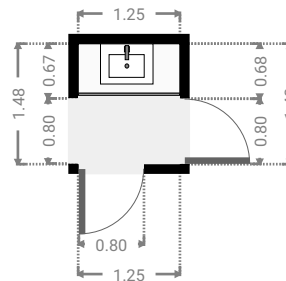
▼ Hall
1st Floor

WIDTH: 1.48 m • LENGTH: 7.14 m
AREA: 7.87 m² • PERIMETER: 17.22 m



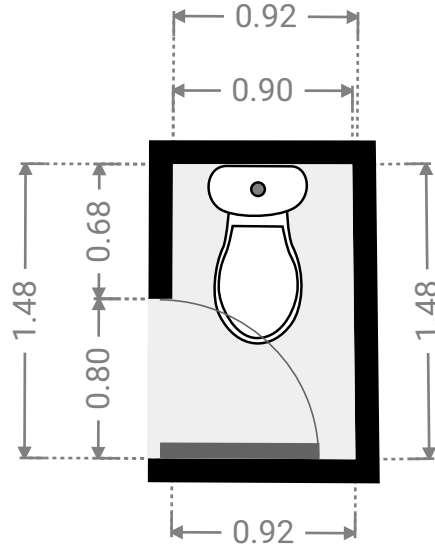
▼ Hall
1st Floor

WIDTH: 1.25 m • LENGTH: 1.48 m
AREA: 1.85 m² • PERIMETER: 5.46 m



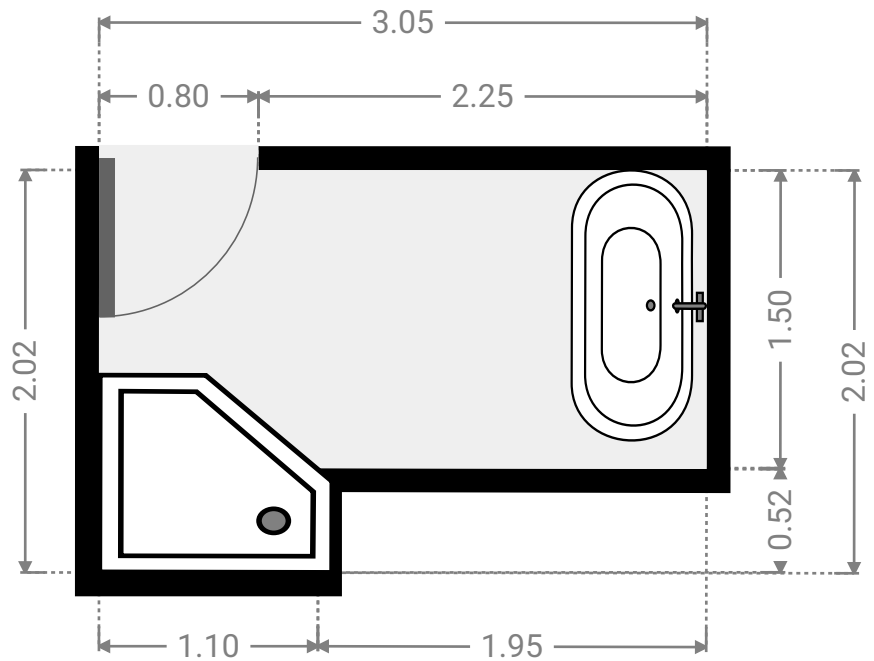
▼ **Toilet**
1st Floor

WIDTH: 0.92 m • LENGTH: 1.48 m
AREA: 1.35 m² • PERIMETER: 4.78 m



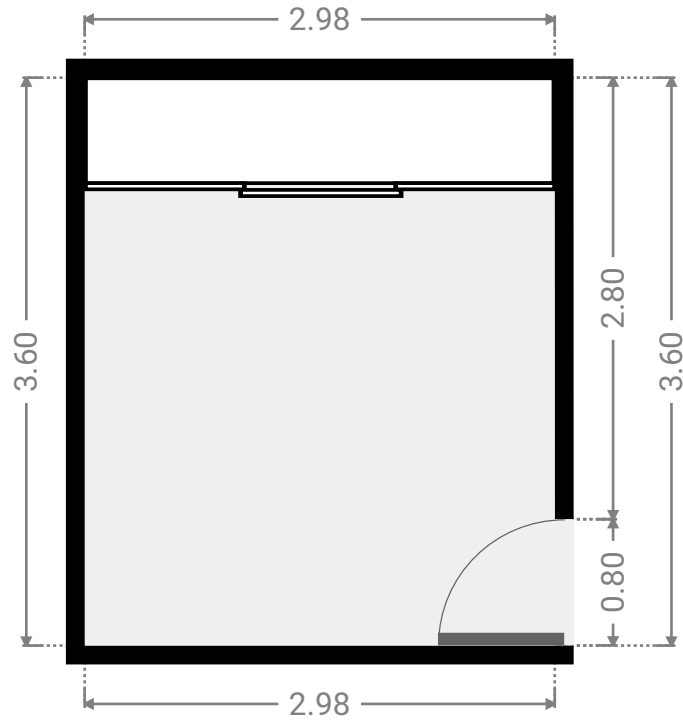
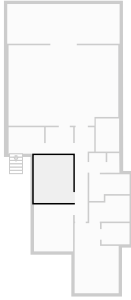
▼ **Bathroom**
1st Floor

WIDTH: 3.05 m • LENGTH: 2.02 m
AREA: 5.14 m² • PERIMETER: 10.14 m



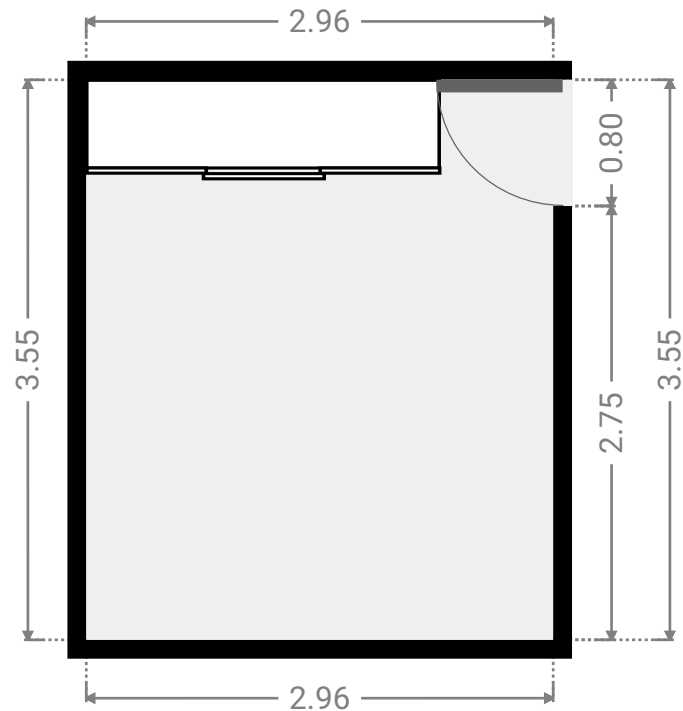
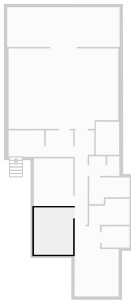
▼ Bedroom
1st Floor

WIDTH: 2.98 m • LENGTH: 3.60 m
AREA: 10.73 m² • PERIMETER: 13.16 m



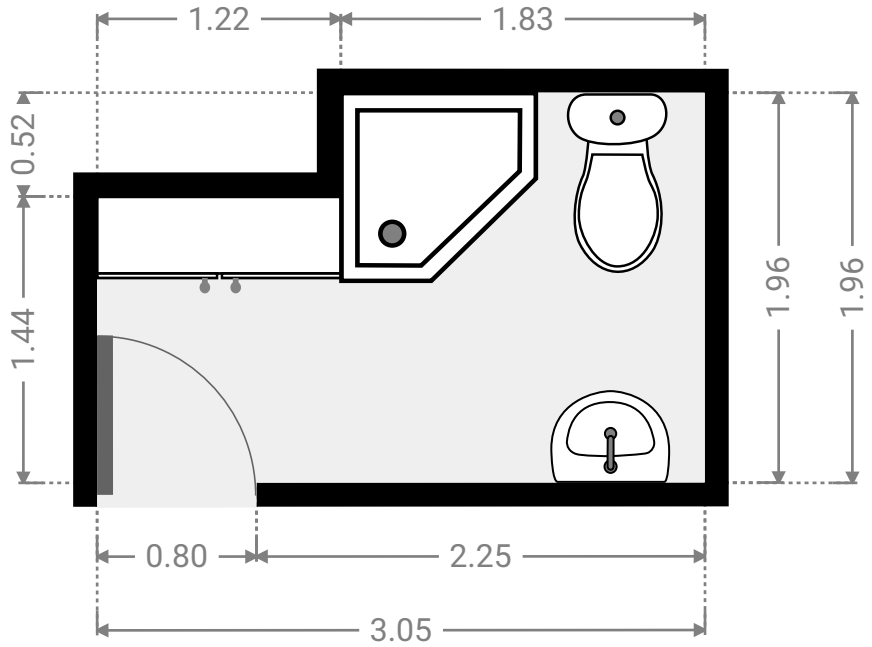
▼ Bedroom
1st Floor

WIDTH: 2.96 m • LENGTH: 3.55 m
AREA: 10.51 m² • PERIMETER: 13.02 m



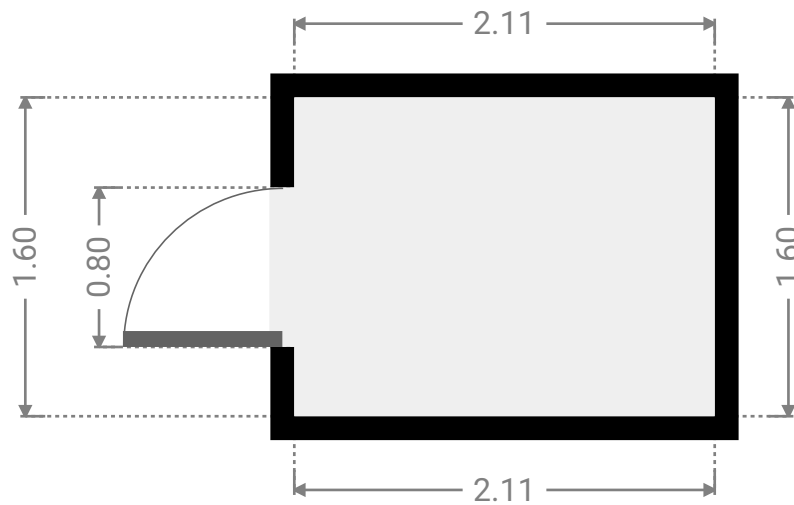
▼ **Bathroom**
1st Floor

WIDTH: 3.05 m • LENGTH: 1.96 m
AREA: 5.33 m² • PERIMETER: 10.02 m



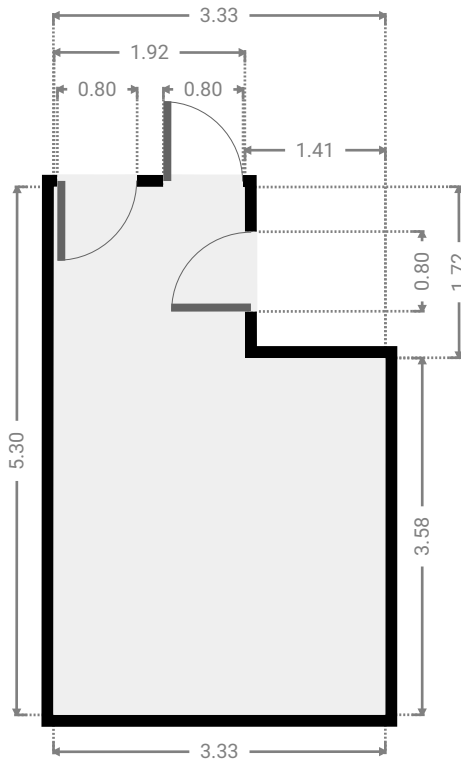
▼ **Closet**
1st Floor

WIDTH: 2.11 m • LENGTH: 1.60 m
AREA: 3.38 m² • PERIMETER: 7.42 m



▼ **Primary Bedroom**
1st Floor

WIDTH: 3.33 m • LENGTH: 5.30 m
AREA: 15.22 m² • PERIMETER: 17.25 m



▼ **Other**
1st Floor

WIDTH: 2.69 m • LENGTH: 2.00 m
AREA: 5.37 m² • PERIMETER: 9.37 m

