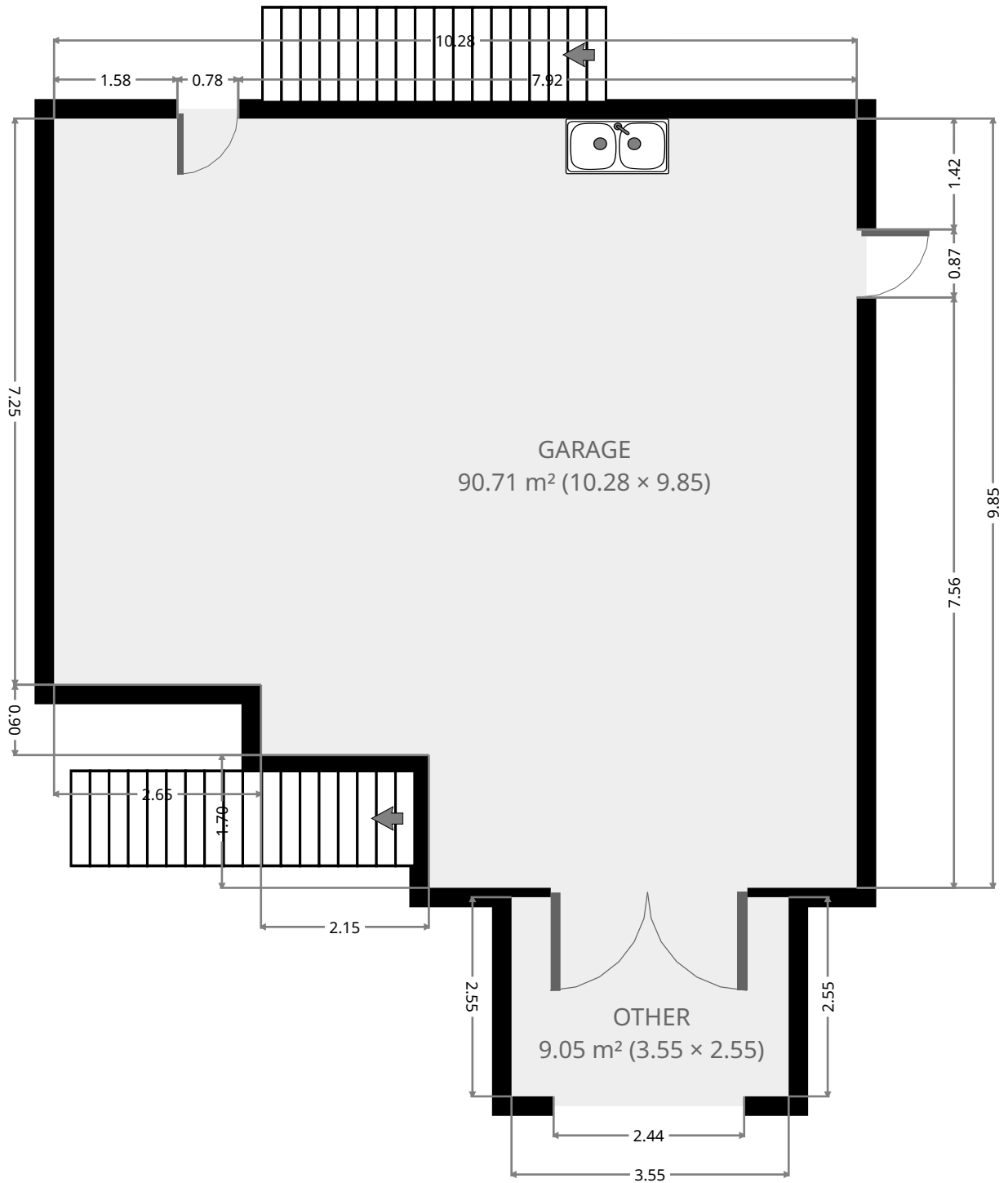


133a Donnollon Street

Ground Floor



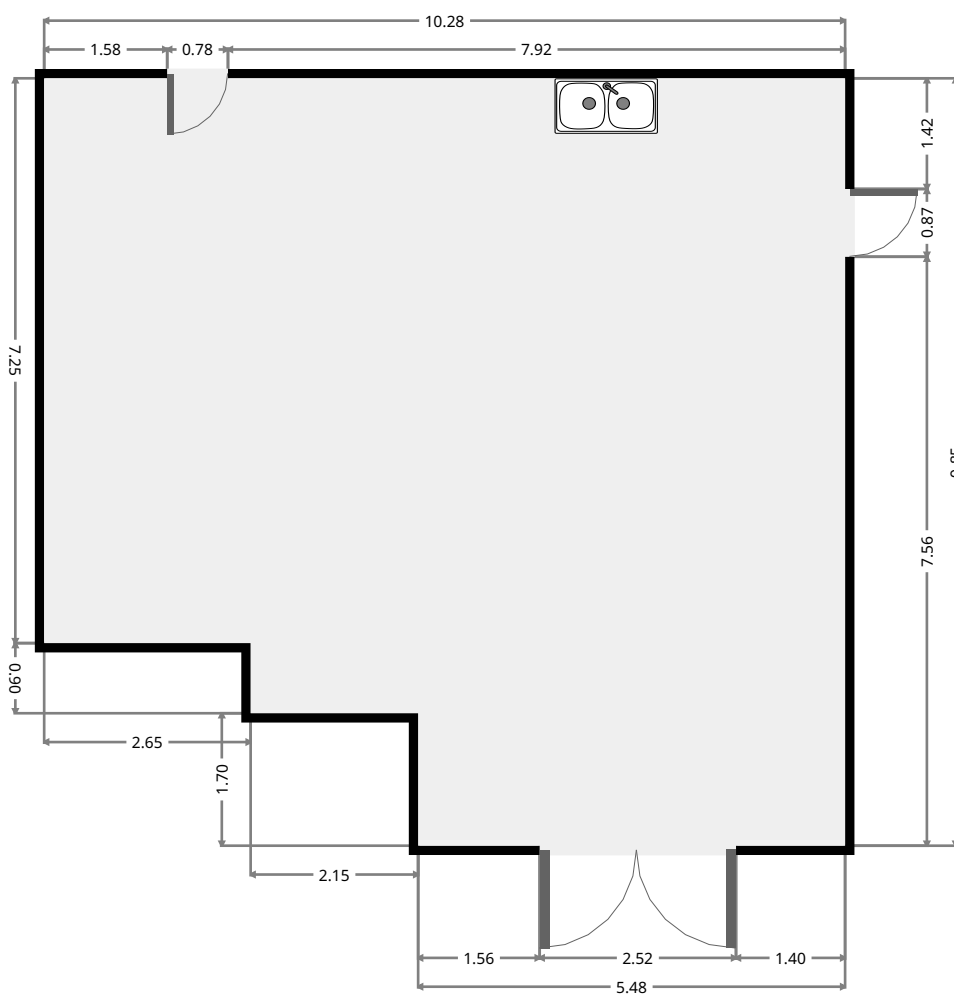
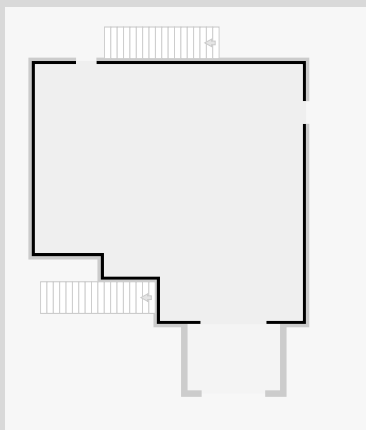
THIS FLOORPLAN IS PROVIDED WITHOUT WARRANTY OF ANY KIND. SENSOPIA DISCLAIMS ANY WARRANTY INCLUDING, WITHOUT LIMITATION, SATISFACTORY QUALITY OR ACCURACY OF DIMENSIONS.



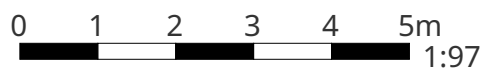
133a Donnollon Street

Garage

Width: 9.85 m
Length: 10.28 m
Area: 90.71 m²
Perimeter: 40.26 m



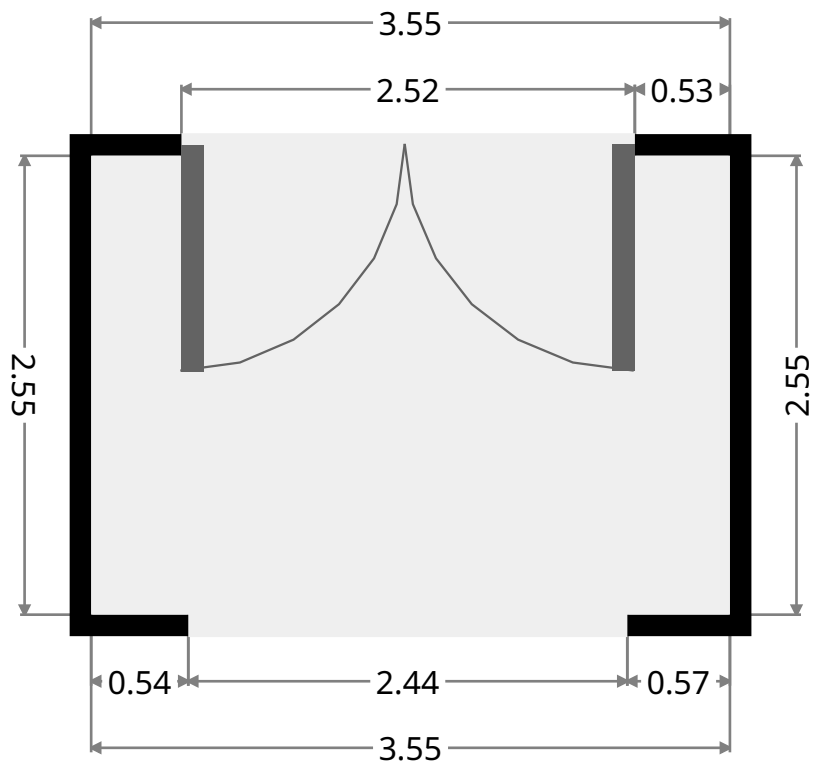
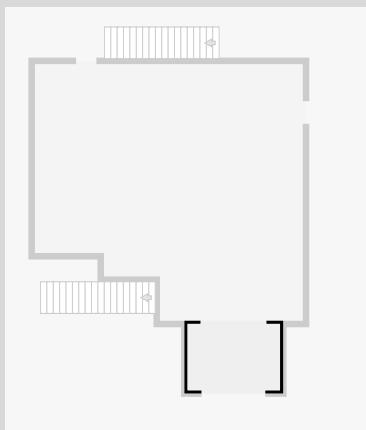
THIS FLOORPLAN IS PROVIDED WITHOUT WARRANTY OF ANY KIND. SENSOPIA DISCLAIMS ANY WARRANTY INCLUDING, WITHOUT LIMITATION, SATISFACTORY QUALITY OR ACCURACY OF DIMENSIONS.



133a Donnollon Street

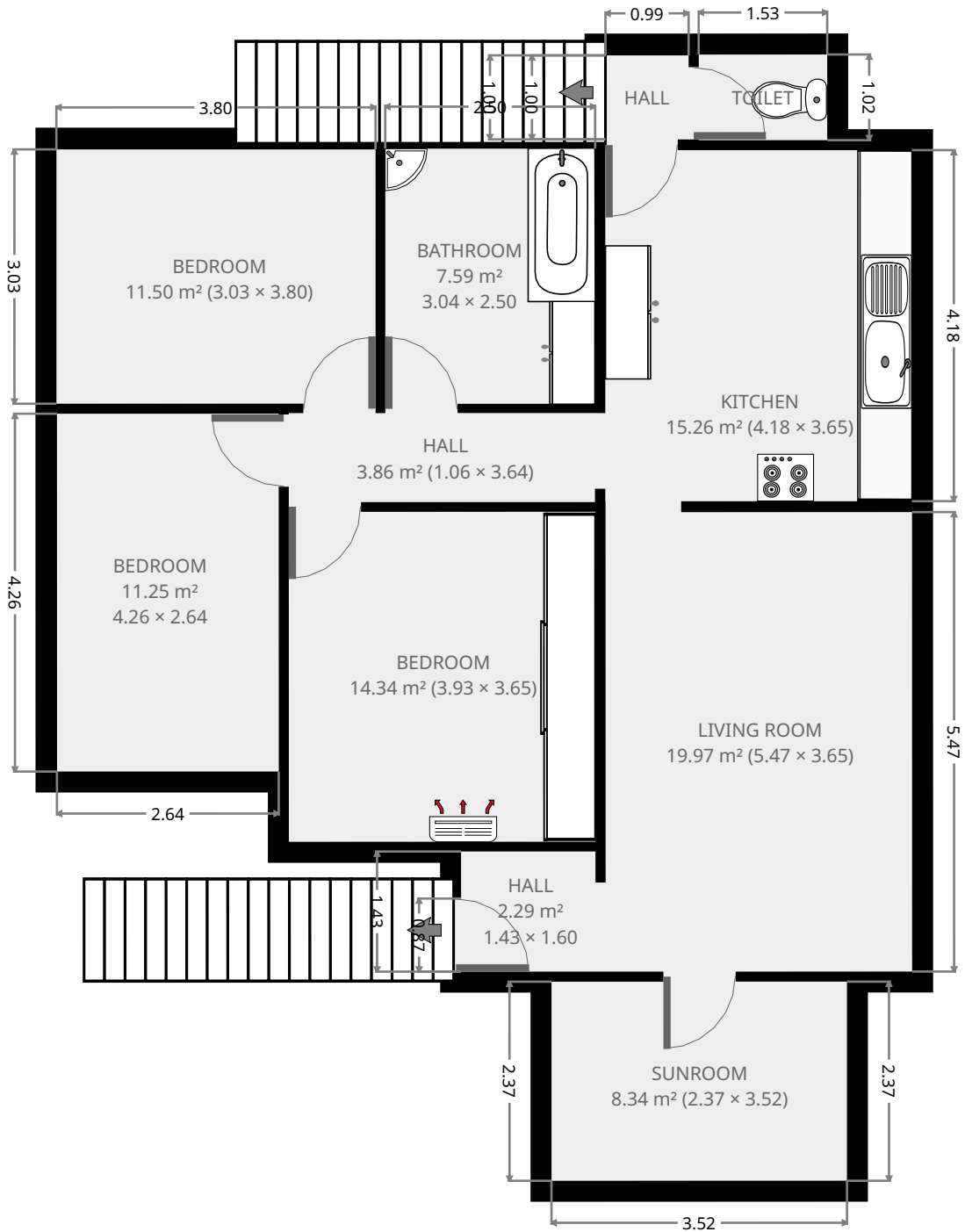
Other

Width: 2.55 m
Length: 3.55 m
Area: 9.05 m²
Perimeter: 12.20 m



133a Donnollon Street

1st Floor

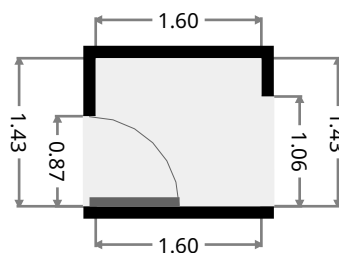
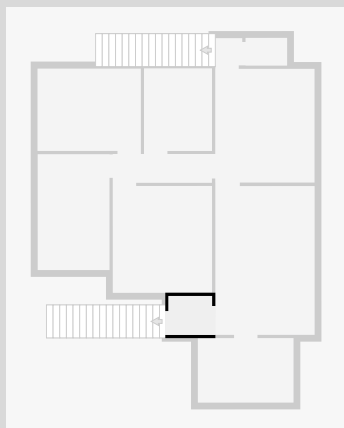


THIS FLOORPLAN IS PROVIDED WITHOUT WARRANTY OF ANY KIND. SENSOPIA DISCLAIMS ANY WARRANTY INCLUDING, WITHOUT LIMITATION, SATISFACTORY QUALITY OR ACCURACY OF DIMENSIONS.

133a Donnollon Street

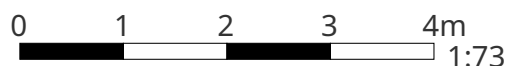
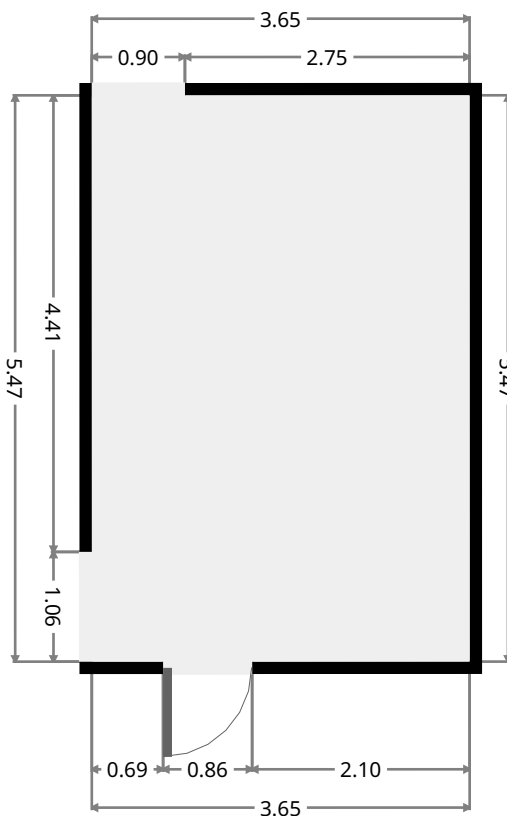
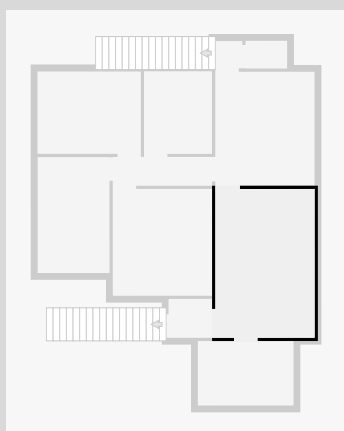
Hall

Width: 1.43 m
Length: 1.60 m
Area: 2.29 m²
Perimeter: 6.06 m



Living Room

Width: 3.65 m
Length: 5.47 m
Area: 19.97 m²
Perimeter: 18.24 m

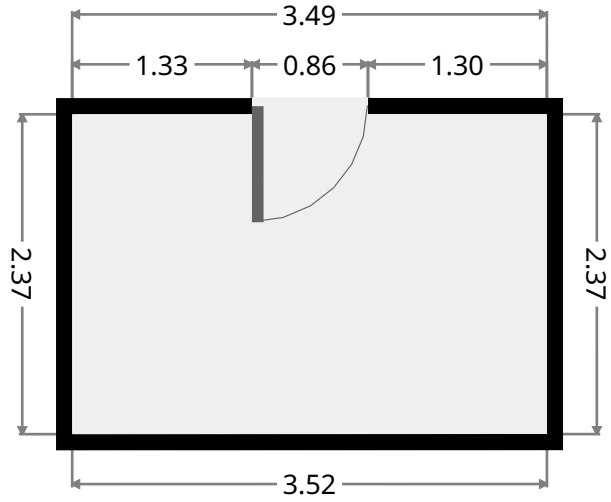
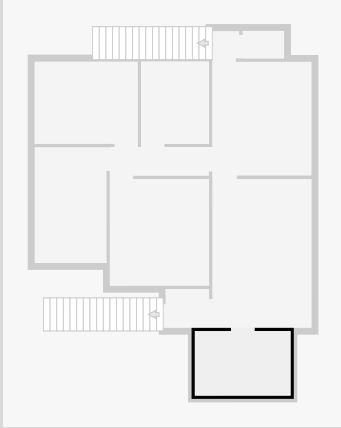


THIS FLOORPLAN IS PROVIDED WITHOUT WARRANTY OF ANY KIND. SENSOPIA DISCLAIMS ANY WARRANTY INCLUDING, WITHOUT LIMITATION, SATISFACTORY QUALITY OR ACCURACY OF DIMENSIONS.

133a Donnollon Street

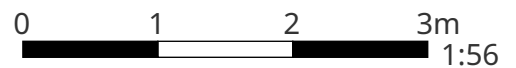
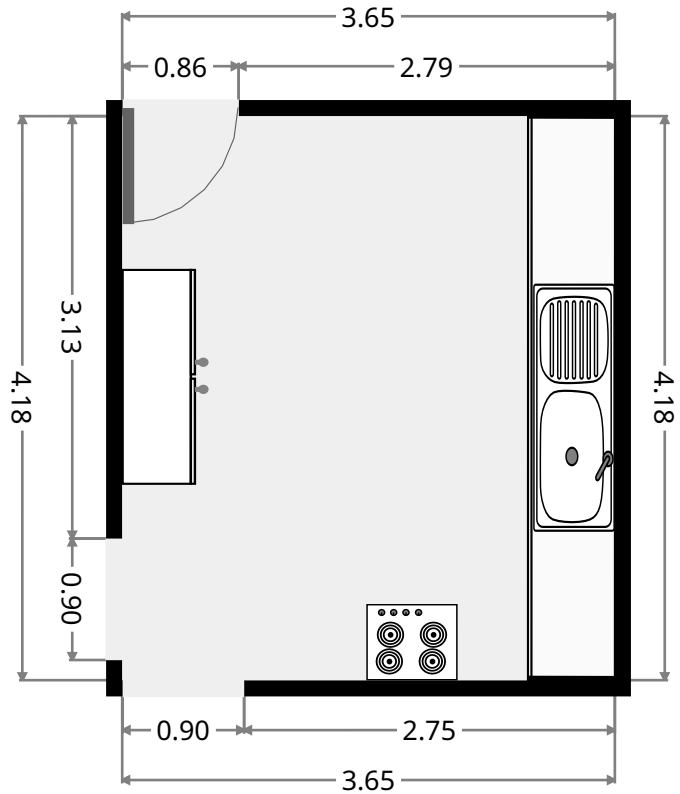
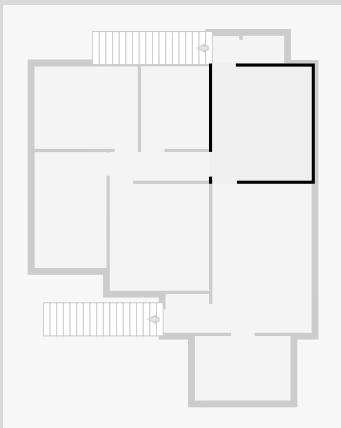
Sunroom

Width: 2.37 m
 Length: 3.52 m
 Area: 8.34 m²
 Perimeter: 11.78 m



Kitchen

Width: 3.65 m
 Length: 4.18 m
 Area: 15.26 m²
 Perimeter: 15.66 m

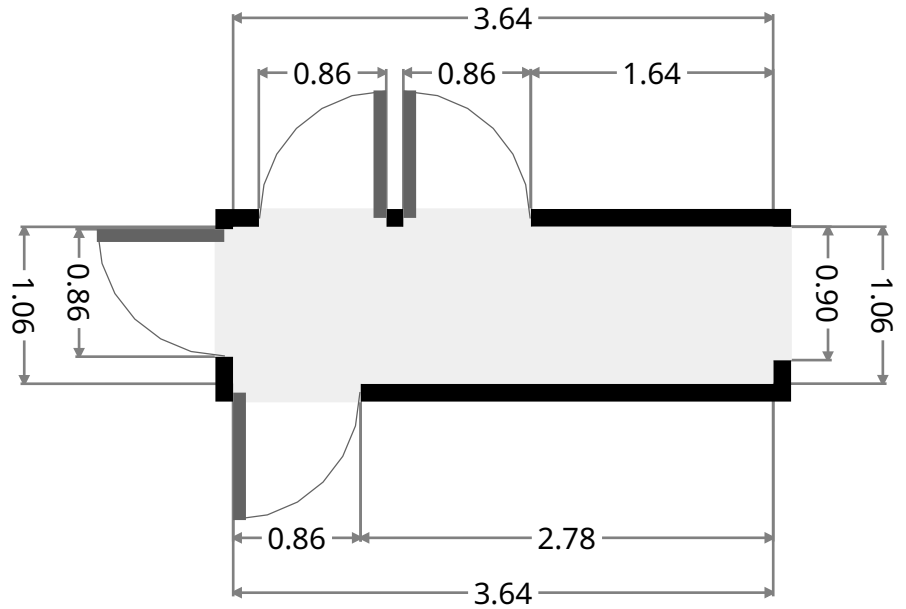
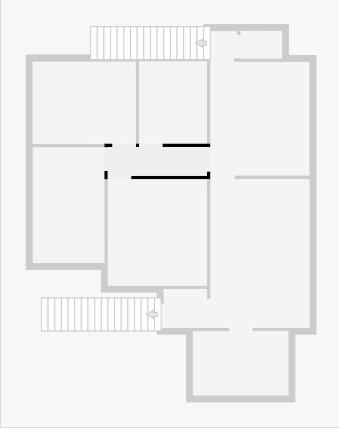


THIS FLOORPLAN IS PROVIDED WITHOUT WARRANTY OF ANY KIND. SENSOPIA DISCLAIMS ANY WARRANTY INCLUDING, WITHOUT LIMITATION, SATISFACTORY QUALITY OR ACCURACY OF DIMENSIONS.

133a Donnollon Street

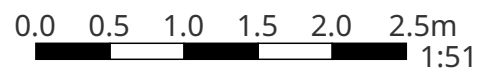
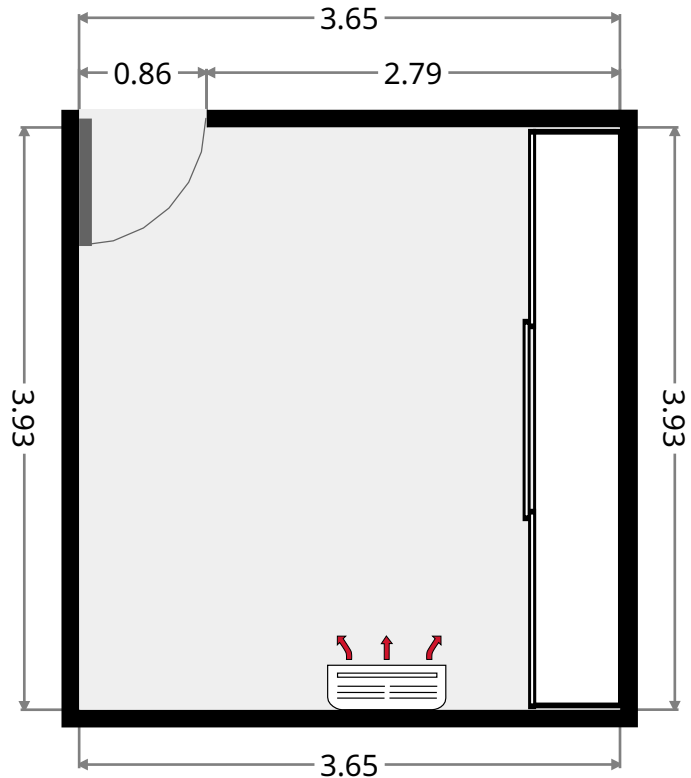
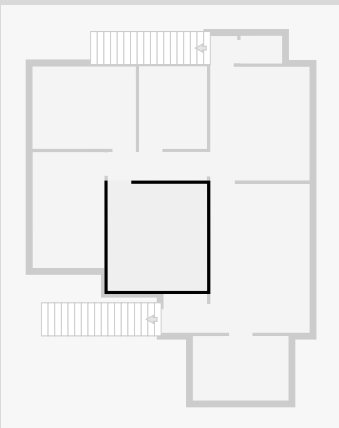
Hall

Width: 1.06 m
 Length: 3.64 m
 Area: 3.86 m²
 Perimeter: 9.41 m



Bedroom

Width: 3.65 m
 Length: 3.93 m
 Area: 14.34 m²
 Perimeter: 15.16 m

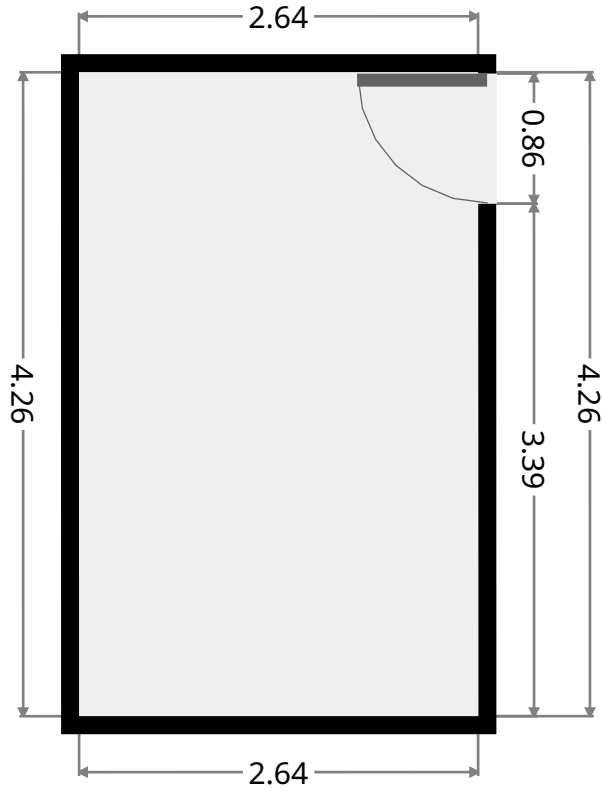
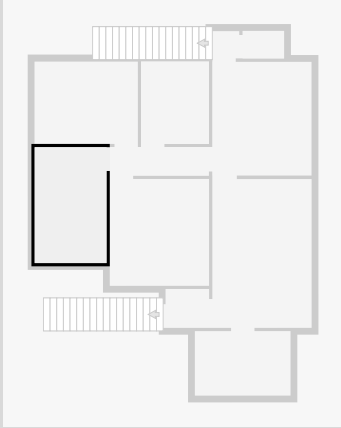


THIS FLOORPLAN IS PROVIDED WITHOUT WARRANTY OF ANY KIND. SENSOPIA DISCLAIMS ANY WARRANTY INCLUDING, WITHOUT LIMITATION, SATISFACTORY QUALITY OR ACCURACY OF DIMENSIONS.

133a Donnollon Street

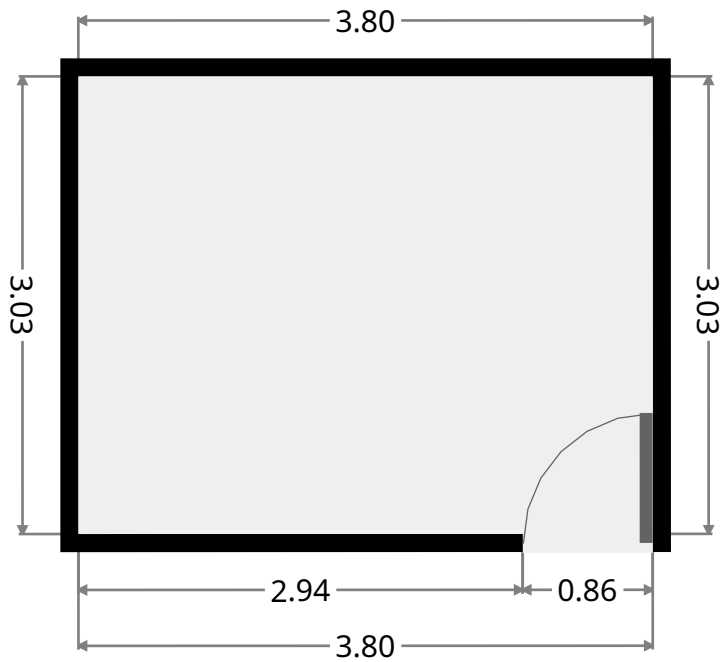
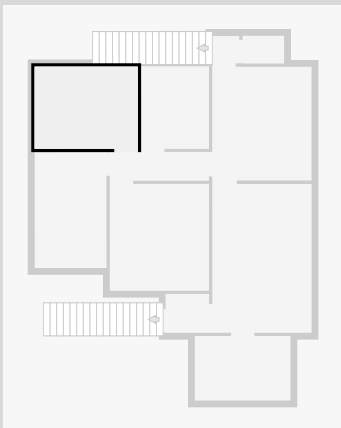
Bedroom

Width: 2.64 m
 Length: 4.26 m
 Area: 11.25 m²
 Perimeter: 13.80 m



Bedroom

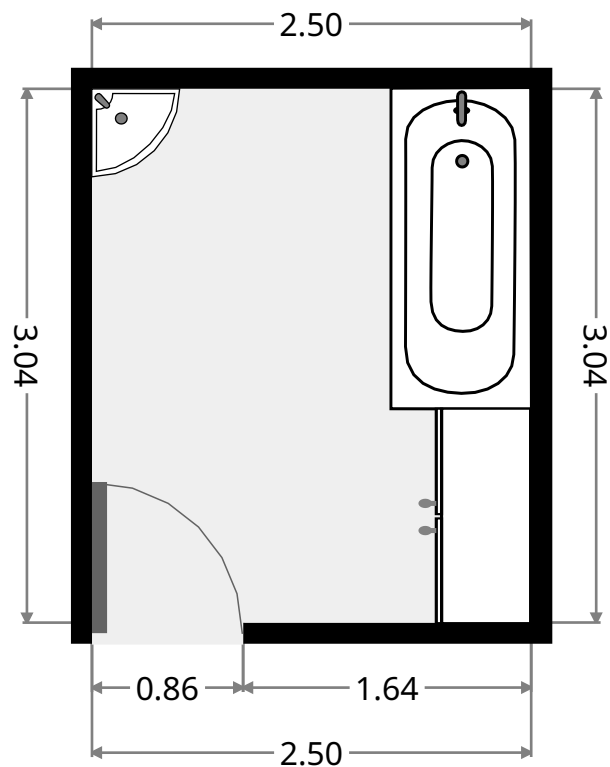
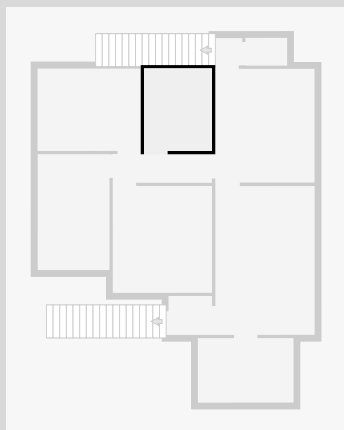
Width: 3.03 m
 Length: 3.80 m
 Area: 11.50 m²
 Perimeter: 13.65 m



133a Donnollon Street

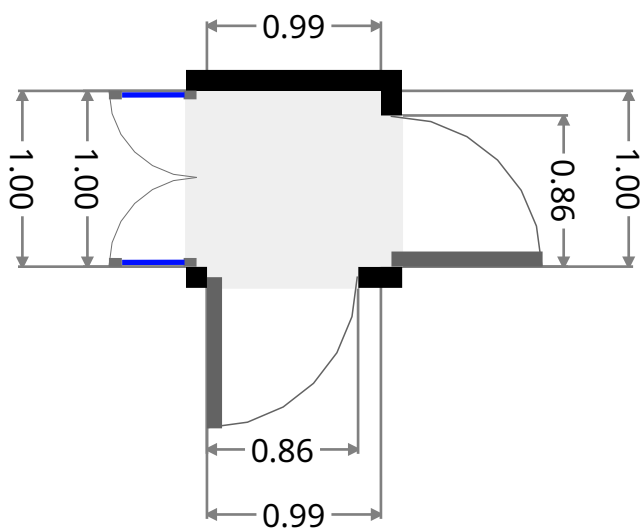
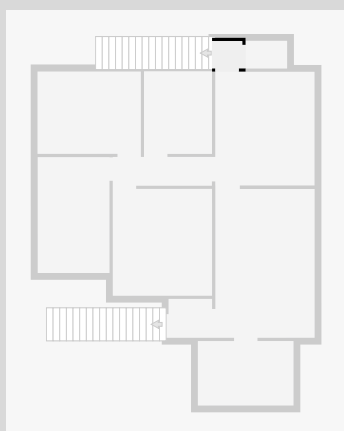
Bathroom

Width: 2.50 m
Length: 3.04 m
Area: 7.59 m²
Perimeter: 11.07 m



Hall

Width: 0.99 m
Length: 1.00 m
Area: 0.99 m²
Perimeter: 3.98 m



133a Donnollon Street

Toilet

Width: 1.02 m
Length: 1.53 m
Area: 1.56 m²
Perimeter: 5.10 m

