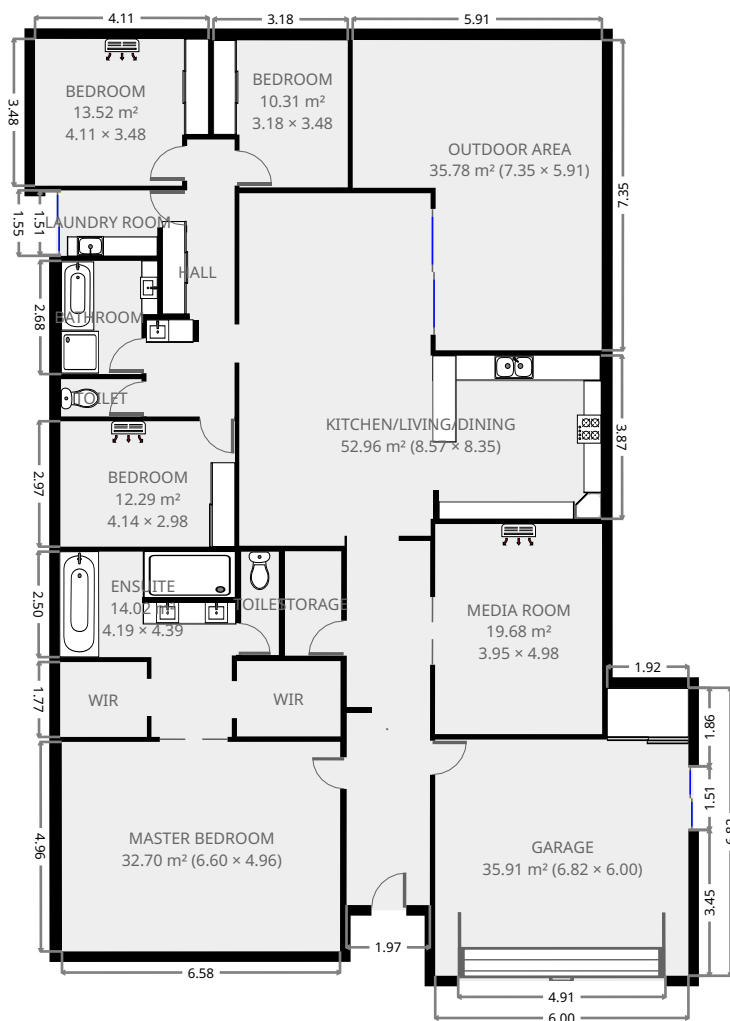
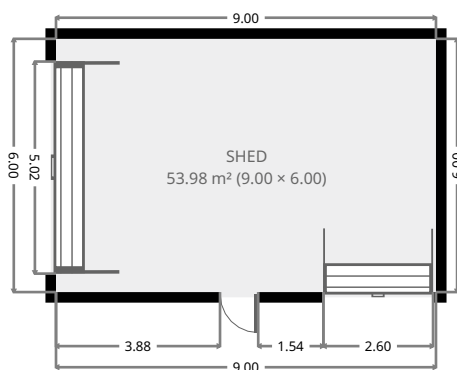


# 11 Argyle Avenue

## Ground Floor



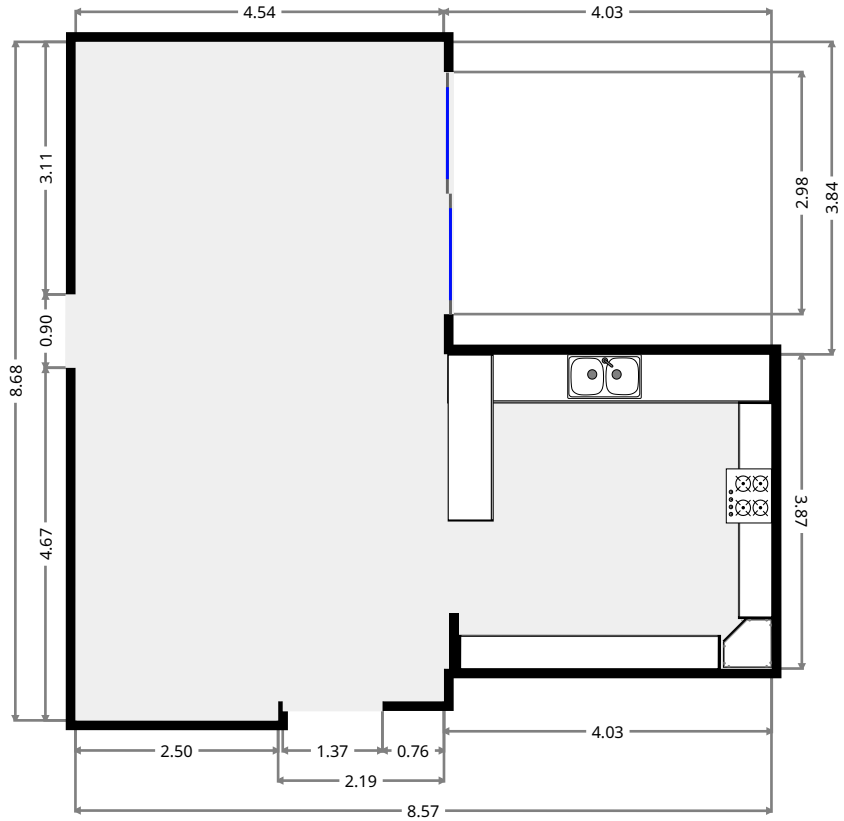
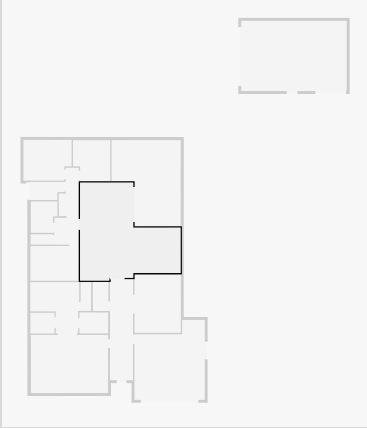
THIS FLOORPLAN IS PROVIDED WITHOUT WARRANTY OF ANY KIND. SENSOPIA DISCLAIMS ANY WARRANTY INCLUDING, WITHOUT LIMITATION, SATISFACTORY QUALITY OR ACCURACY OF DIMENSIONS.



# 11 Argyle Avenue

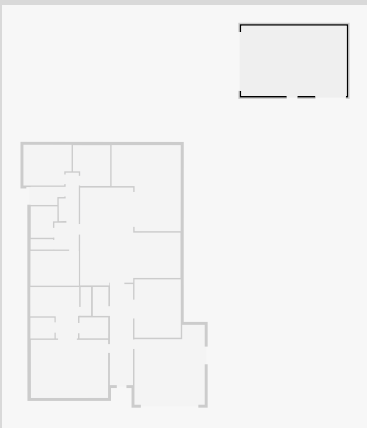
## Kitchen/Living/Dining

Width: 8.35 m  
 Length: 8.57 m  
 Area: 52.96 m<sup>2</sup>  
 Perimeter: 33.83 m



## Shed

Width: 6.00 m  
 Length: 9.00 m  
 Area: 53.98 m<sup>2</sup>  
 Perimeter: 30.00 m



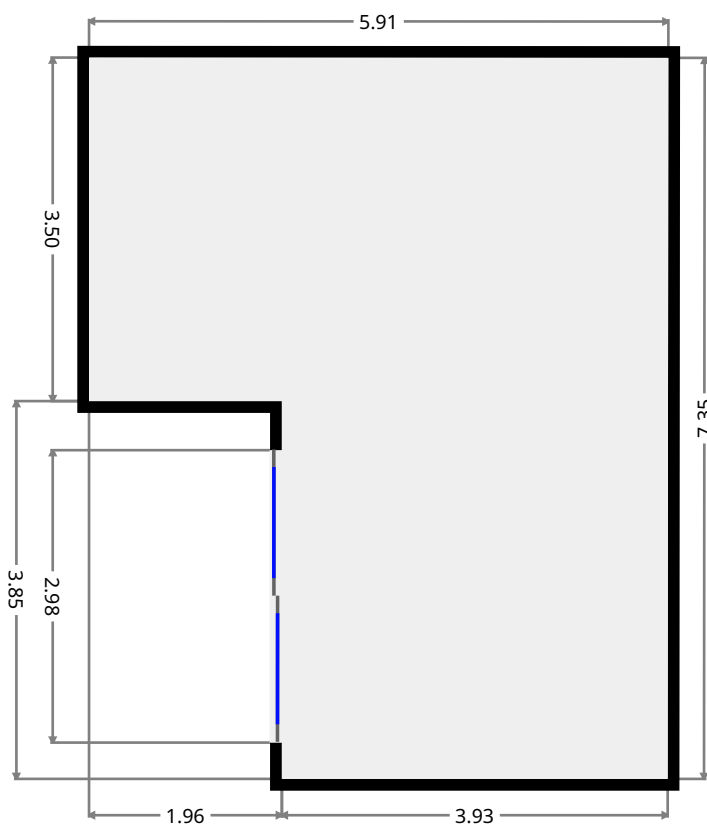
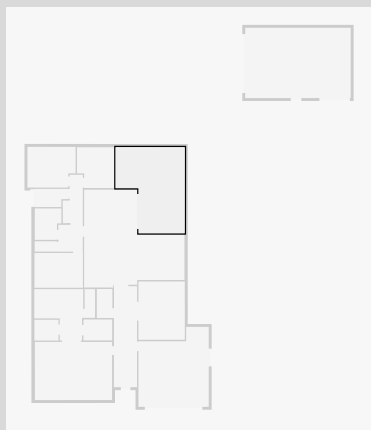
THIS FLOORPLAN IS PROVIDED WITHOUT WARRANTY OF ANY KIND. SENSOPIA DISCLAIMS ANY WARRANTY INCLUDING, WITHOUT LIMITATION, SATISFACTORY QUALITY OR ACCURACY OF DIMENSIONS.



# 11 Argyle Avenue

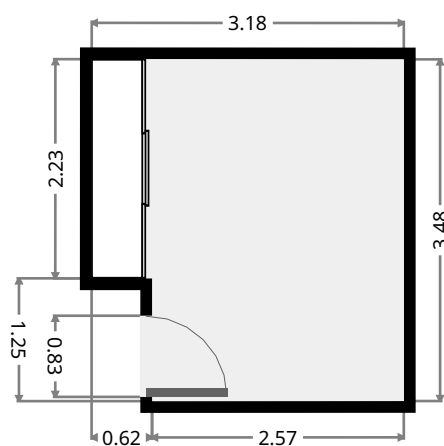
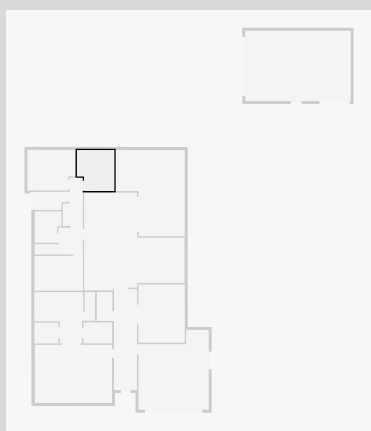
## Outdoor Area

Width: 5.91 m  
Length: 7.35 m  
Area: 35.78 m<sup>2</sup>  
Perimeter: 26.49 m



## Bedroom

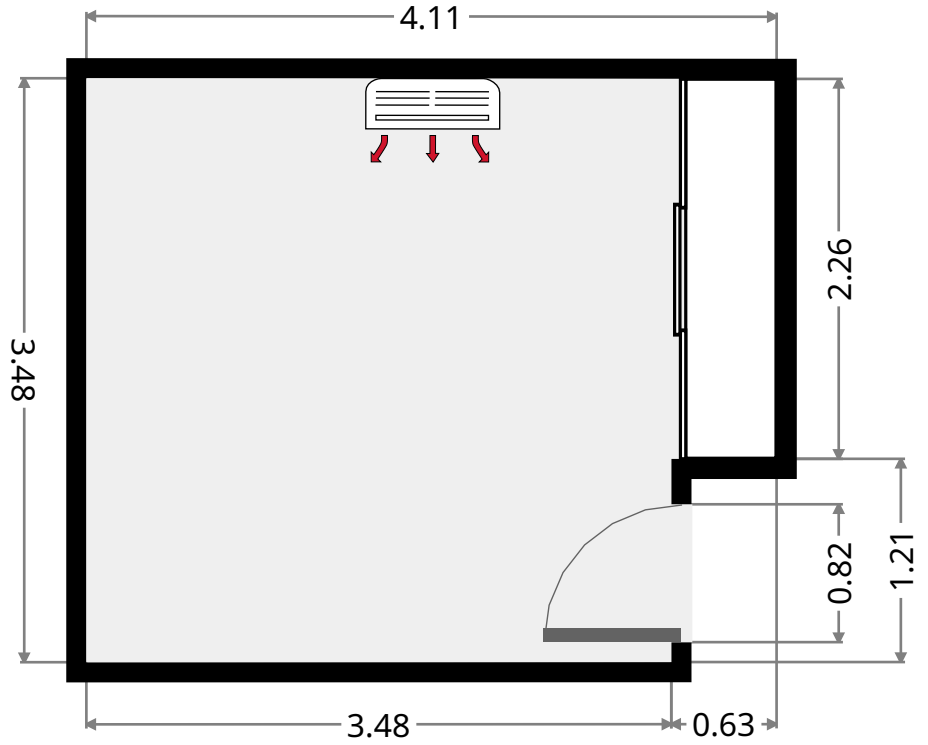
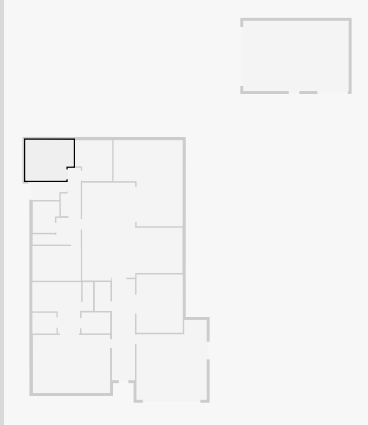
Width: 3.18 m  
Length: 3.48 m  
Area: 10.31 m<sup>2</sup>  
Perimeter: 13.33 m



# 11 Argyle Avenue

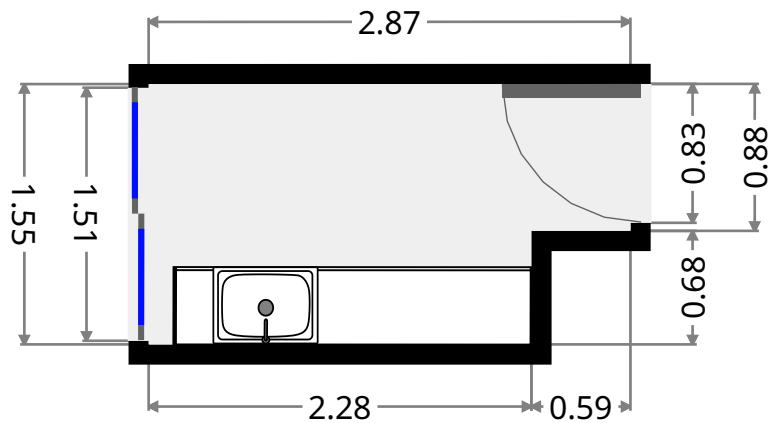
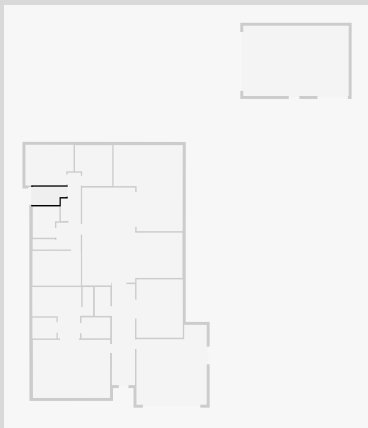
## Bedroom

Width: 3.48 m  
 Length: 4.11 m  
 Area: 13.52 m<sup>2</sup>  
 Perimeter: 15.17 m

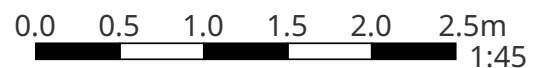


## Laundry Room

Width: 1.55 m  
 Length: 2.87 m  
 Area: 4.05 m<sup>2</sup>  
 Perimeter: 8.84 m



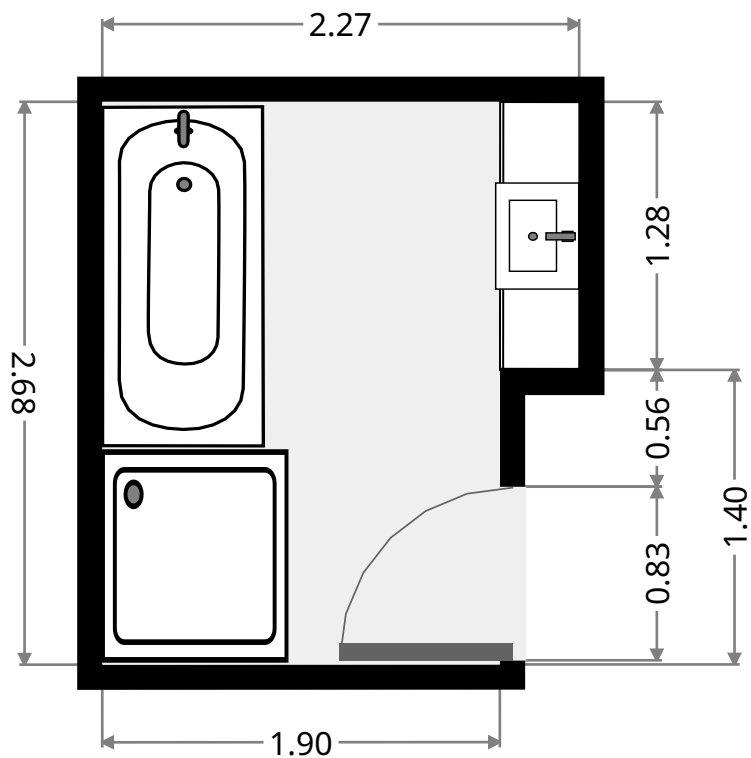
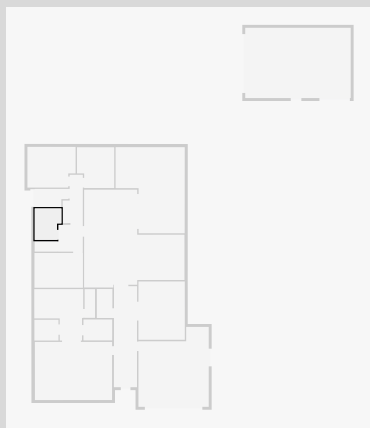
THIS FLOORPLAN IS PROVIDED WITHOUT WARRANTY OF ANY KIND. SENSOPIA DISCLAIMS ANY WARRANTY INCLUDING, WITHOUT LIMITATION, SATISFACTORY QUALITY OR ACCURACY OF DIMENSIONS.



# 11 Argyle Avenue

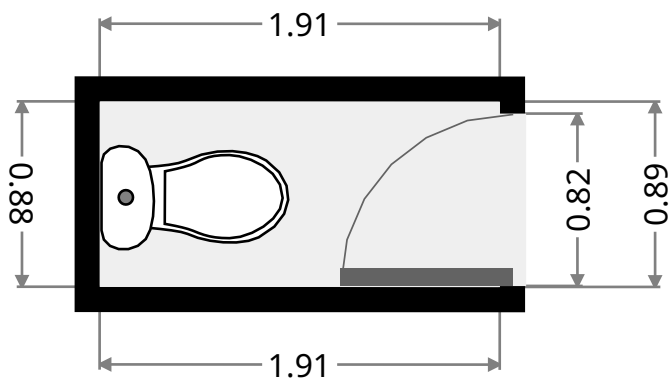
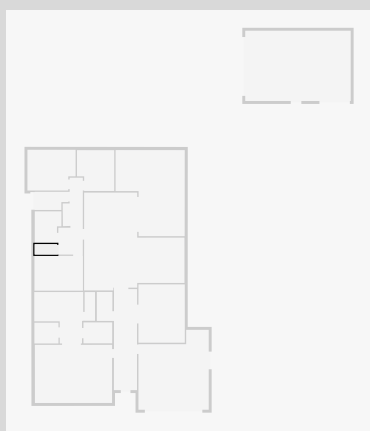
## Bathroom

Width: 2.27 m  
Length: 2.68 m  
Area: 5.56 m<sup>2</sup>  
Perimeter: 9.91 m



## Toilet

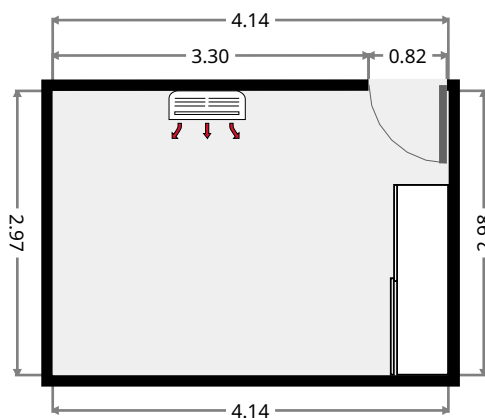
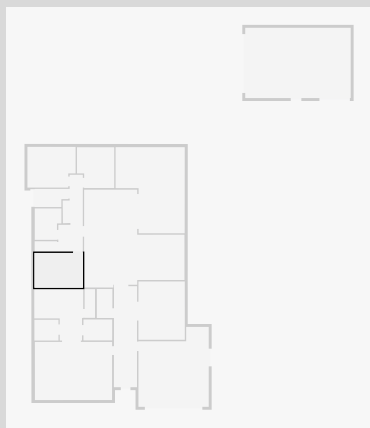
Width: 0.89 m  
Length: 1.91 m  
Area: 1.68 m<sup>2</sup>  
Perimeter: 5.58 m



# 11 Argyle Avenue

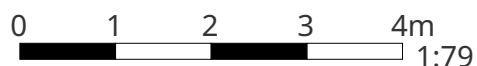
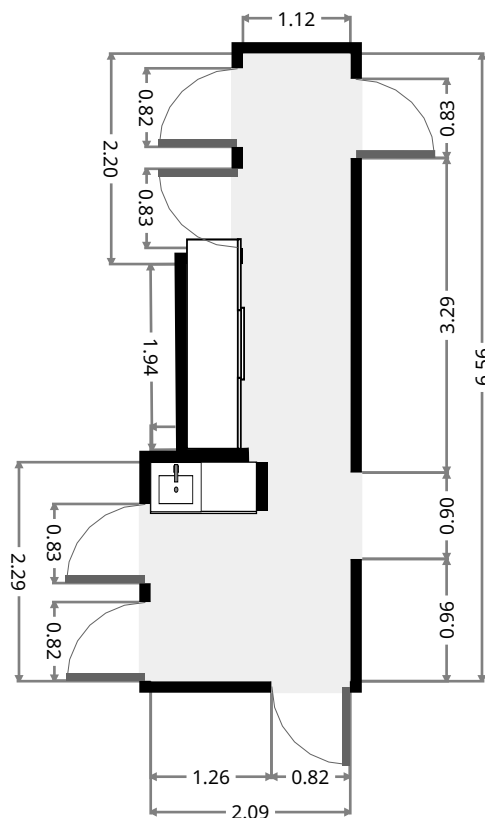
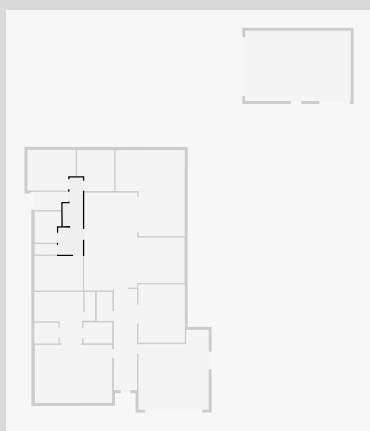
## Bedroom

Width: 2.98 m  
Length: 4.14 m  
Area: 12.29 m<sup>2</sup>  
Perimeter: 14.21 m



## Hall

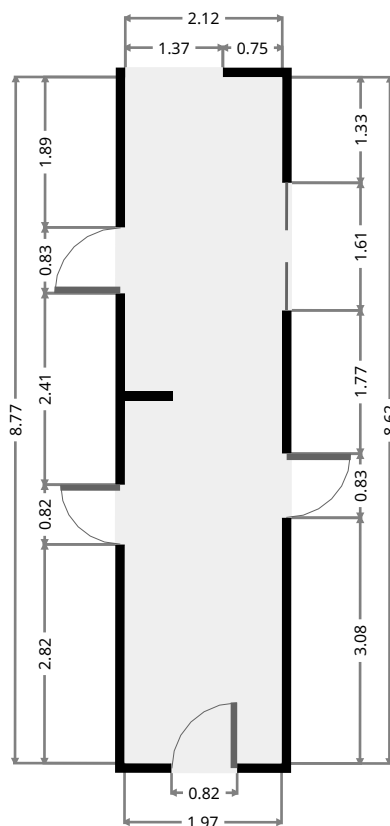
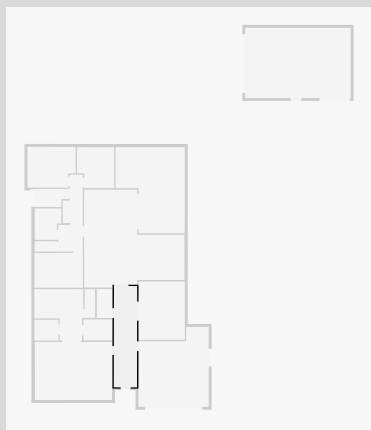
Width: 2.09 m  
Length: 6.56 m  
Area: 10.69 m<sup>2</sup>  
Perimeter: 18.62 m



THIS FLOORPLAN IS PROVIDED WITHOUT WARRANTY OF ANY KIND. SENSOPIA DISCLAIMS ANY WARRANTY INCLUDING, WITHOUT LIMITATION, SATISFACTORY QUALITY OR ACCURACY OF DIMENSIONS.

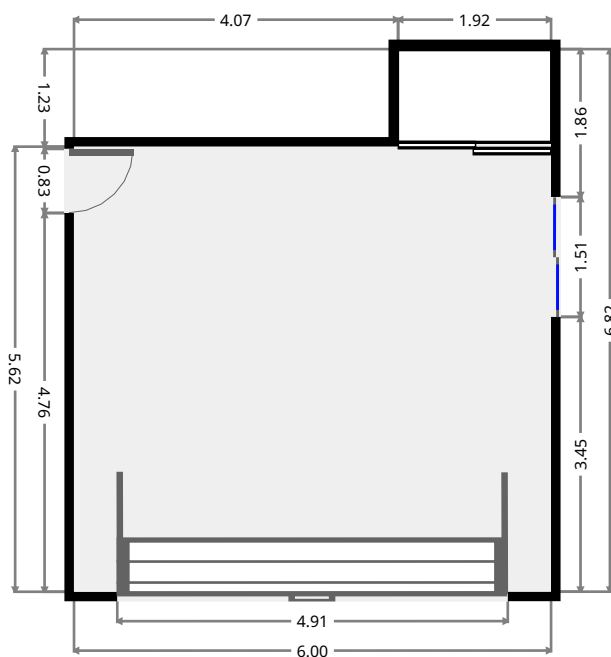
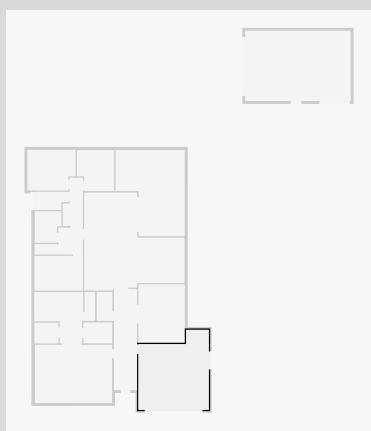
# 11 Argyle Avenue

•  
 Width: 1.97 m  
 Length: 8.63 m  
 Area: 17.02 m<sup>2</sup>  
 Perimeter: 21.20 m



## Garage

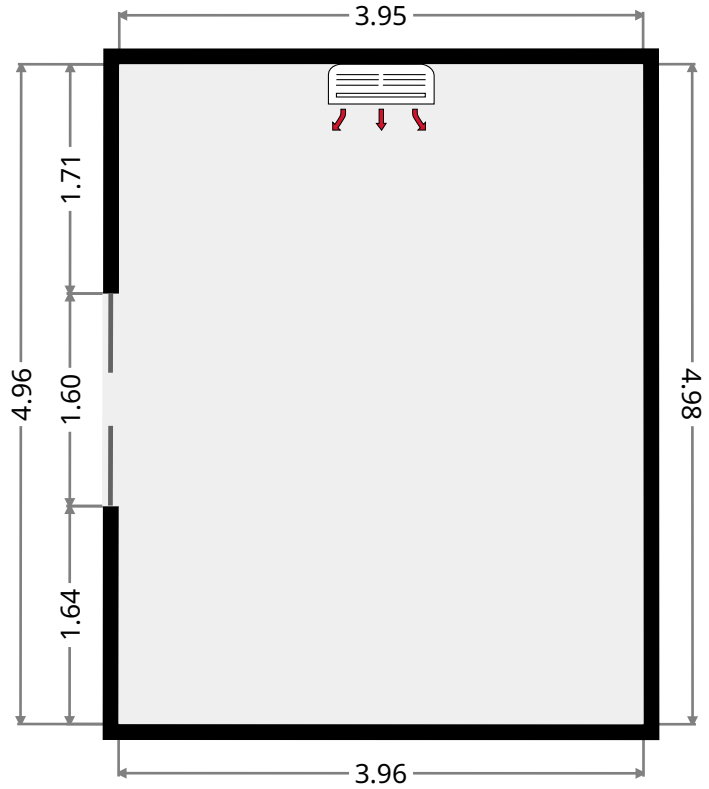
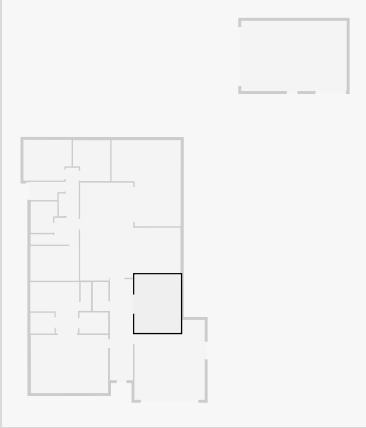
Width: 6.00 m  
 Length: 6.82 m  
 Area: 35.91 m<sup>2</sup>  
 Perimeter: 25.64 m



# 11 Argyle Avenue

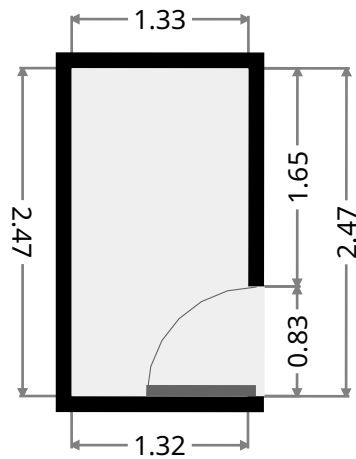
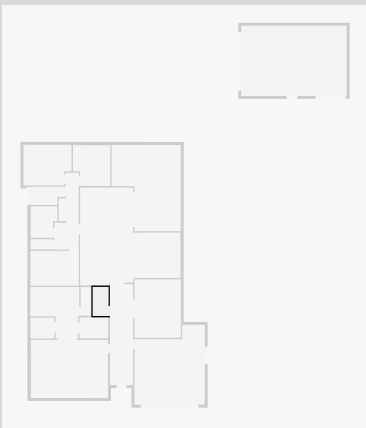
## Media Room

Width: 3.95 m  
Length: 4.98 m  
Area: 19.68 m<sup>2</sup>  
Perimeter: 17.86 m



## Storage

Width: 1.33 m  
Length: 2.47 m  
Area: 3.29 m<sup>2</sup>  
Perimeter: 7.61 m

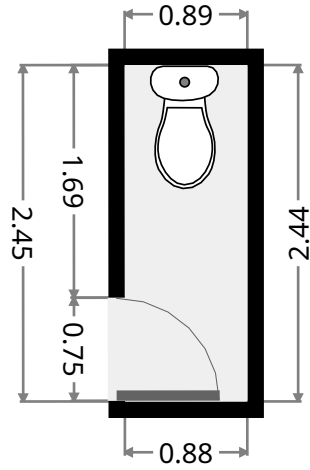
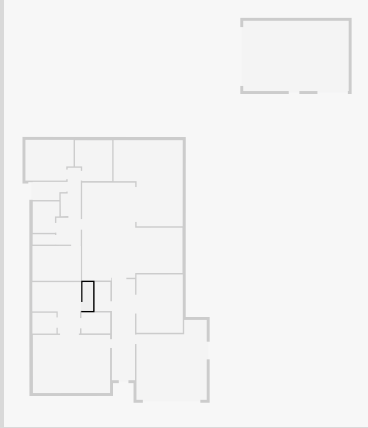




# 11 Argyle Avenue

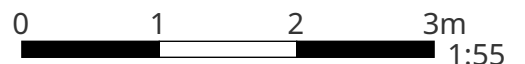
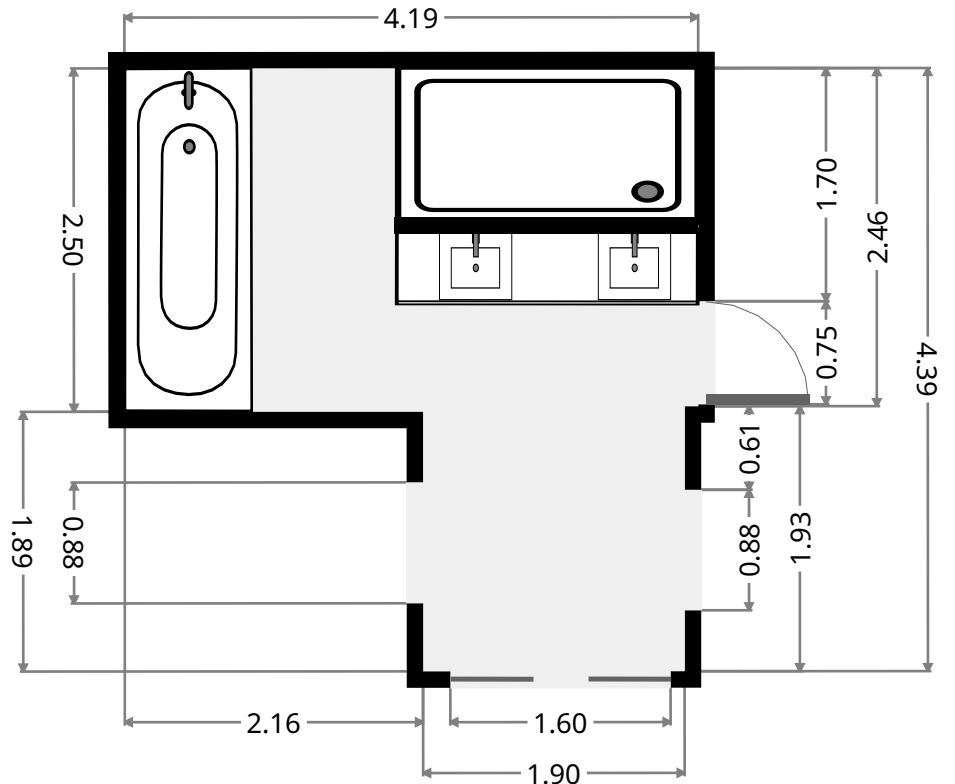
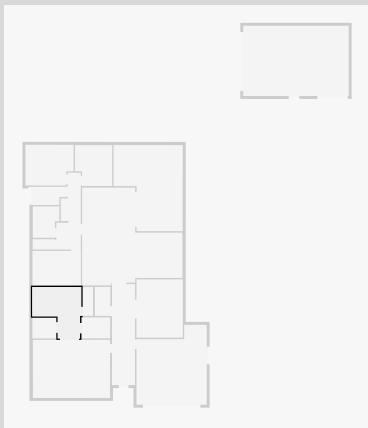
## Toilet

Width: 0.89 m  
 Length: 2.44 m  
 Area: 2.18 m<sup>2</sup>  
 Perimeter: 6.68 m



## Ensuite

Width: 4.19 m  
 Length: 4.39 m  
 Area: 14.02 m<sup>2</sup>  
 Perimeter: 17.12 m

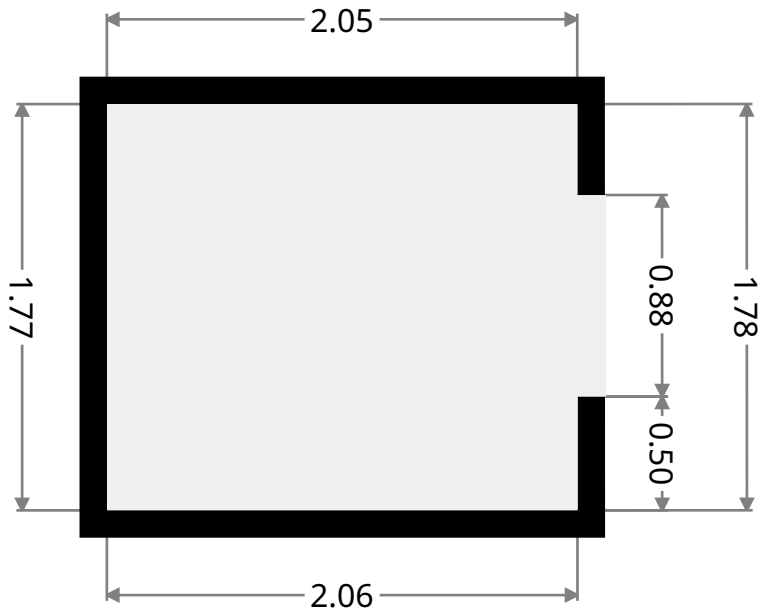
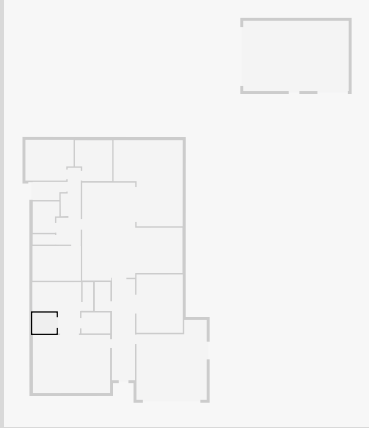


THIS FLOORPLAN IS PROVIDED WITHOUT WARRANTY OF ANY KIND. SENSOPIA DISCLAIMS ANY WARRANTY INCLUDING, WITHOUT LIMITATION, SATISFACTORY QUALITY OR ACCURACY OF DIMENSIONS.

# 11 Argyle Avenue

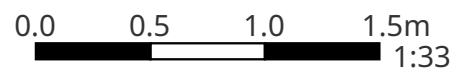
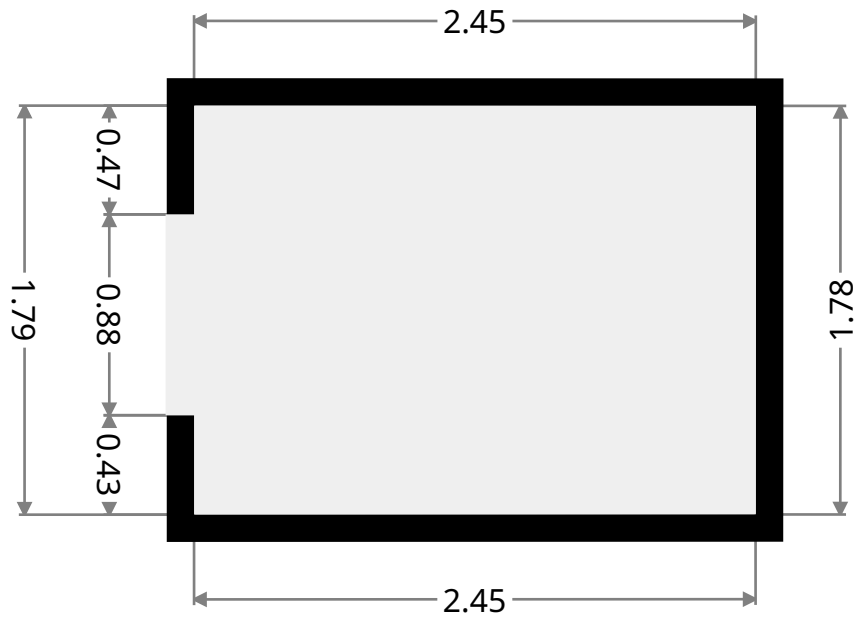
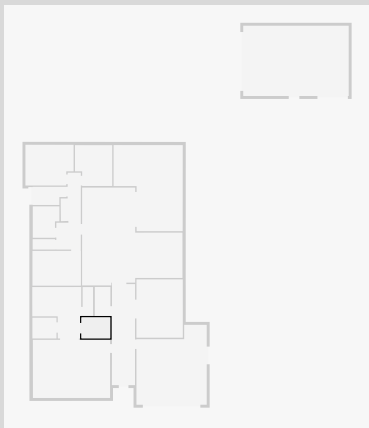
## WIR

Width: 1.78 m  
 Length: 2.05 m  
 Area: 3.64 m<sup>2</sup>  
 Perimeter: 7.66 m



## WIR

Width: 1.78 m  
 Length: 2.45 m  
 Area: 4.38 m<sup>2</sup>  
 Perimeter: 8.48 m



# 11 Argyle Avenue

## Master Bedroom

Width: 4.96 m  
Length: 6.60 m  
Area: 32.70 m<sup>2</sup>  
Perimeter: 23.10 m

